

# Quick Guide

## DIGITAL VIDEO DISC RECORDER & VIDEO CASSETTE RECORDER WITH DIGITAL TUNER ZV457MG9

### Playable Discs

This unit is compatible to play back the following discs / files.

Playable discs	Logos	Playable discs	Logos
DVD-video		CD-DA (audio CD)	
DVD+RW		video CD	
DVD+R		CD-RW	
DVD-RW (Finalized video mode discs only)		CD-R	
DVD-R (Finalized video mode discs only)		<b>Playable files</b>	<b>Media</b>
		CD-DA	CD-RW/-R
		MP3	

is a trademark of DVD Format/Logo Licensing Corporation.

### Region Codes

The number inside the globe refers to region of the world. This unit can playback DVD that are labeled for ALL regions or for Region 1.



### Recordable Discs

This unit can record to DVD+RW, DVD+R, DVD-RW and DVD-R. DVD+R/DVD-R can only be recorded to once. DVD+RW/DVD-RW can be recorded to and erased many times. **DVD-RW/-R will be recorded in the DVD+VR mode automatically in this unit.**

- Following discs are recommended for good recording quality and are proven to be compatible with this unit. However, depending on the media condition the unit may not read the disc properly.

Verbatim	DVD+R 8x, DVD+RW 4x, DVD-R 8x, DVD-RW 2x
JVC	DVD-RW 4x
Maxell	DVD+R 4x/8x/16x, DVD-R 8x/16x
SONY	DVD+R 4x/8x/16x, DVD+RW 4x
TDK	DVD+R 4x/8x/16x

Performance of any other discs are not guaranteed.

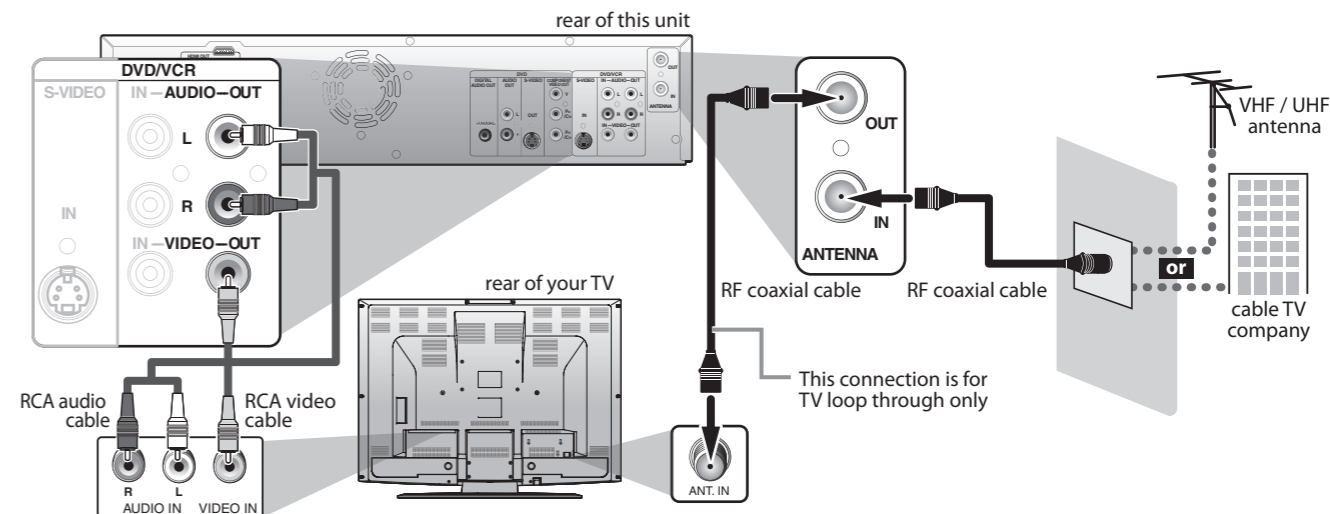
- You can playback DVD+RW on most DVD players without finalizing. However, if you have added or deleted chapters, or made chapters hidden, you must perform "Make Edits Compatible" before being able to see those effects on other units. (Refer to page 80 in the owner's manual.) To playback discs other than DVD+RW on other DVD players, you will need to finalize.

### Unrecordable Discs

- DVD-RW recorded in the mode other than +VR is not recordable on this unit unless you erase all contents in the disc. (Refer to page 79 in the owner's manual.)
- DVD-R recorded in the mode other than +VR is not recordable on this unit.

### Basic Connection

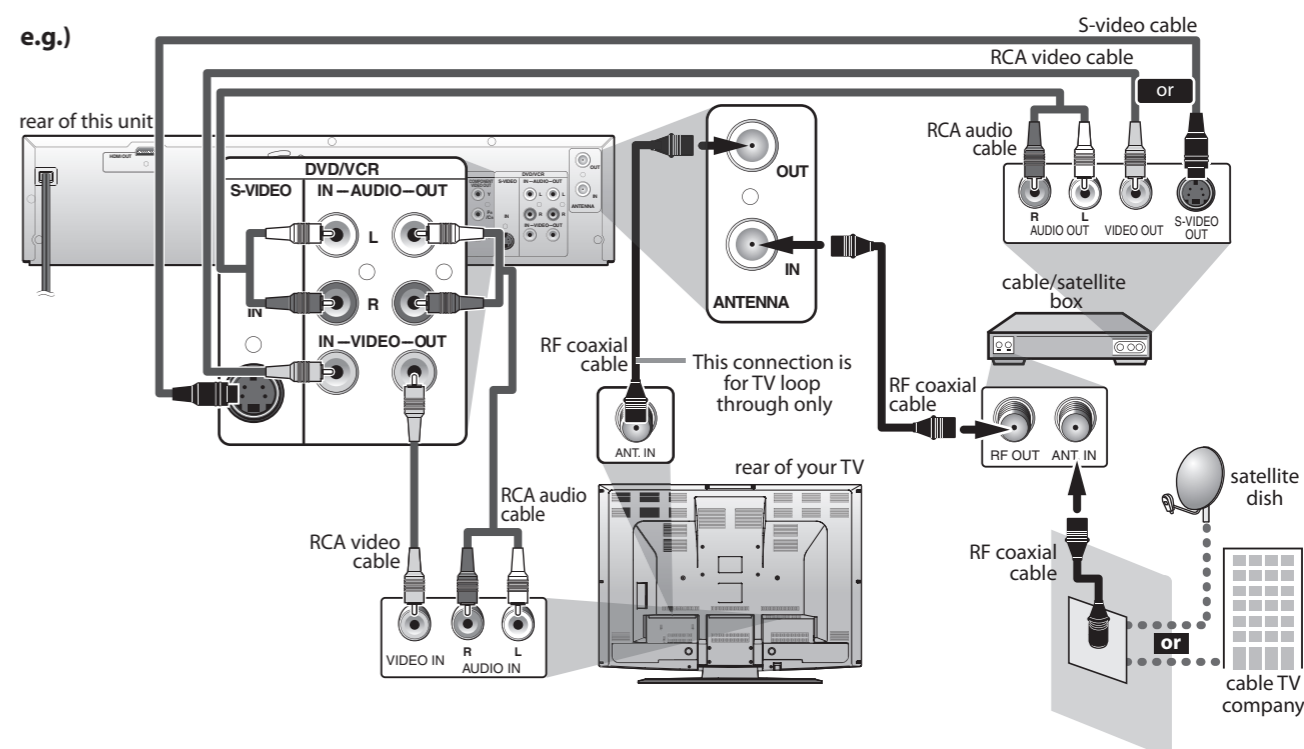
- 1) Disconnect the power cord of your TV from the AC outlet.
- 2) Make the basic connection as illustrated below.



- 3) Plug in the power cords of the devices to the AC outlet.

### Connection to a Cable / Satellite Box

- 1) Disconnect the power cords of the devices from the AC outlet.
- 2) Make the connection as illustrated below.



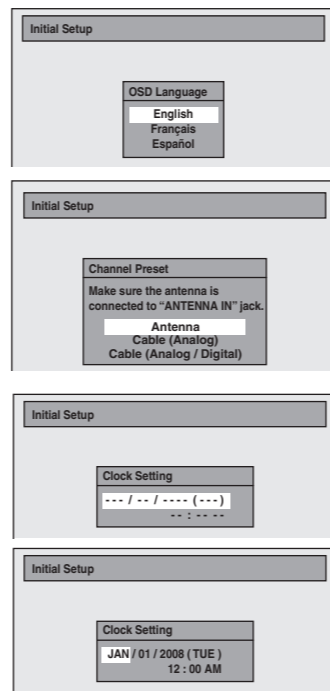
- 3) Plug in the power cords of the devices to the AC outlet.

# Initial Setting

You need to follow these steps when you turn on this unit for the first time.



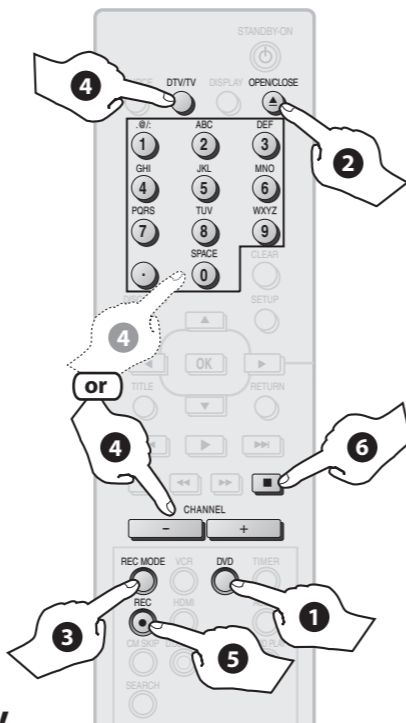
- 1 Press [STANDBY-ON ○].**  
Turn on your TV. Locate the Video/Input button on the TV's remote control that accesses the external Input Channel. Press until you see the "Initial Setup" menu on the screen.
- 2 Use [▲ / ▼] to select your desired language, then press [OK] to set language.**
- 3 Use [▲ / ▼] to select the type of broadcasting signal, then press [OK].**  
The unit will start getting channels available in your area.
- 4 Press [OK] to activate "Clock Setting".**
- 5 Use [◀/▶] to select an item to set, and use [▲ / ▼] to select the contents to suit your preference, then press [OK].**



# DVD Recording

## 3-1 Basic Recording

- 1 Press [DVD].**
  - 2 Press [OPEN/CLOSE ▲] to open the disc tray. Place the disc properly. Press [OPEN/CLOSE ▲] again to close the disc tray.**  
*\* Make sure the disc is compatible with this unit. (Refer to page 38 in the owner's manual for the list of compatible discs.)*
  - 3 Press [REC MODE] to select a recording mode.**
- | Recording mode | Recording time |           | Video/sound quality    |
|----------------|----------------|-----------|------------------------|
|                | 8cm Disc       | 12cm Disc |                        |
| HQ (1Hr)       | 18 min         | 60 min    | Good<br>↑<br>↓<br>Poor |
| SP (2Hr)       | 36 min         | 120 min   |                        |
| SPP (2.5Hr)    | 45 min         | 150 min   |                        |
| LP (3Hr)       | 54 min         | 180 min   |                        |
| EP (4Hr)       | 72 min         | 240 min   |                        |
| SLP (6Hr)      | 108 min        | 360 min   |                        |
- 4 Press [DTV/TV] to select analog TV or digital TV, then use [CHANNEL + / -] or [the Number buttons] and [•] (for digital TV channels) to select a desired channel to record.**

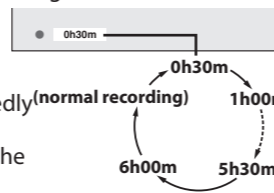


- 5 Press [REC ●] to start recording.**
- 6 Press [STOP ■] to stop recording.**

### To set one-touch timer recording (OTR)...

This is a simple way to set the recording time in blocks of 30 minutes. Press [REC ●] repeatedly until the desired recording time (30 minutes to 6 hours) appears on the TV screen. One-touch timer recording will start.

- To change the recording length during one-touch timer recording, press [REC ●] repeatedly until the desired length appears.
- To cancel one-touch timer recording within the specified time, press [STOP ■].



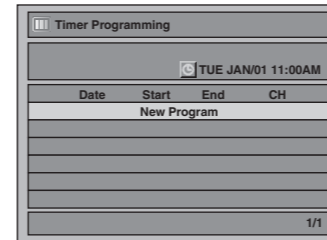
## 3-2 Timer Recording

You can program the unit to record up to 12 programs within a month in advance. Daily or weekly program recordings are also available.

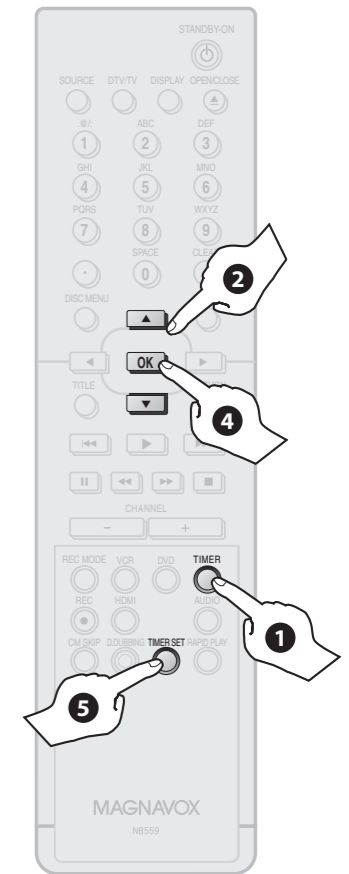
### Before recording, make sure

- Set the clock before setting a timer programming.
- Insert a recordable disc with enough recordable space or a cassette tape with an erase-protection tab.

- 1 Press [TIMER].**
- 2 Use [▲ / ▼] to select "New Program", then press [OK].**



- 3 Set a timer programming.**
- 4 Press [OK].**
- 5 Press [TIMER SET] to set a timer programming.**  
⌚ will appear on the front panel display.



Set the date.	Set start and end time.	Select a desired input mode and channel to record. (*)	Select a recording media ("DVD" or "VCR").	Select a recording mode.

(\*) Refer to "How to select a channel number for the timer recording" on page 44 in the owner's manual for more details.

# DVD Playback

- 1 Press [DVD].**
- 2 Open the disc tray, and insert a disc.**
- 3 Close the disc tray.**
- 4 Start playing back.**
- 5 Stop playing back.**

