

PHILIPS

Xperion 6000 Pocket

LED work lights



User manual



Before you start

Thank you for buying the Philips LED work lights. Its high-quality LED lighting offers a powerful wide-angle light output that will let you work in your workshop, garage or any other professional environment under the best lighting conditions.



The Philips LED work lights bears the official Philips Automotive Grade Quality seal. Philips Automotive Grade Quality products are designed and developed following strict quality-control processes (including applicable ISO norms), leading to consistently high production standards.

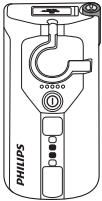


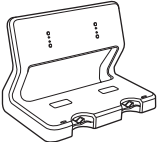

Important

Please read this user guide carefully before using your LED work lights. This guide contains important health and safety information.

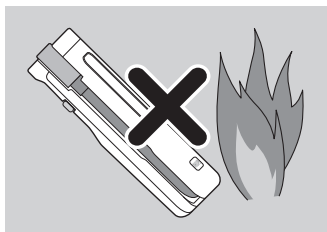
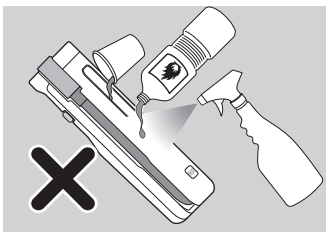
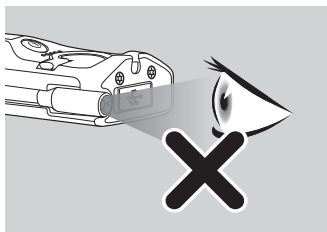
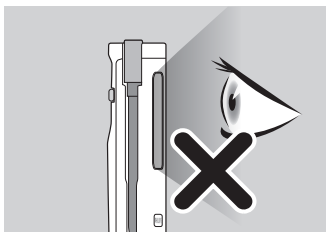
If you need further assistance, **please visit us:**
www.philips.com/support
Or visit your local Philips Dealer
For more information visit
www.philips.com/xperion-6000

1



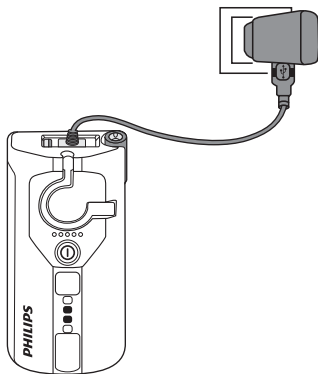
	✓		✓
	✓		✗
	✓		



3**i****CE****UK
CA**

4

With Type C USB

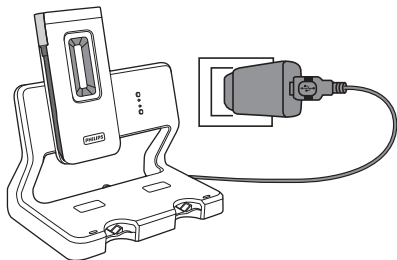


3.5h



100%

With Philips Multi Dock Station

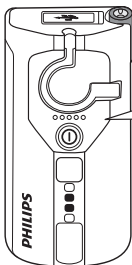


3.5h



100%

4



○○○○○



81-100%

61-80%

41-60%

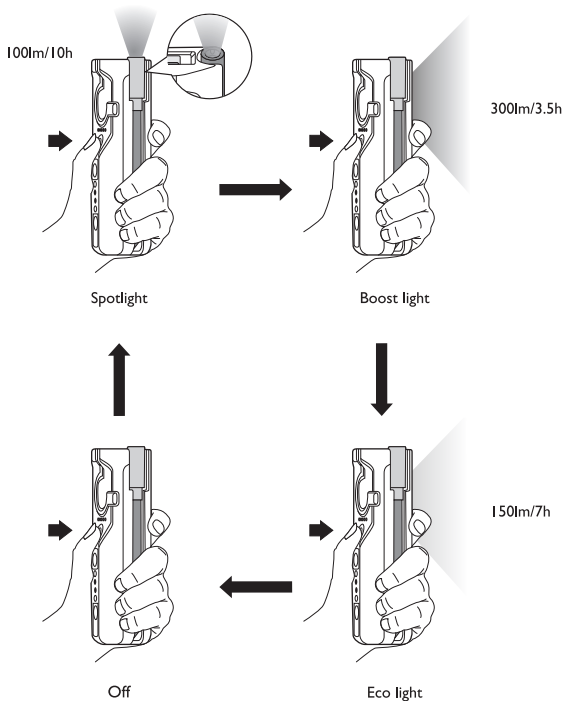
21-40%

11-20%

<10%



<10%





Description

	Light output-lm @25°C, 60RH	100lm/150lm/300lm(Spot/Eco/Boost)
	Operation time(up to)-h @25°C, 60RH	10h/7h/3.5h(Spot/Eco/Boost)
	Battery	Rechargeble battery 3,7V 2000mAh
	Charging (Via type C USB)	5V 1A
	Charging (Via Multi Dock Station)	5V 1A
	Charging time(up to)-h @25°C, 60RH	3.5h
	IK	IK07
	IP	IP65
	Operating temperature	-10°C to 40°C
	Storage temperature	-20°C to 50°C
	lamp dimension(L*W*H)-mm	65x34x140
	Product weight	324g
	Magnet	Yes

8



3 years warranty*

* 2+1 extended warranty, details at: www.philips.com/auto-warranty

Name: _____

Address: _____

Phone number: _____

Product name: _____

Purchasing date: _____



Lumileds is the warrantor of this product.
2021 © Lumileds Holding B.V. All rights reserved.
Philips and the Philips Shield Emblem are registered
trademarks of Koninklijke Philips N.V.
and are used under license.

3211 008 24601