

*(The model number in all attached pictures is only an example)*

## **1. Introduction**

The version of this software is **ver1.13**

---

## **2. Key Features added in this software version**

Initial release

---

## **3. Software Version Verification Procedure**

**It is important to write down the system version information of your Music Center before you start the upgrade procedure. This information is also useful in case you need to call Philips Customer Care Center.**

1. Press **MENU**.
  2. Press **▲/▼** to select “**Information**”. Press **OK**.
  3. Press **▲/▼** to select “**System**”. Press **OK**.
  4. The software version number is shown on the display.
  5. If the software version is not the latest one, you need to upgrade waCS7500.
-

#### **4. How to upgrade waCS7500**

There are 2 ways to update the embedded CDDB.

##### **A) Using CD-Rom**

##### **B) Using WADM**

---

## **A. Using CD-Rom**

### **I. Software Upgrade Disc Preparation**

#### **Tools Required**

You will need the following items:

- PC (Pentium III 300MHz processor or higher)
- CD-R/RW writer and writing application software
- Blank CD-R or CDRW disc
- Broadband / High speed internet connection

### **II. How to download the software to your computer**

1. Visit Philips supporting web site <http://www.philips.com/support> to download the software.
2. Unzip the .zip file and extract files into your PC.

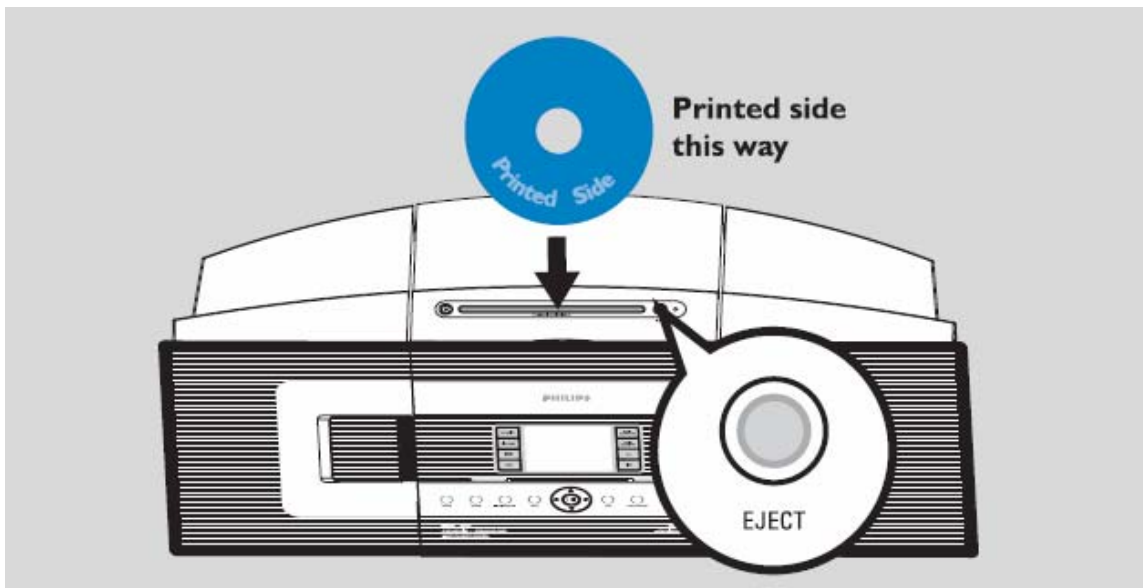
**Note: DO NOT rename the filename!**

**If you do not have the software to open the .zip file, please visit below website to download the software.**

<http://www.winzip.com/>

### **III. Steps to upgrade the waCS7500**

1. Make sure the Music Station has connected to the Music Center.
2. Burn the file to blank CD-R or CDRW. Finalize the disc. (The application may do this automatically.)
3. Turn on the Music Center and turn off the Music Station, insert the CD to the slot loader, CD graphic printed side facing you.



4. The Music Center will upgrade automatically.

**Note: DO NOT power off the Music Center at this stage.**

5. It will take several minutes to complete the firmware upgrade for the Music Center.
6. When done, the Music Center will go to the HD mode automatically. Turn on the Music Station (paired earlier), the Music Center will upgrade the Station wireless automatically.
7. It takes several minutes to complete the firmware upgrade for the Music Station.

**Note: Do NOT power off the Music Station at this stage.**

8. When done, the Music Station will go to the HD mode. You can start the normal operations afterward.

#### **IV. After the upgrade**

Do confirm the software version by checking the system version.

Please follow the procedure described in the section “**Software Version Verification Procedures**”.

---

## **B. Using WADM**

### **I. How to download the software to your computer**

1. Visit Philips supporting web site <http://www.philips.com/support> to download the software.
2. Unzip the .zip file and extract files into your PC.

**Note: DO NOT rename the filename**

**If you do not have the software to open the .zip file, please visit below website to download the software.**

<http://www.winzip.com/>

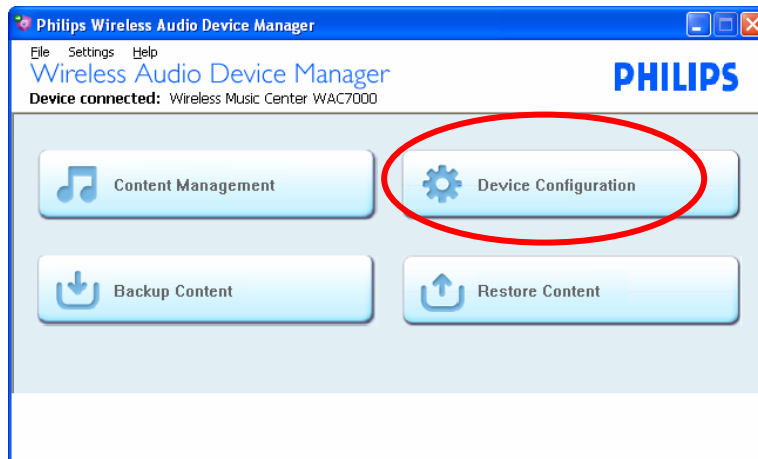
## II. Steps to upgrade waCS7500

**Option 1:** Build the connection by selecting “*Connect Now*”.

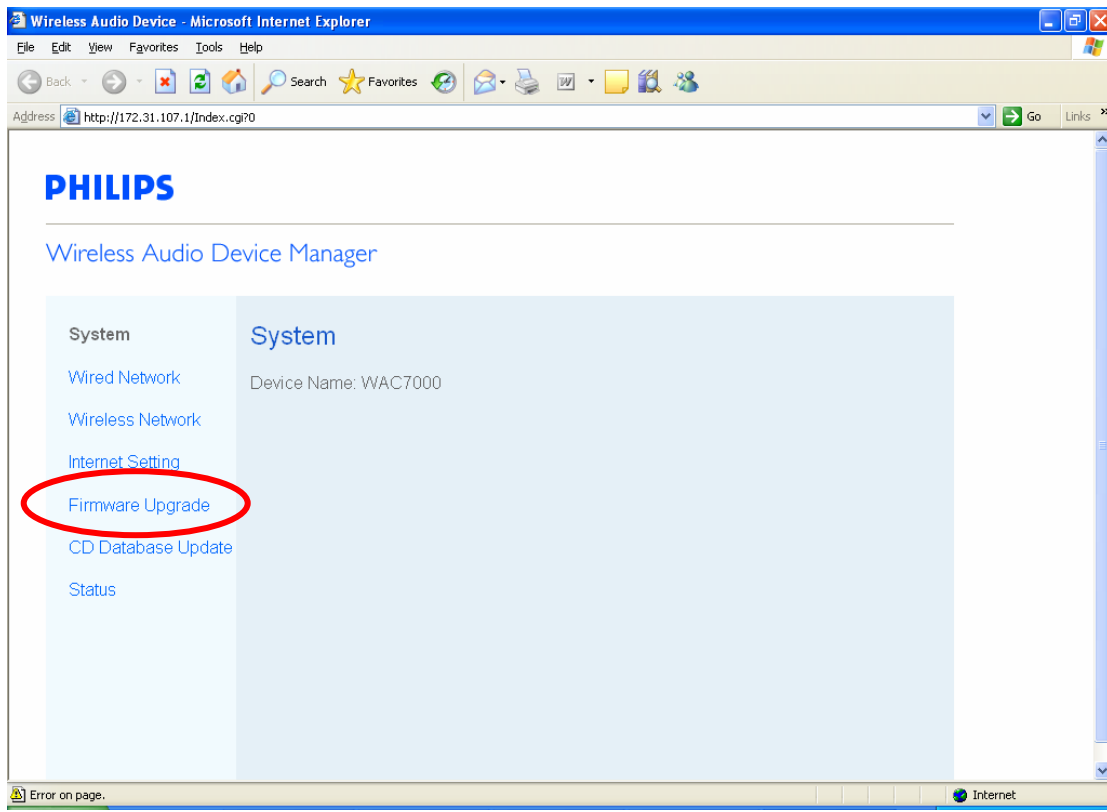
1. Connect the Center with the computer by using the supplied Ethernet cable.
2. Power on the Music Center. (Power off the Music Station at the same time)
3. Launch WADM. The display will show the below message. Click “*Connect Now*”.



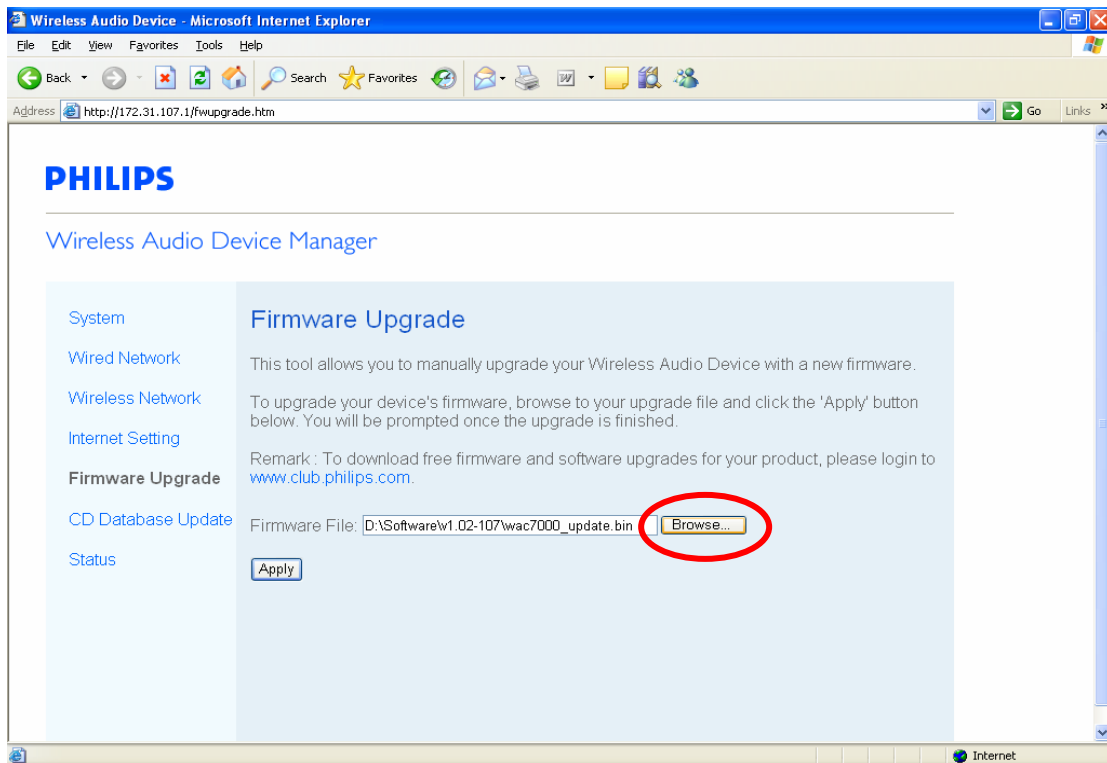
4. Select “*Device configuration*”



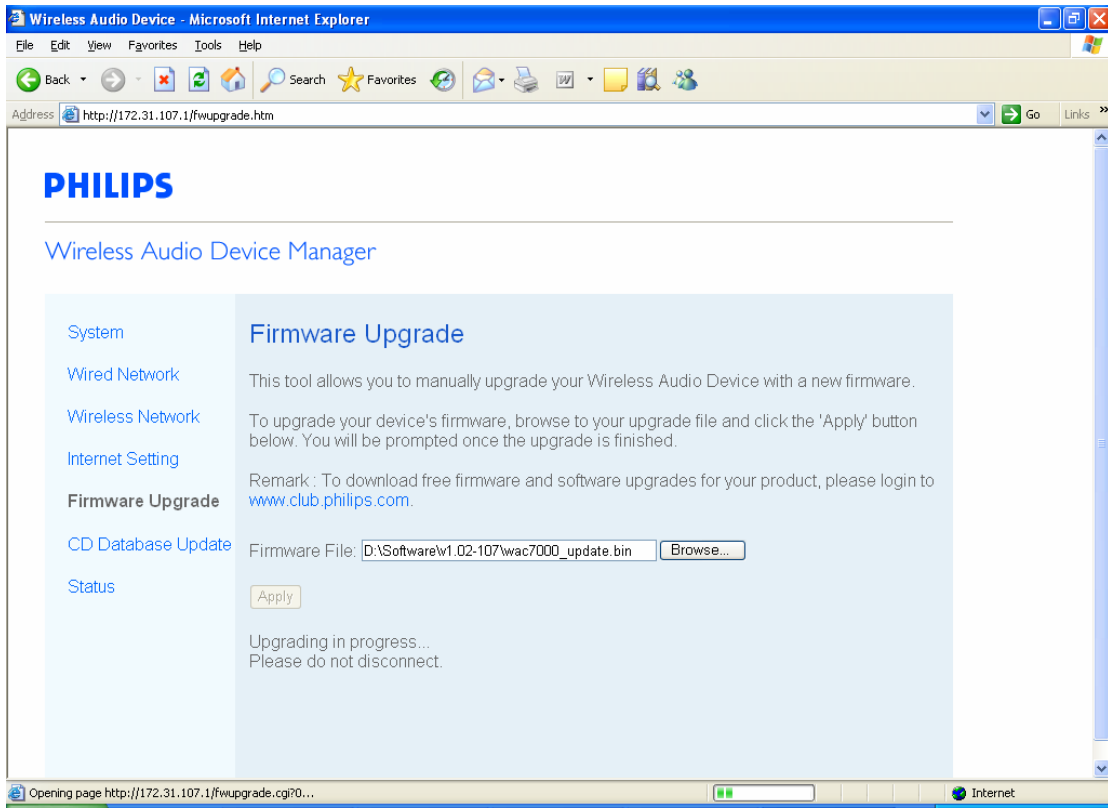
5. Select “*Firmware Upgrade*”



6. Select the .bin file by clicking “*Browse*”, and then press “*Apply*”.

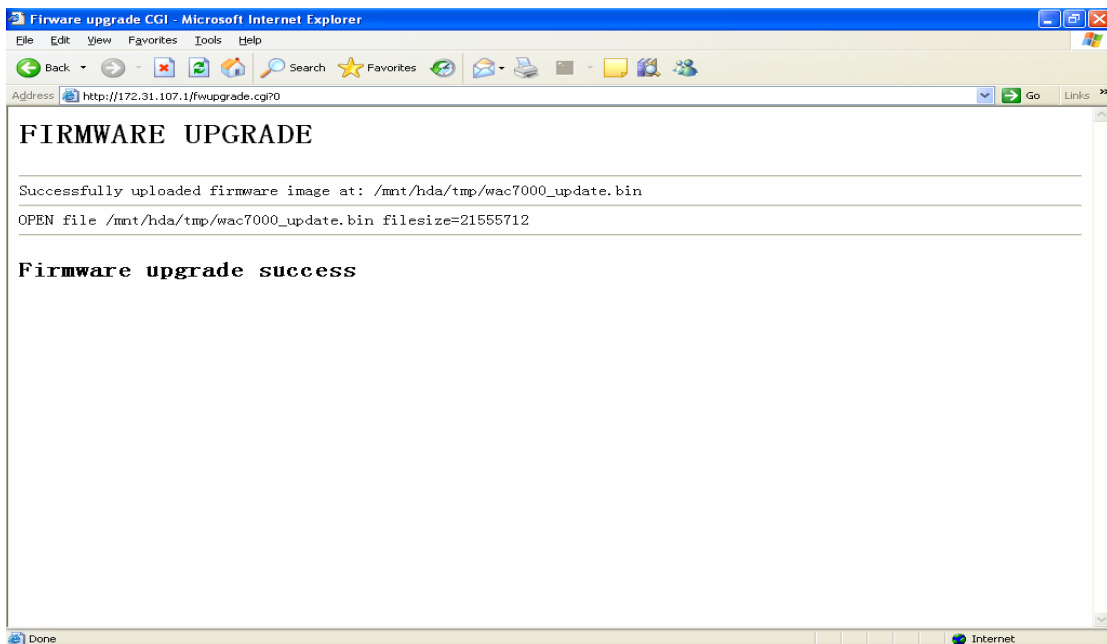


7. The .bin file starts being transferred to the Music Center.



**Note: DO NOT power off the Music Center & disconnect the Music Station from the computer.**

8. After the .bin file is transferred to the Music Center successfully, the Music Center starts upgrading the Music Center automatically.





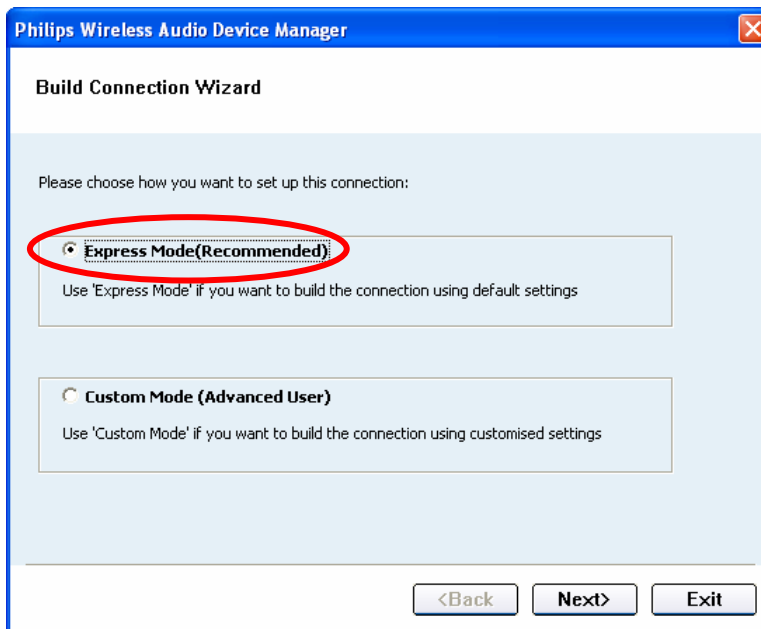
9. Power on the Music Station, the Music Center will upgrade the Station wireless automatically.

**Option 2:** Build the connection by selecting “*Connection Wizard*”.

1. Connect the Center with the computer by using the supplied Ethernet cable.
2. Power on the Music Center. (Power off the Music Station at the same time)
3. Launch WADM. The display will show the below message. Click “*Connection Wizard*”.

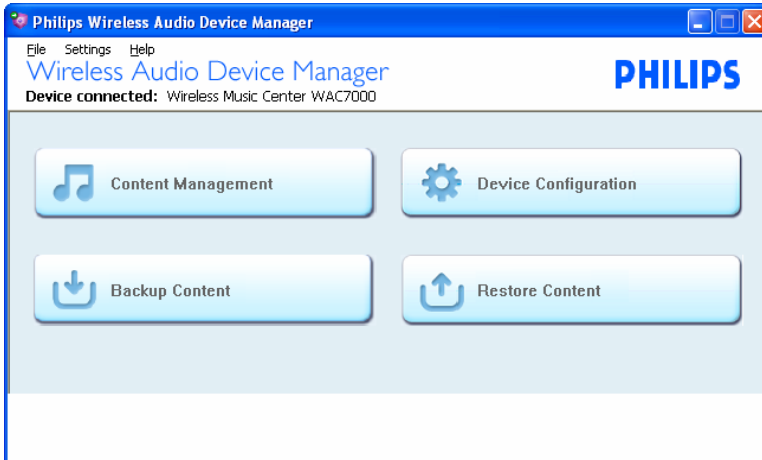


4. Select “*Express Mode*” (Recommended), and then click “*Next>*”.



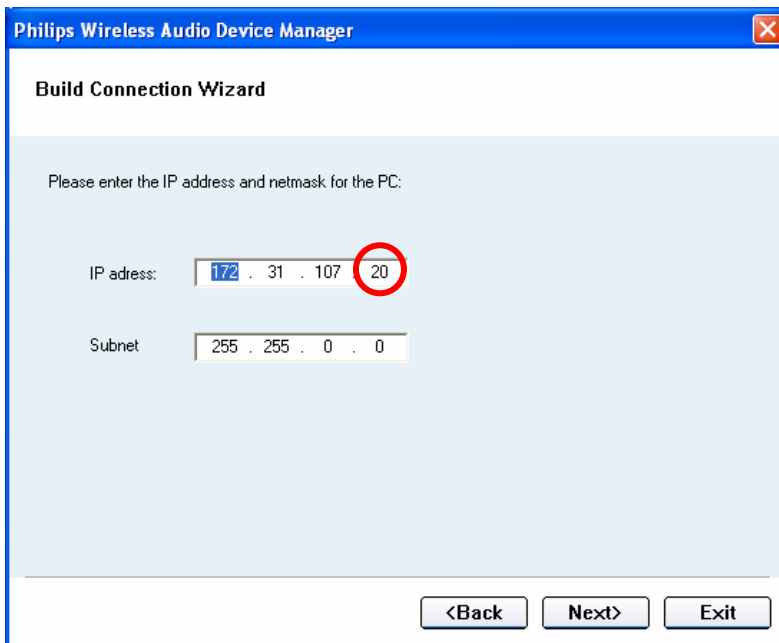
[How to build the connection by selecting “\*Custom Mode \(Advanced User\)\*”?](#)

5. Click “**Next>**” as the computer display prompts until the below picture appears.



6. Repeat the above [step 4-9](#) to finish building the connection.

If “**Custom Mode**” is selected at [step 4](#). The below picture will appear on the display.



Use the numeric keys on the remote controller to change IP address to be consistent with the Music Center with the highlighted digits different from the Music Center.

Click “**Next>**” then “**Finish**” as the display prompts.

Repeat [Step 4-9](#) to finish building the connection.

## **After the upgrade**

Do confirm the software version by checking the system version.

Follow the procedure described in the section “[Software Version Verification Procedures](#)”.

---

## **5. Software History**

Version Number	Advantage	Remark
Ver1.13	Initial release	