

## **1. Introduction**

The Firmware Upgrade will upgrade WAC5 & WACS5's firmware to **Version 1.2.10**.

---

## **2. Key features added**

The software release **1.2.10** has provided a solution for CD ejection problem that has happened on a marginal number of CDs.

---

## **3. Preparation**

### **i) Verifying firmware version**

Before upgrading, check the firmware version.

1. Turn on your WAC5 Center
2. Press **MENU**.
3. Press **▲/▼** to select "**Information**". Press **OK**.
4. Press **▲/▼** to select "**System**". Press **OK**.
  - The display shows the FW (firmware) version number
  - Upgrading is necessary if the FW version is an earlier one

***Note:** The firmware information is also useful when you call Philips Customer Care Center.*

### **ii) Checking Wi-Fi connection**

#### **Wi-Fi connection between Center and Station:**

- Check you have pressed **STANDBY-ON** to turn on WAC5 Center and WAS5 Station
- On Station, check you can playback tracks in **HD** mode
- On Station, check the signal indication shows maximum reception

**Wi-Fi connection with the Wireless router/Access Point (if applicable):**

- Check the Wireless router/Access Point is working if your Center is connected to PC via a Wireless router/Access Point
- 

**4. Upgrading**

You can upgrade the embedded firmware in 2 ways

- A) [Upgrading from CD-ROM](#)
  - B) [Upgrading from PC](#)
- 

**A) Upgrading from CD-ROM**

**i) Prepare an upgrading CD**

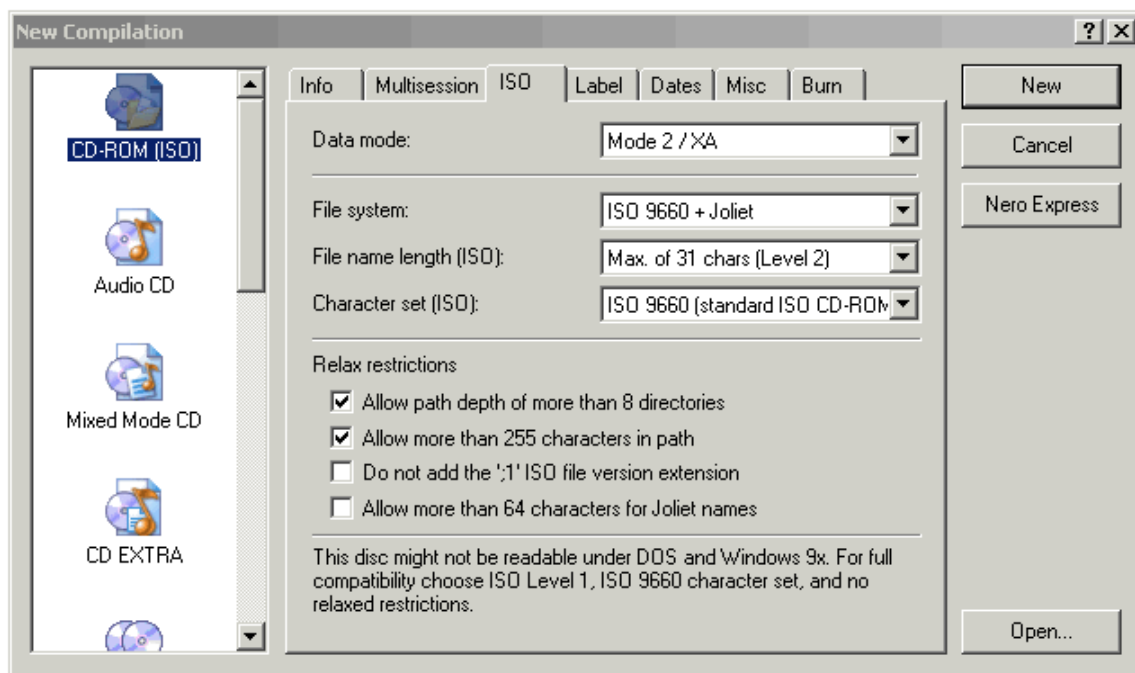
1. Check you have the following tools:
  - PC (Pentium III 300MHz processor or higher)
  - CD-R/RW writer and writing application software
  - Blank CD-R or CD-RW disc
  - Internet access (broadband or high speed)
2. Click the link to download Firmware Upgrade to your PC



3. Unzip the .zip file  
(*Note:* - **Do not rename the filename.**  
- Visit <http://www.winzip.com/> for downloads if you can not open the .zip file. )

4. Write the extracted files – not the zip file – onto a blank CD-R or CD-RW disc, using the following settings:
  - File System CD-ROM Joliet
  - File name length : max 31 chars (ISO Level 2)
  - Mode : 2/XA
  - Character set : ASCII
  - Single session Write Speed : Low
  - Finalized the disc. (The application may do this automatically.)

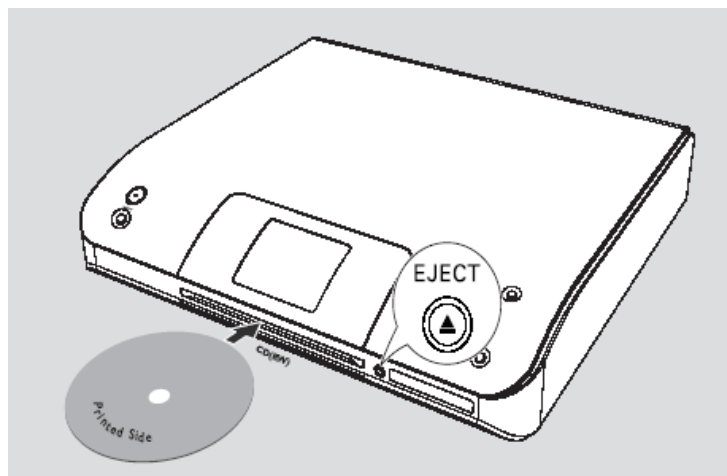
*(Note: Make sure you finalize the CD)*



## ii) Upgrade WACS5

### *Upgrade WAC5 Center:*

1. Check WAC5 Center is on and WAS5 Station is off
2. On Center, insert the upgrading CD into the CD slot loader, with CD graphic printed side facing you



- Upgrading starts automatically
  - The display shows “**Updating firmware, please wait.....**” .  
A progress bar appears
  - Center will reboot itself twice during the upgrading process
  - After about 5 minutes, Center returns to HD mode. The upgrading is completed
- (Note: - Keep your Center turned on during the upgrading.)*

#### ***Upgrade WAS5 Station:***

3. Press **STANDBY-ON** to turn WAS5 Station
    - Upgrading starts automatically
    - The display shows “**Updating firmware, please wait.....**” .  
A progress bar appears
    - Station will reboot itself twice during the upgrading process
    - After about 5 minutes, Station returns to HD mode. The upgrading is completed
- (Note: - Keep your Station turned on during the upgrading.)*

#### ***Helpful hints:***

- To check the firmware version, see ***Preparation: Verifying firmware version.***
- If you have any problem, see [troubleshooting](#).

## B) Upgrading from PC

### i) Download Firmware Upgrade to your PC

1. Click the link to download Firmware Upgrade to your PC

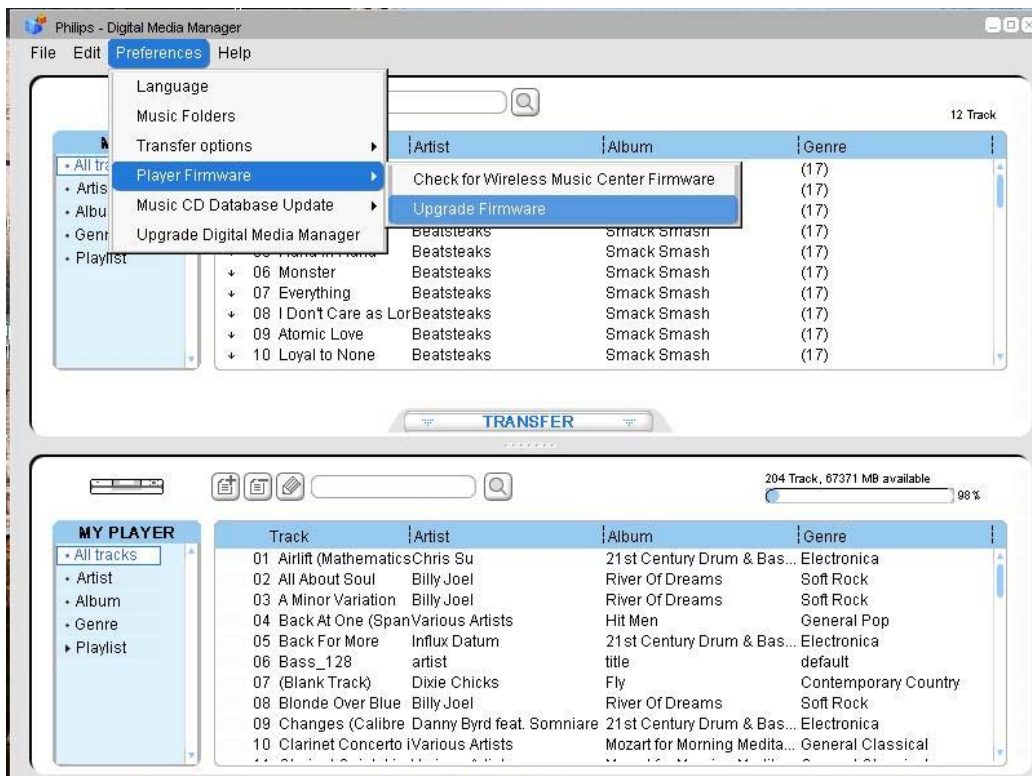


2. Unzip the .zip file  
(*Note:* - Do not rename the filename.  
- Visit <http://www.winzip.com/> for downloads if you can not open the .zip file. )

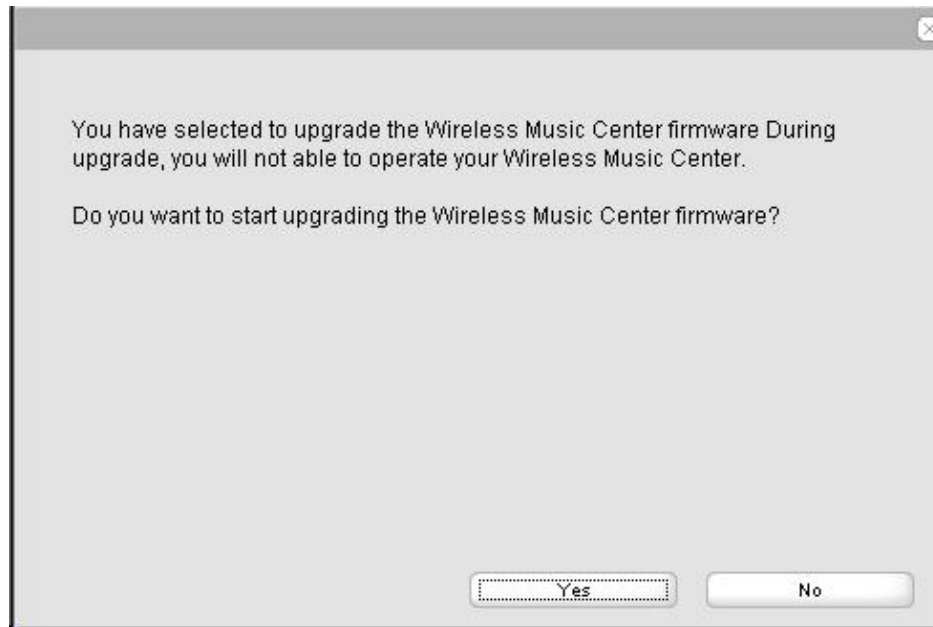
### ii) Upgrade WACS5

#### *Upgrade WAC5 Center:*

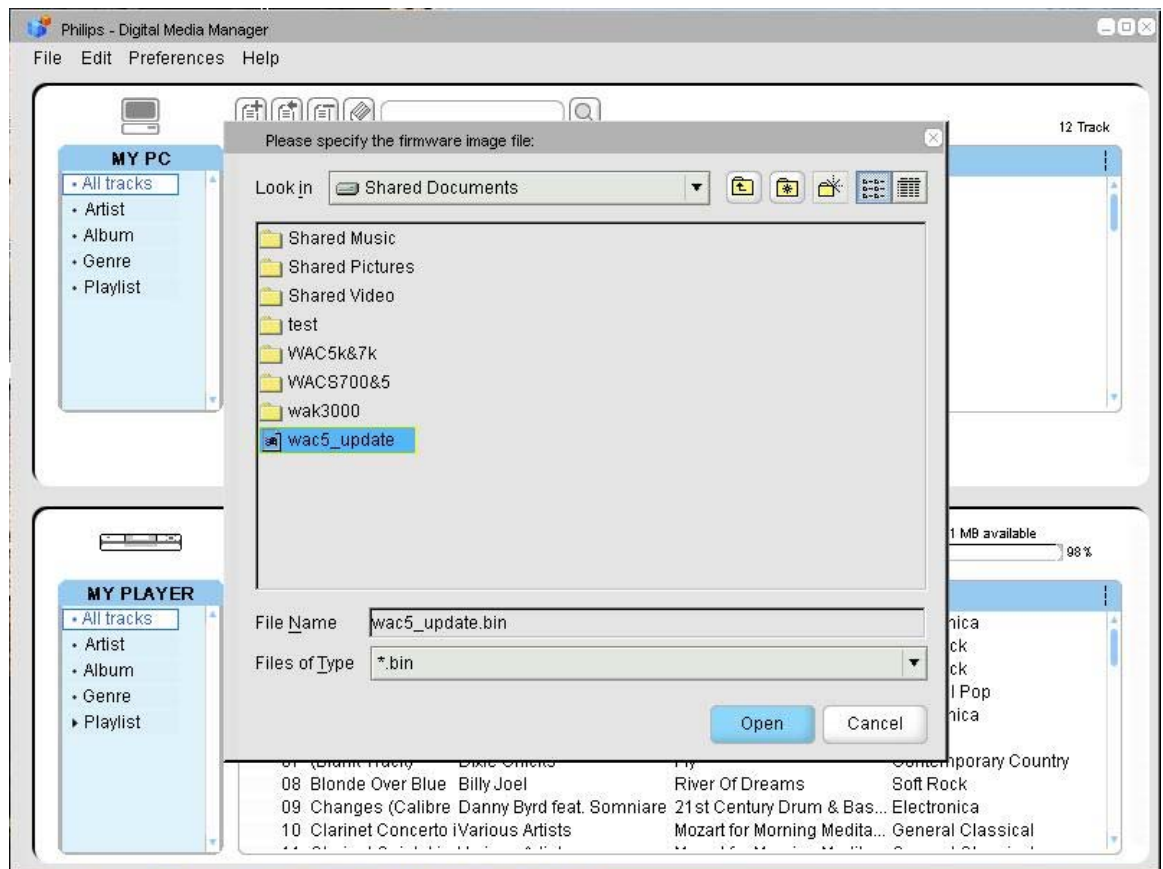
1. Connect your PC and WAC5 Center using the supplied Ethernet cable
2. Launch the Digital Media Manager (DMM) on your PC
3. Select **Preference** → **Player Firmware** → **Upgrade Firmware**



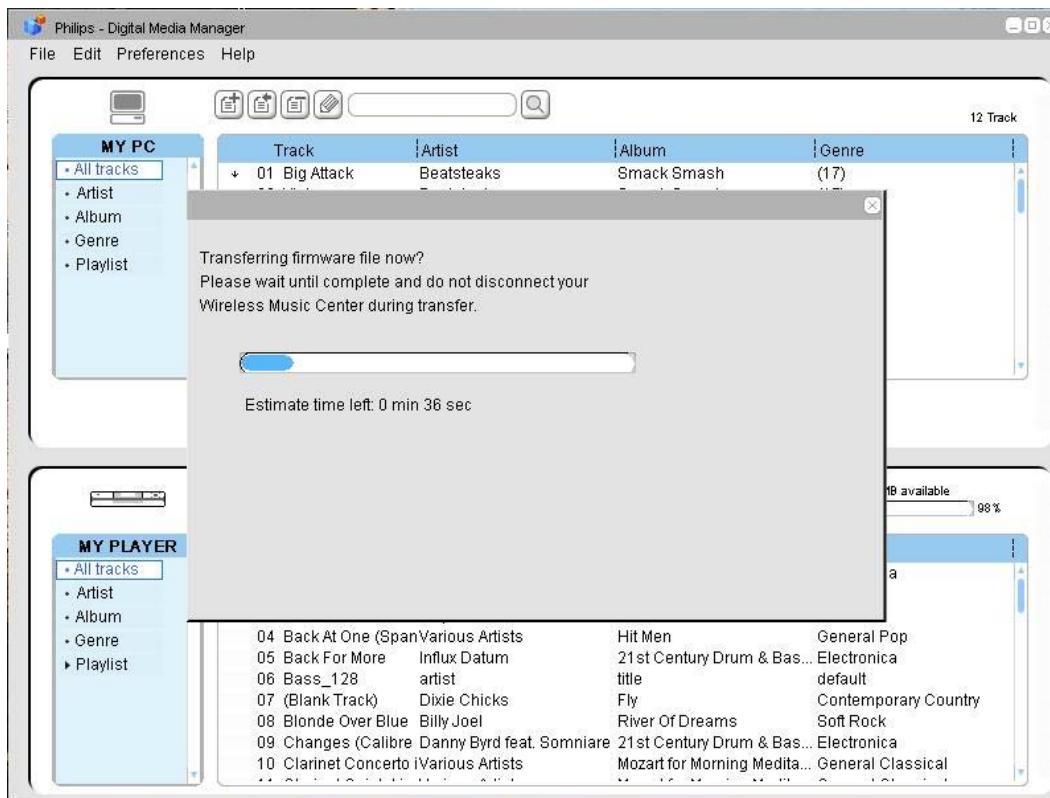
4. Click **Yes** to start upgrading



5. Find the Firmware Upgrade file you stored in the PC. Click **Open**



→ You will start transferring the file to WAC5 Center



→ After file transferring is finished, upgrading starts automatically on WAC5 Center



- The Center's display shows "Updating firmware, please wait.....". A progress bar appears
  - Center will reboot itself twice during the upgrading process
  - After about 5 minutes, Center returns to HD mode. The upgrading is completed
- (Note: - Keep your Center turned on during the upgrading.)

### ***Upgrade WAS5 Station:***

6. Press **STANDBY-ON** to turn on WAS5 Station
  - Upgrading starts automatically
  - The display shows “**Updating firmware, please wait.....**” .  
A progress bar appears
  - Station will reboot itself twice during the upgrading process
  - After about 5 minutes, Station returns to HD mode. The upgrading is completed

(*Note:* - Keep your Station turned on during the upgrading.)

### ***Helpful hints:***

- To check the firmware version, see ***Preparation: Verifying firmware version.***
  - If you have any problem, see [troubleshooting](#).
- 

## **5. Troubleshooting**

If the Station’s display shows: "***Firmware is damaged, restoring a new copy ...***" or "***Center is connected, retrieving firmware***"

Follow the DON’T below:

- a. **DON’T restore Center’s setting** (Don’t select "Menu" → "Setting" → "Restore Setting" on Center)
- b. **DON’T delete Stations** from Center (Don’t select "Menu" → "Station Mgmt" → "Delete Station" on Center)
- c. **Do NOT change Center’s Wi-Fi setting**

Then,

1. If the progress bar is moving on, wait and upgrading will start later on the Station
  2. If the progress bar stops moving and/or Station’s display shows "***Error Code xxx***", turn off the Station and then turn it on.
  3. If Step 2’s problem still exists, check there is no Wi-Fi interference around and reduce the distance between Center, Station and Wireless router/Access Point (if applicable)
-



## **6. Firmware history**

### **Version 1.2.10**

- The software release 1.2.10 has provided a solution for CD ejection problem that has happened on a marginal number of CDs.

### **Version 1.2.0**

- Firmware installed on the set delivered