

PHILIPS

Clock Radio

3000 Series

R3205



User manual

Register your product and get support at
www.philips.com/support

Contents

1	Important	2
	Safety	2

2	Your clock radio	3
	Introduction	3
	What's in the box	3
	Overview of the clock radio	3

3	Get started	4
	Install batteries	4
	Connect power	4
	Set time	4

4	Listen to FM radio	5
	Tune to FM radio stations	5
	Store FM radio stations manually	5
	Select a preset radio station	5
	Adjust volume	5

5	Other features	6
	Set alarm time	6
	Set sleep timer	6

6	Product information	7
----------	----------------------------	----------

7	Troubleshooting	7
----------	------------------------	----------

8	Notice	8
----------	---------------	----------

1 Important

Safety



Warning

- Never remove the casing of this clock radio.
 - Never lubricate any part of this clock radio.
 - Never place this clock radio on other electrical equipment.
 - Keep this clock radio away from direct sunlight, naked flames or heat.
 - Make sure that you always have easy access to the power cord, plug or adaptor to disconnect the clock radio from the power.
- Read these instructions.
 - Heed all warnings.
 - Follow all instructions.
 - Do not block any ventilation openings. Install in accordance with the manufacturer's instructions.
 - Do not install near any heat sources such as radiators, heat registers, stoves, or other apparatus (including amplifiers) that produce heat.
 - Protect the power cord from being walked on or pinched, particularly at plugs, convenience receptacles, and the point where they exit from the clock radio.
 - Only use attachments/accessories specified by the manufacturer.
 - Unplug this apparatus during lightning storms or when unused for long periods of time.
 - Refer all servicing to qualified service personnel. Servicing is required when the apparatus has been damaged in any way, such as power-supply cord or plug is damaged, liquid has been spilled or objects have fallen into the apparatus, the apparatus has been exposed to rain or moisture, does not operate normally, or has been dropped.
 - Battery usage CAUTION - To prevent battery leakage which may result in bodily injury, property damage, or damage to the clock radio:
 - Install all batteries correctly, + and - as marked on the unit.
 - Remove batteries when the unit is not used for a long time.
 - The battery shall not be exposed to excessive heat such as sunshine, fire or the like.
 - This clock radio shall not be exposed to dripping or splashing.
 - Do not place any sources of danger on the clock radio (e.g. liquid filled objects, lighted candles).
 - Where the plug of the Direct Plug-in Adapter is used as the disconnect device, the disconnect device shall remain readily operable.

2 Your clock radio

Congratulations on your purchase, and welcome to Philips! To fully benefit from the support that Philips offers, register your product at www.philips.com/support.

Introduction

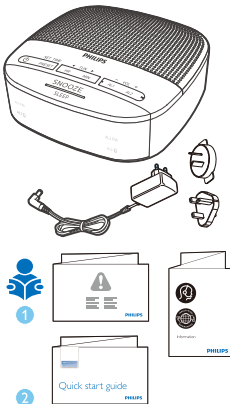
With this clock radio, you can

- listen to FM radio;
- set two alarms to ring at different times.

What's in the box

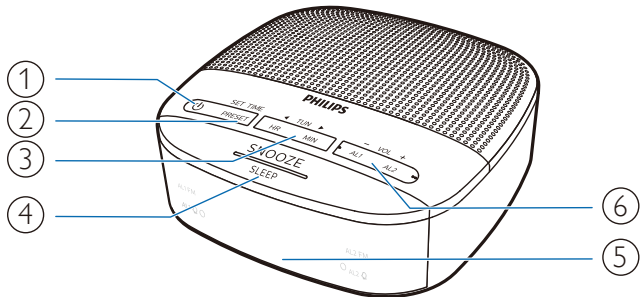
Check and identify the contents of your package:

- Main unit
- AC power adaptor
- Quick start guide
- Safety and Warranty leaflet



Overview of the clock radio

- Power**
 - Turn on or switch to standby.
- PRESET / SET TIME**
 - Store radio stations in memory.
 - Select a preset radio station.
 - Set time.
- HR / MIN / ◀ TUN ▶**
 - Tune to FM radio stations.
 - Set hour and minute.
- SNOOZE / SLEEP**
 - Snooze alarm.
 - Set the sleep timer.
- Display panel**
 - Display current status.
- AL1 / AL2 / – VOL +**
 - Set alarm.
 - Adjust volume.



3 Get started

Always follow the instructions in this chapter in sequence.

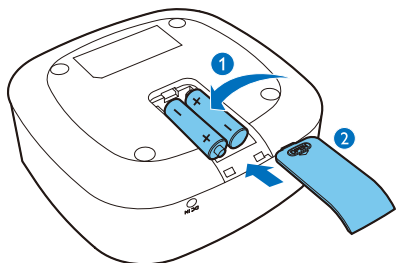
Install batteries

The batteries can only back up clock and alarm settings.

! Caution

- Risk of explosion! Keep the batteries away from heat, sunshine or fire. Never discard batteries in fire.
- Batteries contain chemical substances, so they should be disposed of properly.

Insert 2 AAA batteries (not provided) with correct polarity (+/-) as illustrated.



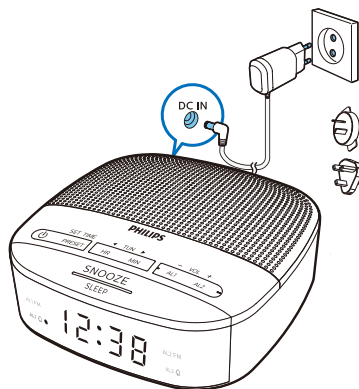
Connect power

! Caution

- Risk of product damage! Make sure that the power voltage corresponds to the voltage printed on the back or underside of the clock radio.
- Risk of electrical shock! When you unplug the power adaptor, always pull the plug from the socket. Never pull the cord.
- Use only the AC power adapter specified in the manufacturer or sold with this unit.

≡ Note

- The type plate is located at the bottom of the clock radio.



Set time

≡ Note

- You can only set time in standby mode.

- 1 In standby mode, press and hold **SET TIME** for 2 seconds.
 - 2 Press **HR** to set hour and **MIN** to set minute, then press **SET TIME** to confirm.
- The time is set.

4 Listen to FM radio



Tip


- To remove a pre-stored station, store another station in its place.



Note

- Keep the clock radio away from other electronic devices to avoid radio interference.
- For better reception, fully extend and adjust the position of the FM antenna.

Tune to FM radio stations

- 1 Press  to turn on the clock radio.
- 2 Press and hold **◀TUN▶** for 2 seconds.
 - ↳ The clock radio tunes to a station with strong reception automatically.
- 3 Repeat Step 2 to tune to more radio stations.

To tune to a station manually:

Press **◀TUN▶** repeatedly to select a frequency.



Note

- The tuning grid of the clock radio is 50KHz, the radio frequency on the display panel will increase 0.1MHz by pressing **◀TUN▶** twice.

Store FM radio stations manually



Note

- You can store a maximum of 10 FM radio stations.

- 1 Tune to an FM radio station.
- 2 Press and hold **PRESET** for 2 seconds to activate programming mode.
 - ↳ The preset number begins to blink.
- 3 Press **◀TUN▶** repeatedly to select a number.
- 4 Press **PRESET** again to confirm.
- 5 Repeat steps 1 to 4 to store more FM radio stations.

Select a preset radio station

In FM tuner mode, press **PRESET** repeatedly to select a preset number:

Adjust volume

While listening, press **–VOL+** to adjust volume.

5 Other features

Set alarm time

Set alarm



Note

- You can only set the alarm in standby mode.
- Make sure that you have set the clock correctly.

- 1 In standby mode, press and hold **AL1** or **AL2** for 2 seconds to set alarm time.
- 2 Press **HR** to set hour and **MIN** to set minute, then press **AL1** or **AL2** to confirm.



Tip

- The unit exits alarm setting mode when being idle for 10 seconds.

Select alarm source

You can select FM radio or buzzer as the alarm source by pressing **AL1** or **AL2** in standby mode.

↳ The corresponding alarm icon lights up.



Note

- The gentle wake-up function is designed for FM radio source only.

Activate/deactivate alarm timer

Press **AL1** or **AL2** repeatedly to activate or deactivate the alarm timer:

- ↳ If the alarm timer is activated, the alarm indicator turns on.
- ↳ If the alarm timer is deactivated, the alarm indicator turns off.

- ↳ The alarm repeats ringing for the next day.
- ↳ To stop the alarm, press the corresponding **AL1** or **AL2**.

Snooze the alarm

When the alarm sounds, press **SNOOZE**.

- ↳ The alarm snoozes and repeats ringing 9 minutes later.

Set sleep timer

This clock radio can switch to standby mode automatically after a preset period.

- Press **SLEEP** repeatedly to select a period (in minutes).
 - ↳ The clock radio switches to standby mode automatically after the preset period.

To deactivate the sleep timer:

- Press **SLEEP** repeatedly until **[OFF]** (off) appears.

120 → 90 → 60 → 30 → 15
 ↑ ↓
 OFF

6 Product information

Note

- Product information is subject to change without prior notice.

Amplifier

Rated Output Power	200mW RMS
--------------------	-----------

Tuner (FM)

Tuning Range	87.5-108 MHz
Tuning Grid	50 KHz
Sensitivity - Mono, 26 dB S/N Ratio	<22 dBf
Total Harmonic Distortion	<3%
Signal to Noise Ratio	>50 dBA

General information

AC Power (power adaptor)	Brand: Philips; Model: DCTO7W050060ZZ-H0 Input: 100-240V~ 50/60 Hz; 0.25A Output: 5V = 0.6A
Operation Power Consumption	<3 W
Standby Power Consumption	<1 W
Dimensions (W x H x D)	131 x 54 x 131 mm
Weight (Main unit)	198.9 g

7 Troubleshooting

Warning

- Never remove the casing of the product

To keep the warranty valid, never try to repair the device yourself.

If you encounter problems when using this device, check the following points before requesting service. If the problem remains unsolved, go to the Philips webpage (www.philips.com/support). When you contact Philips, make sure that the device is nearby and the model number and serial number are available.

No power

- Make sure that the AC power plug of the unit is connected properly.
- Make sure that there is power at the AC outlet.

No sound

- Adjust the volume.

No response from the unit

- Disconnect and reconnect the AC power plug, then turn on the unit again.

Poor radio reception

- Keep the clock radio away from other electronic devices to avoid radio interference.
- Fully extend and adjust the position of the antenna.

Alarm does not work

- Set the clock/alarm correctly.

Clock/alarm setting erased

- Power has been interrupted or the power plug has been disconnected.
- Reset the clock/alarm.

8 Notice

Any changes or modifications made to this device that are not expressly approved by **MMD Hong Kong Holding Limited** may void the user's authority to operate the product. Hereby, **TPVision Europe BV** declares that this product is in compliance with the essential requirements and other relevant provisions of Directive 2014/53/EU. You can find the Declaration of Conformity on www.philips.com/support.



This product complies with the radio interference requirements of the European Community.



This product is designed and manufactured with high-quality materials and components, which can be recycled and reused.



This symbol means the product must not be discarded as household waste and should be delivered to an appropriate collection facility for recycling. Follow local rules and never dispose of the product and rechargeable batteries with normal household waste. Correct disposal of old products and rechargeable batteries helps prevent negative consequences for the environment and human health.



This symbol means that the product contains batteries covered by European Directive 2013/56/EU which cannot be disposed of with normal household waste.

Inform yourself about the the local separate collection system for electrical and electronic products and batteries. Follow local rules and

never dispose of the product and batteries with normal household waste. Correct disposal of old products and batteries helps prevent negative consequences for the environment and human health.

Removing the disposal batteries

To remove the disposable batteries, see battery install section.



Specifications are subject to change without notice.

2020 © Philips and the Philips Shield Emblem are registered trademarks of Koninklijke Philips N.V. and are used under license. This product has been manufactured by and is sold under the responsibility of MMD Hong Kong Holding Limited or one of its affiliates, and MMD Hong Kong Holding Limited is the warrantor in relation to this product.

TAR3205_12_UM_V1.0

