

powerline ethernet adapter

User manual



SYE5600/00



SYK3600/00
SYK5600/00

Continental Europe



SYE5600/05



SYK3600/05
SYK5600/05

United Kingdom and Ireland

PHILIPS



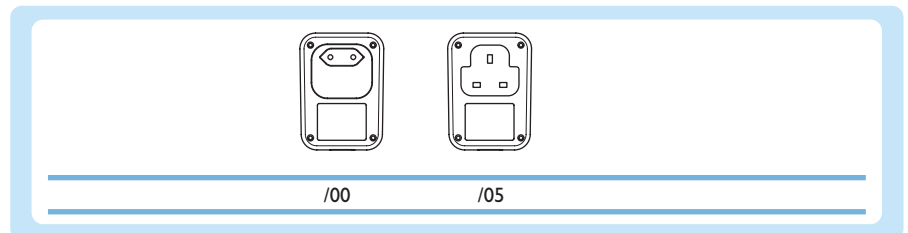
What's in the box	5
Contents	5
What else you'll need.....	5
Result after installation	6
Before you start.....	7
Powerline ethernet adapters	7
User manual.....	7
Safety precautions	7
European regulations.....	8
Overview	8
Powerline ethernet adapter	8
Network cable	9
Install	9
Share the broadband Internet subscription (option A1)	9
Connect a computer (option A2+).....	10
Connect a network device (option A2+).....	11
Secure.....	11
Introduction.....	11
Enable security	12
Disable security	12
Enjoy	12
Powerline ethernet network	12
Need help?	13
Powerline ethernet adapters	13
Troubleshooting.....	13
Powerline ethernet networks	14
Online help	14
Helpline.....	15
Technical data	15
SYE3600.....	15
SYE5600.....	16
Supported protocols	16
Information.....	16
Trademarks	16
Health and safety	16
Maintenance and service	16
Disposal of your old product	16
Warranty.....	17
Disclaimer	17

Contents

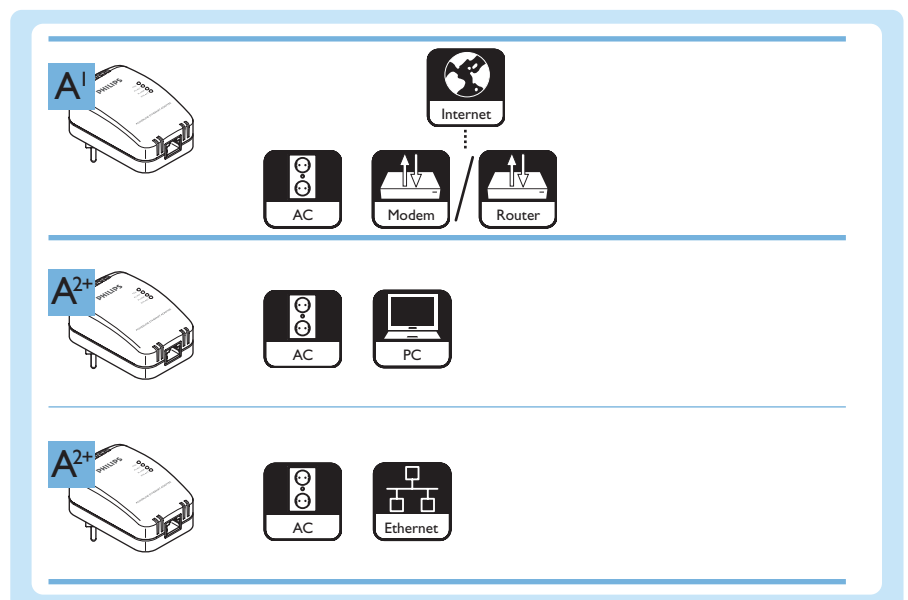
	A	B	C	D
SYK3600 (14 Mbit/s)	2	2	1	1
SYE5600 (85 Mbit/s)	1	1	1	1
SYK5600 (85 Mbit/s)	2	2	1	1

The type of power connector is dependent on the region in which you live. The figures in the user manual show the Continental Europe version of the powerline ethernet adapter.

Version	Region
/00	Continental Europe
/05	United Kingdom and Ireland

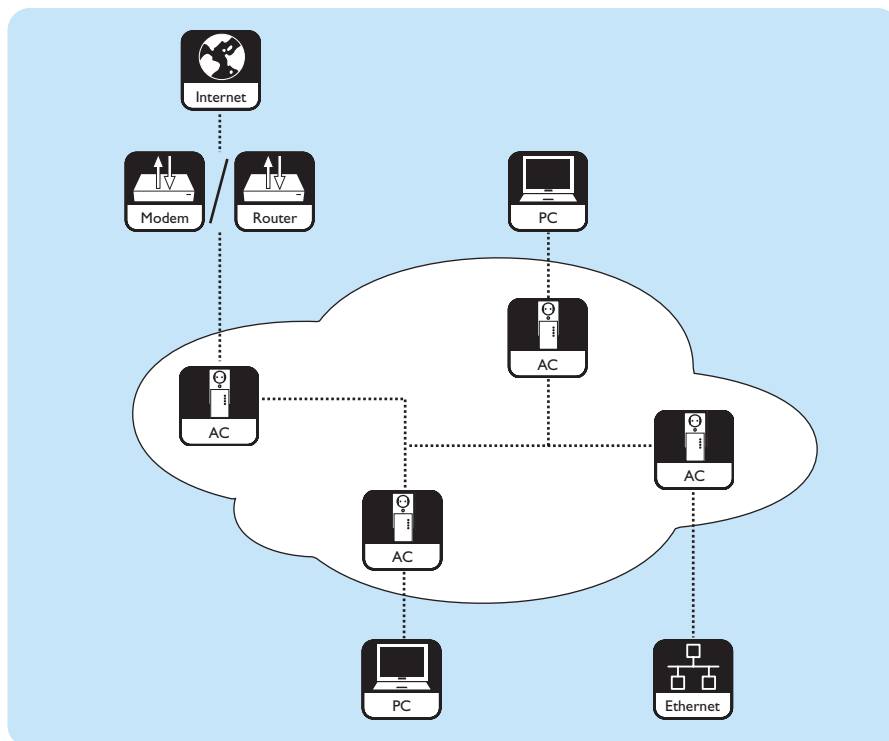


What else you'll need



Result after installation

Refer to the figure below for an example of a powerline ethernet network.



To install a powerline ethernet network, use two or more powerline ethernet adapters.

To connect a network device to the powerline ethernet network, the network device must have an Ethernet UTP5e RJ-45 network port.

Powerline ethernet adapters

- The SYK3600 package contains two SYE3600 powerline ethernet adapters.
- The SYK5600 package contains two SYE5600 powerline ethernet adapters.

User manual

- Follow the procedures described in the user manual.
- Keep the security CD for future reference.

Tip The documents of the connected devices can contain additional information. For example, the user manual of your computer, games console, modem or router.

Safety precautions

WARNING THE PRODUCT IS A CLASS A PRODUCT. IN A DOMESTIC ENVIRONMENT THIS DEVICE MAY CAUSE RADIO INTERFERENCE IN WHICH CASE THE USER MAY BE REQUIRED TO TAKE ADEQUATE MEASURES.

WARNING THE PRODUCT USES THE SHORT-CIRCUIT (OVER CURRENT) PROTECTION OF THE ELECTRIC INSTALLATION OF THE BUILDING.

WARNING DO NOT CHANGE THE ELECTRIC INSTALLATION OF THE BUILDING. ONLY AUTHORIZED INSTALLERS CAN CHANGE THE ELECTRIC INSTALLATION.

WARNING DO NOT USE THE PRODUCT WITH FUSES OR CIRCUIT BREAKERS LARGER THAN 120 V(AC), 15 A OR 240 V(AC), 6 A.

- Before you install the product, make sure that the voltage on the type plate of the product is the same as the voltage of the connected power supply.
- Do not use the product outdoors.
- Do not expose the product to moisture or water. Do not put objects that contain liquids on or near the product (for example, vases). The product is not suitable for wet areas.
- Do not expose the product to heat sources (for example, heating equipment or direct sunlight).
- Do not expose the product to sand or dust.
- Make sure that there is enough free space around the product for ventilation.
- Do not open the product.
- Do not cut connected network cables.
- Before you clean the product, disconnect the product from the power supply.
- Do not clean the product with liquid or aerosol cleaners. Only clean the product with a damp cloth.

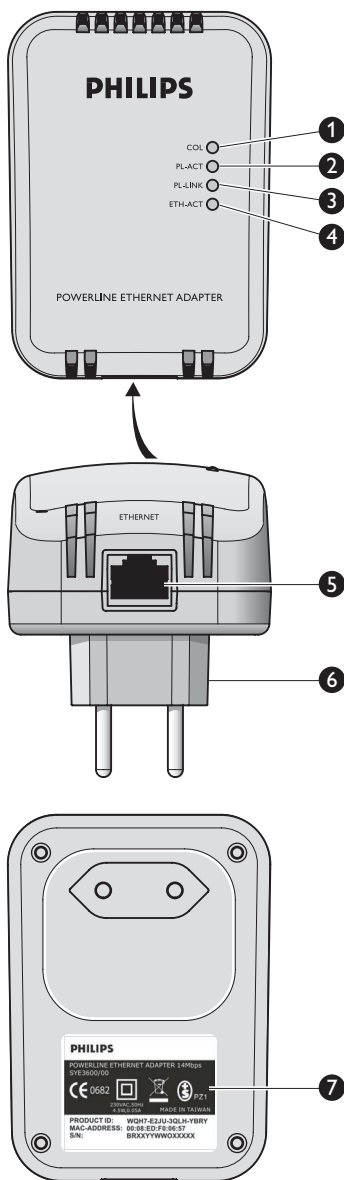
European regulations

The product has been designed, tested and manufactured according to the European R&TTE directive 1999/5/EC. Under this directive, the product can be used in all member states of the European Union.

Overview

Powerline ethernet adapter

- The SYK3600 package contains two SYE3600 powerline ethernet adapters.
- The SYK5600 package contains two SYE5600 powerline ethernet adapters.



1 Network collision light

Shows the collisions on the home powerline wiring.

- Flashing - Increased use of the home powerline wiring
- Off - No collisions on the home powerline wiring

2 Powerline activity light

Indicates the activity on the home powerline wiring.

- Off - No activity
- Flashing - Activity

3 Powerline link light

Indicates the status of the network connection.

- Off - No other powerline ethernet adapter found
- Flashing - Searching for other powerline ethernet adapter
- On - Connected to other powerline ethernet adapter

4 Ethernet activity light

Indicates the activity on the Ethernet port.

- Off - No activity
- Flashing - Activity

5 Network port

Connects a network cable (Ethernet UTP5e) to a network device.

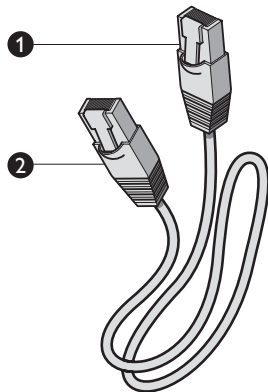
6 Power connector

Connects to the power supply.

7 Product identification label

Contains the product identification code to enable personal security.

Network cable



1 Ethernet UTP5e RJ-45 connector

Either - Connects to the network port of the powerline ethernet adapter

Or - Connects to the network device

2 Ethernet UTP5e RJ-45 connector

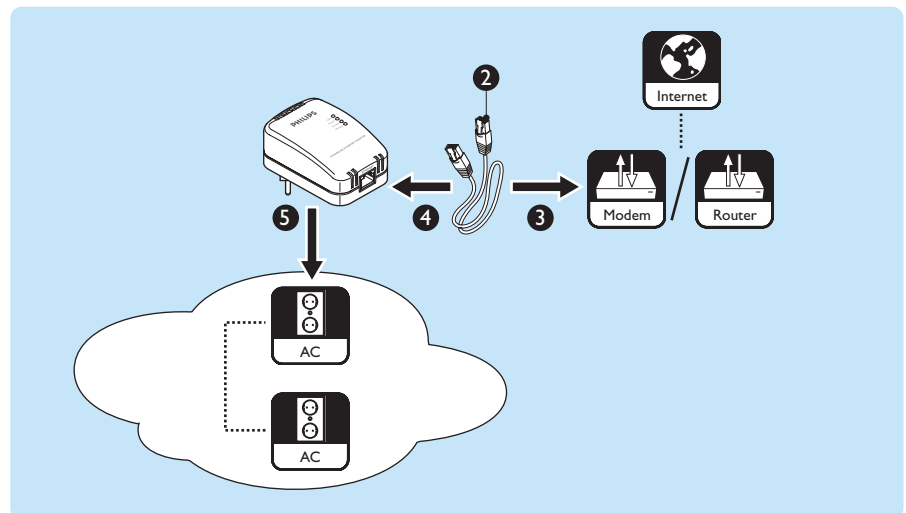
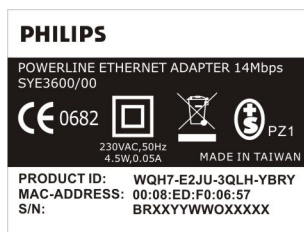
Either - Connects to the network port of the powerline ethernet adapter

Or - Connects to the network device

Install

Share the broadband Internet subscription (option A1)

- When you want to enable personal security on the powerline ethernet network, write down the **Product ID** code (for example, **WQH7-E2JU-3QLH-YBRY**). Refer to 'Secure' on page 11.



- Take the network cable.
- Plug the connector of the network cable into the network port of the modem or router.
- Plug the other connector of the network cable into the network port of the powerline ethernet adapter.
- Plug the powerline ethernet adapter into the power supply.
 - > The **PL-LINK** light comes on.
- Connect a computer or a network device to the powerline ethernet network (refer to the options A2+).

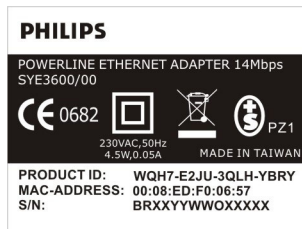
Dependent upon the type of broadband Internet subscription, one or more computers or network devices can share the broadband Internet subscription. Contact your Internet service provider for more information.

When two or more network devices share the broadband Internet subscription, a router is required. When your Internet service provider did not provide a modem with an integrated router, you must install a separate router.

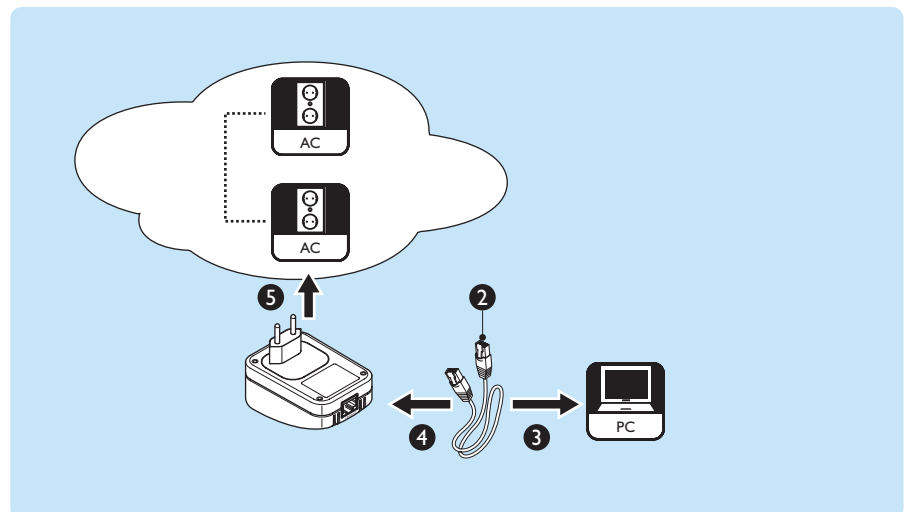
Refer to www.philips.com/ce for the latest Philips routers (base stations).

Connect a computer (option A2+)

It is not necessary to install a driver in the connected PC for the powerline ethernet adapter. However, the Ethernet adapter in the connected PC needs a driver to operate correctly.



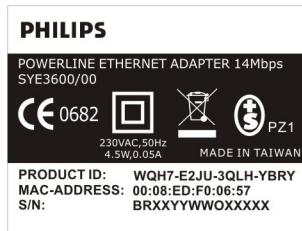
- I When you want to enable personal security on the powerline ethernet network, write down the **Product ID** code (for example, **WQH7-E2JU-3QLH-YBRY**). Refer to 'Secure' on page 11.



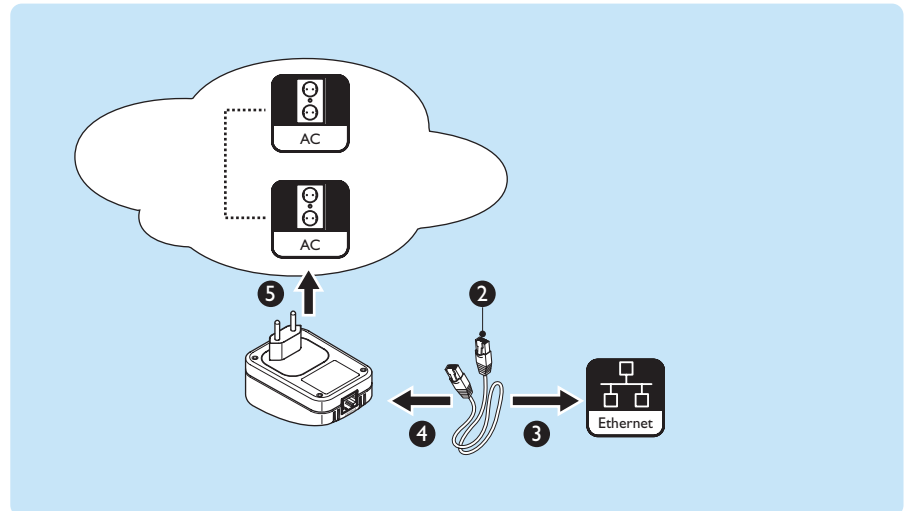
- 2 Take the network cable.
- 3 Plug the connector of the network cable into the network port of the computer.
- 4 Plug the other connector of the network cable into the network port of the powerline ethernet adapter.
- 5 Plug the powerline ethernet adapter into the power supply.
 - > The **PL-LINK** light comes on.

Connect a network device (option A2+)

Examples of network devices are: games consoles, multimedia adapters and network attached storages.



- I When you want to enable personal security on the powerline ethernet network, write down the **Product ID** code (for example, **WQH7-E2JU-3QLH-YBRY**). Refer to 'Secure' on page 11.



- 2 Take the network cable.
- 3 Plug the connector of the network cable into the network port of the network device.
- 4 Plug the other connector of the network cable into the network port of the powerline ethernet adapter.
- 5 Plug the powerline ethernet adapter into the power supply.
 - > The **PL-LINK** light comes on.

Secure

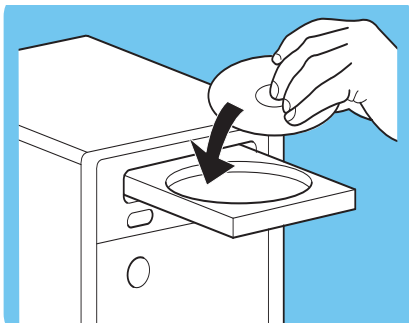
Introduction

You can enable and disable personal security of the data transmissions with the security CD and a computer with one of these operating systems:

- Microsoft Windows® 2000
- Microsoft Windows® XP

To enable personal security, drivers must be installed. These drivers communicate with the powerline ethernet adapters.

The default security code is: **HomePlug**.

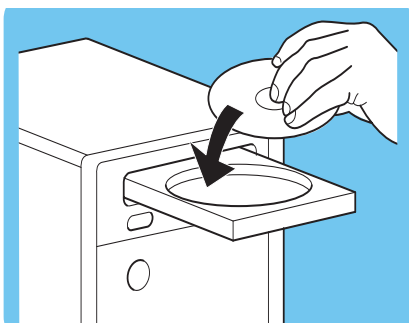


Enable security

- 1 Put the security CD in the CD or DVD drive of the computer.
 - > *The security CD starts automatically.*
- 2 Follow the on-screen instructions.

If the security CD does not start automatically:

- 1 Open **My Computer**.
- 2 Right-click on the CD or DVD drive.
- 3 Click on **Autoplay**.
 - > *The security CD starts.*



Disable security

- 1 Put the security CD in the CD or DVD drive of the computer.
 - > *The security CD starts automatically.*
- 2 Follow the on-screen instructions.

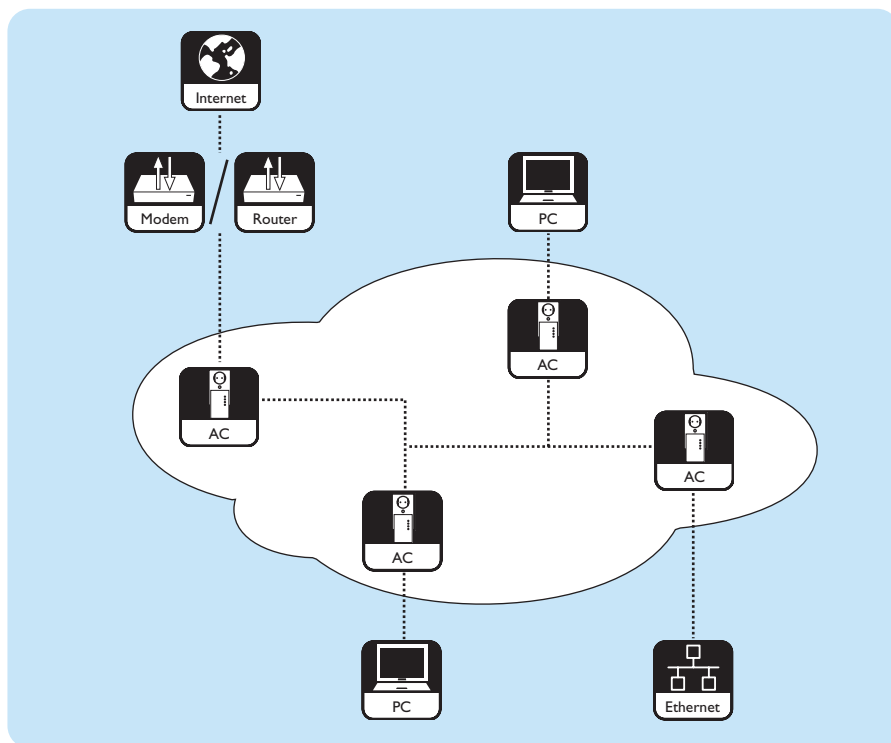
If the security CD does not start automatically:

- 1 Open **My Computer**.
- 2 Right-click on the CD or DVD drive.
- 3 Click on **Autoplay**.
 - > *The security CD starts.*

Enjoy

Powerline ethernet network

Refer to the figure below for an example of a powerline ethernet network.



Powerline ethernet adapters

- The SYK3600 package contains two SYE3600 powerline ethernet adapters.
- The SYK5600 package contains two SYE5600 powerline ethernet adapters.

Troubleshooting

Problem	Tip
The security CD does not start.	Start the security CD manually: 1. Open My computer . 2. Right-click on the CD or DVD drive. 3. Click on Autorun .
The lights on the powerline ethernet adapter do not come on.	Plug the powerline ethernet adapter into an active power supply.
The PL-LINK light does not come on.	Connect two or more powerline ethernet adapters to the home powerline wiring. Plug the powerline ethernet adapters into active power supplies. Disable the personal security of all powerline ethernet adapters. Refer to 'Disable security' on page 12.
Unknown devices can access my network.	Enable personal security. Refer to 'Enable security' on page 12.
I can access unknown devices on my network	Enable personal security. Refer to 'Enable security' on page 12.
The speed between my powerline ethernet adapters is low	Refer to 'Powerline ethernet networks' on page 14.
The COL light flashes or comes on.	The COL light can flash or come on under normal circumstances.

Powerline ethernet networks

The advertised maximum speed between two SYE3600 powerline ethernet adapters is 14 Mbit/s. The 14 Mbit/s includes the added data that is necessary to send the actual data from one powerline ethernet adapter to another. In a 'clean' environment, the maximum data speed between two SYE3600 powerline ethernet adapters can be up to 5 Mbit/s.

The advertised maximum speed between two SYE5600 powerline ethernet adapters is 85 Mbit/s. The 85 Mbit/s includes the added data that is necessary to send the actual data from one powerline ethernet adapter to another. In a 'clean' environment, the maximum data speed between two SYE5600 powerline ethernet adapters can be up to 25 Mbit/s.

How 'clean' the powerline ethernet network is, is dependent upon:

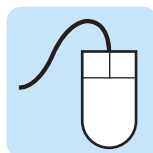
- The quality of the cables of the electric installation.
- The number of connected powerline ethernet adapters. Each powerline ethernet adapter gets a part of the available bandwidth. The higher the number of connected powerline ethernet adapters, the lower the bandwidth per powerline ethernet adapter. The maximum number of powerline ethernet adapters on the same powerline ethernet network is 15.
- The distance between the powerline ethernet adapters. The maximum cable length between two powerline ethernet adapters is 200 m.
- The electrical noise in the powerline ethernet network. For example, washing machines, cell phone chargers and light dimmers can cause electrical noise.
- The way in which the powerline ethernet adapter is connected to the power supply in the wall. We recommend you to connect the powerline ethernet adapter as close to a wall as possible. If possible, do not use an uninterrupted power supplies or multi-way sockets to connect the powerline ethernet adapter to the power supply in the wall.
- The shortage of phase couplers in the electric installation. For an optimal connection from a powerline ethernet adapter on one phase to another powerline ethernet adapter on another phase, the phases must be coupled.

WARNING DO NOT CHANGE THE ELECTRIC INSTALLATION OF THE BUILDING. ONLY AUTHORIZED INSTALLERS CAN CHANGE THE ELECTRIC INSTALLATION.

Online help

Refer to www.philips.com/support for:

- Interactive help
- Frequently asked questions





Helpline

Country	Telephone number	Costs per minute
België/Belgique/Belgien	070 253 010	€ 0.17
Danmark	3525 8761	
Deutschland	0180 5 007 532	€ 0.20
Ελλάς	008003122 1223	
España	902 888 785	€ 0.15
France	08 9165 0006	€ 0.23
Ireland	01 601 1161	
Italia	199 404 042	€ 0.21
Luxemburg/Luxembourg	26 84 30 00	
Nederland	0900 0400 063	€ 0.20
Norge	2270 8250	
Österreich	0820 901115	€ 0.20
Portugal	2 1359 1440	
Schweiz/Suisse/Svizzera	02 2310 2116	
Suomi	09 2290 1908	
Sverige	08 632 0016	
Türkiye	0800 216 3302	
United Kingdom	0906 1010 017	£ 0.15

Be prepared to give this information:

- A description of the problem and when it occurs
- The type number on the label of the product
- The date of purchase

Technical data

SYE3600

The SYK3600 package contains two SYE3600 powerline ethernet adapters.

Standard	HomePlug 1.0 compliant
Gross transmission rate	14 Mbit/s
Frequency band	4.3 - 20.9 MHz
Power source	100 - 240 V(AC), 50 - 60 Hz
Port	IEEE 802.3 RJ-45
Encryption	56-bit data encryption security key
Operating temperature	0 - 40 °C

SYE5600

The SYK5600 package contains two SYE5600 powerline ethernet adapters.

Standard	HomePlug 1.0 compliant
Gross transmission rate	85 Mbit/s
Frequency band	4.3 - 20.9 MHz
Power source	100 - 240 V(AC), 50 - 60 Hz
Port	IEEE 802.3 RJ-45
Encryption	56-bit data encryption security key
Operating temperature	0 - 40 °C

Supported protocols

The powerline ethernet adapters are compatible with:

- Devices that comply to IEEE802.3
- All other HomePlug appliances

Information

Trademarks

Windows is a registered trademark of Microsoft Corporation in the United States and other countries.

Health and safety

Philips Royal Electronics manufactures and sells many products targeted at consumers, which, like any electronic apparatus, in general have the ability to emit and receive electro magnetic signals. One of Philips' leading Business Principles is to take all necessary health and safety measures for our products, to comply with all applicable legal requirements and to stay well within the EMF standards applicable at the time of producing the products. Philips is committed to develop, produce and market products that cause no adverse health effects. Philips confirms that if its products are handled properly for their intended use, they are safe to use according to scientific evidence available today. Philips plays an active role in the development of international EMF and safety standards, enabling Philips to anticipate further developments in standardization for early integration in its products.

Maintenance and service

If the product is defective and needs repair, but the warranty period has expired, you can consult our specialists (refer to page 15).

Disposal of your old product



Your product is designed and manufactured with high quality materials and components, which can be recycled and reused. When this crossed-out wheeled bin symbol is attached to a product it means the product is covered by the European Directive 2002/96/EC. Please inform yourself about the local separate collection system for electrical and electronic products. Please act according to your local rules and do not dispose of your old products with your normal household waste. The correct disposal of your old product will help prevent potential negative consequences for the environment and human health.

Warranty

For the Philips warranty applicable to this product, we refer you to the Philips website www.philips.com/guarantee,

Disclaimer

Specifications are subject to change without notice. Trademarks are the property of Koninklijke Philips Electronics N.V. or their respective owners. 2006 © Koninklijke Philips Electronics N.V. All rights reserved.



Specifications are subject to change without notice.
Trademarks are the property of Koninklijke Philips Electronics N.V. or their respective owners.
2006 © Koninklijke Philips Electronics N.V. All rights reserved.

www.philips.com

DFU-SY600-EN-I