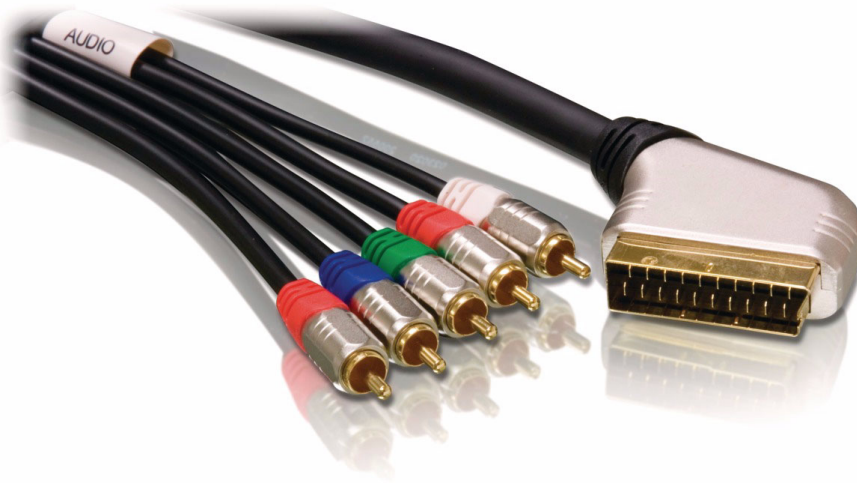


Philips
Component video cable

5 m
Stereo Audio

SWV5540



Create a superior viewing experience

with this smart cable

Take your components to superior performance. This high end cable offers an improved connection for transferring audio/video signals between components.

Enjoy superior picture quality

- 24 carat gold-plated connectors optimize signal

Enjoy better audio quality

- 4-Cut connectors for secure connections
- Stranded conductor extends durability

Protects against signal loss

- 100% aluminum shielding
- Oxygen-free copper conductor for ideal signal transfer
- Copper braided reinforced aluminum shielding
- Foam Polyethylene (FPE) Dielectric

Easy installation

- Non-slip ergonomic grip for easy use
- Plug and play for easy use

PHILIPS

Component video cable
5 m Stereo Audio

Specifications

Packaging Data

- Quantity: 1
- EAN/UPC/GTIN: 87 10895 93455 8
- Gross weight: .74 kg
- Tare weight: .13 kg
- Net weight: .61 kg
- Length: 265 mm
- Width: 195 mm
- Height: 100 mm

Inner Carton

- EAN/UPC/GTIN: 87 10895 97054 9
- Quantity: 2
- Gross weight: 1.82 kg
- Tare weight: .6 kg

- Net weight: 1.22 kg
- Length: 280 mm
- Width: 175 mm
- Height: 210 mm

Outer Carton

- EAN/UPC/GTIN: 87 10895 97055 6
- Quantity: 4
- Gross weight: 4.31 kg
- Tare weight: 1.87 kg
- Net weight: 2.44 kg
- Length: 370 mm
- Width: 300 mm
- Height: 230 mm

SWV5540/10

Highlights

24 carat gold-plated connector

24 carat gold-plated connectors ensure the best signal quality for your components.

4-Cut connectors

4-Cut connectors ensure secure connections between your component and your cable.

100% aluminum shielding

This protective layer of aluminum guards against electromagnetic interference for improved signal quality.

Twisted high purity OFC

This oxygen-free copper conductor provides the highest accuracy in signal transfer with minimal resistance.

Braided shielding

Copper braided reinforced aluminum shielding protects against signal loss and interference.

FPE Dielectric

Foam Polyethylene (FPE) dielectric is a superior insulation material that protects against signal loss.

Easy grip

This non-slip grip makes connecting your components easy and ergonomically comfortable.

Plug and play

Plug and play offers easy installation of components without time-consuming installations.



Issue date 2019-04-24

Version: 2.0.4

12 NC: 9082 100 06356
EAN: 87 10895 93458 9

© 2019 Koninklijke Philips N.V.
All Rights reserved.

Specifications are subject to change without notice.
Trademarks are the property of Koninklijke Philips N.V.
or their respective owners.

www.philips.com