

---

**EN** Quick Start Guide

---

**FR** Guide d'utilisation rapide

---

**DE** Kurzanleitung

---

**NL** Korte handleiding

---

**ES** Guía de inicio rápido

---

**PT** Guia de iniciação rápida

---

**IT** Guida rapida all'uso

---

**GR** Οδηγός γρήγορης έναρξης

---

**DK** Vejledning til hurtig betjening

---

**SE** Snabbstartsguide

---

**NO** Instruks for hurtigstart

---

**FI** Pika-aloitusopas

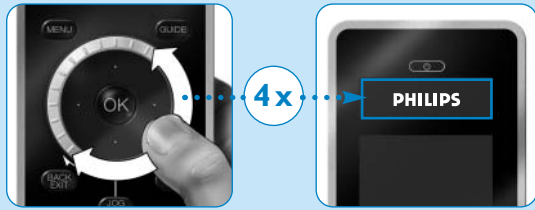
---

**Quick & Easy Setup**  
[www.philips.com/urc](http://www.philips.com/urc)

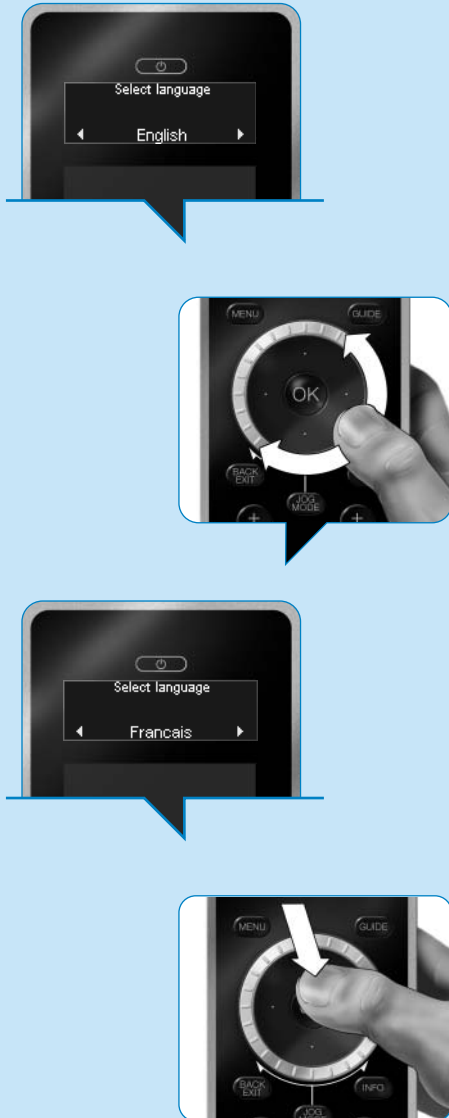
---



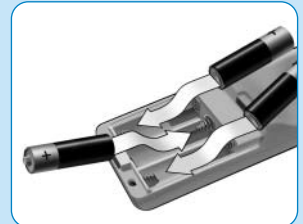
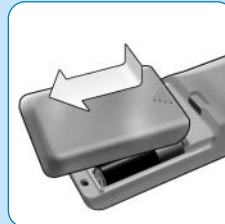
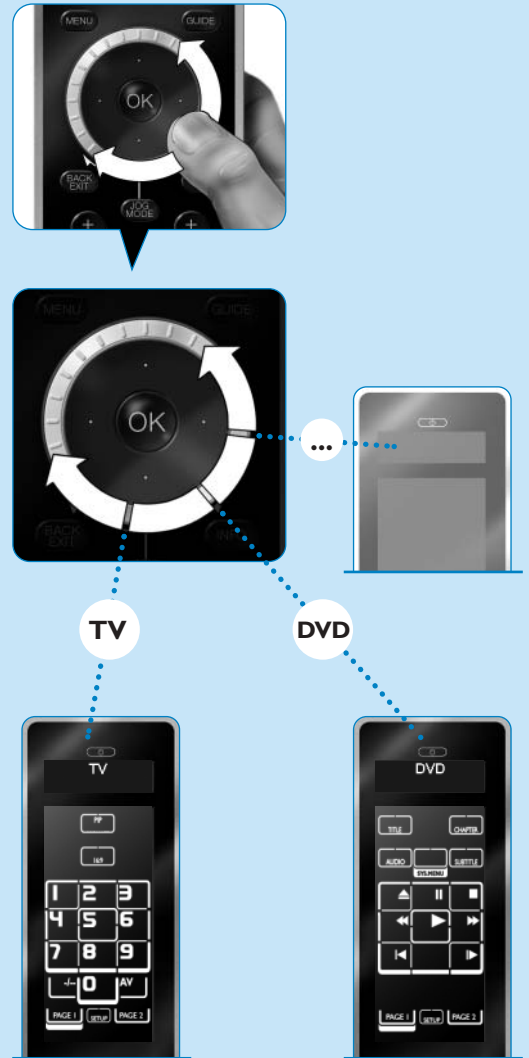
1



2



3





Specifications are subject to change without notice.  
Trademarks are the property of Koninklijke Philips Electronics N.V.  
or their respective owners.  
2005 © Koninklijke Philips Electronics N.V. All rights reserved.

[www.philips.com](http://www.philips.com)

3104 205 3417.2