



SPC220NC Webcam installation

**How to install the Philips SPC220NC on
Windows XP
Windows Vista ?**

Table of contents

Table of contents	2
1. For which products?	2
2. What has been changed?	2
3. How to install the Philips SPC220NC on Windows XP?.....	3
4. How to install the Philips SPC220NC on Windows Vista?.....	4

1. For which products?

Type: (Device type number on label)	SPC220NC/00 SPC220BC/00 SPC220NC/27
String: (Device name as seen in Windows TM)	Philips SPC220NC Webcam
From driver version:	1.0.0.x
To driver version:	1.0.0.5

2. What has been changed?

Initial release

- April 2007.

Changes from the previous drivers to 5.8.8.38

- Released 17 July 2008.
- Added Windows Vista 32bit

The Philips Intelligent Agent does support the Philips SPC220NC webcam.

3.How to install the Philips SPC220NC on Windows XP?

Do NOT connect the webcam to your computer yet.

1



Close all open applications.



2

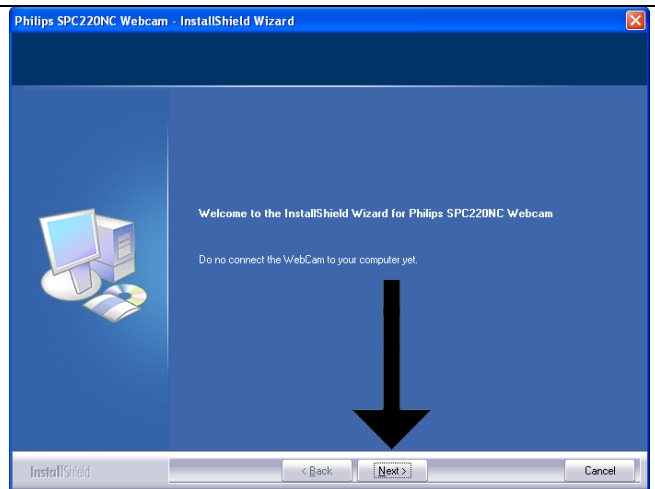
Start the file you downloaded.



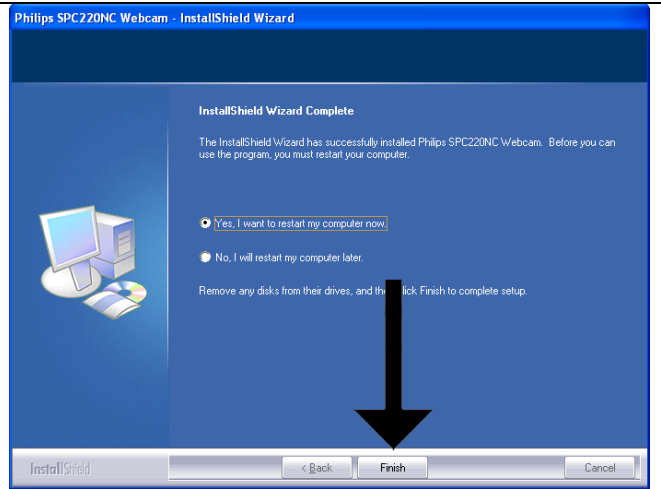
SPC220NC.exe

3

Choose Next



4 Click "Finish" to restart your computer.



5

When your computer has restarted, connect your webcam.

Enjoy using your SPC220NC webcam!



4. How to install the Philips SPC220NC on Windows Vista 32bit?

Do NOT connect the webcam to your computer yet.

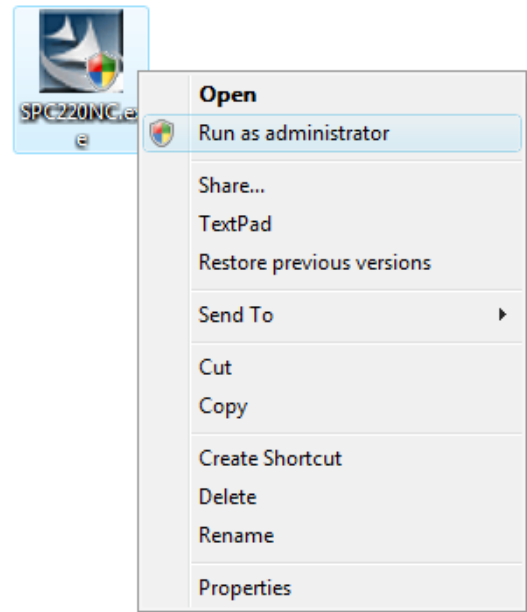
1



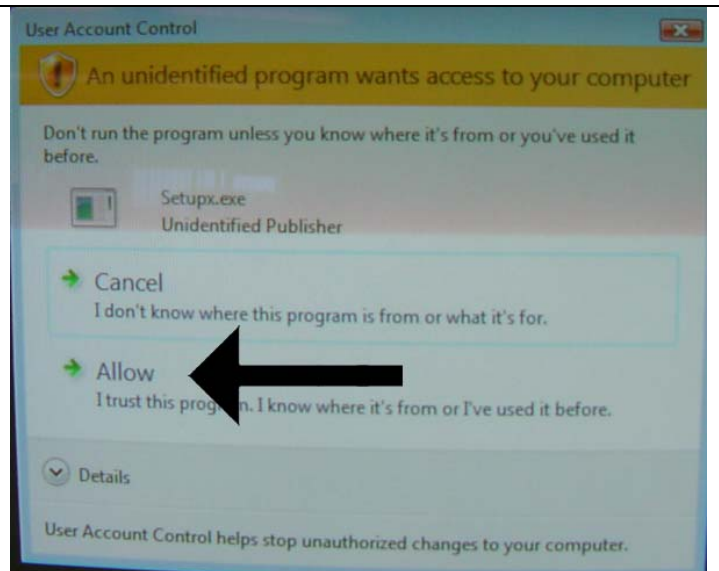
Close all open applications.



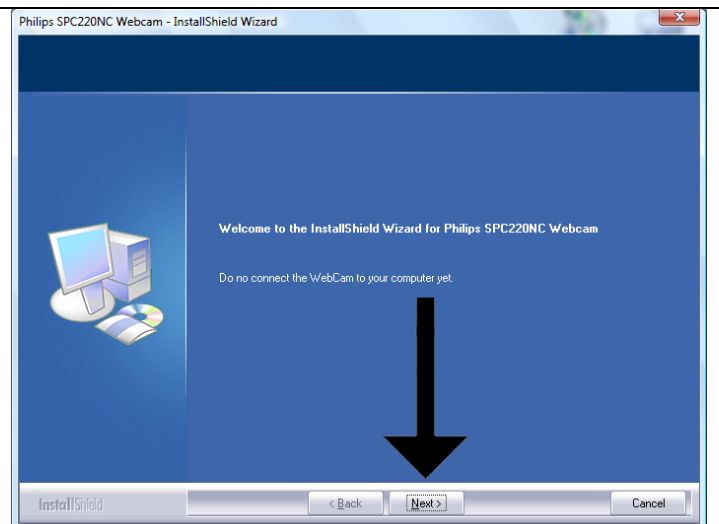
2 RIGHT click on the file you downloaded and choose "Run as administrator".



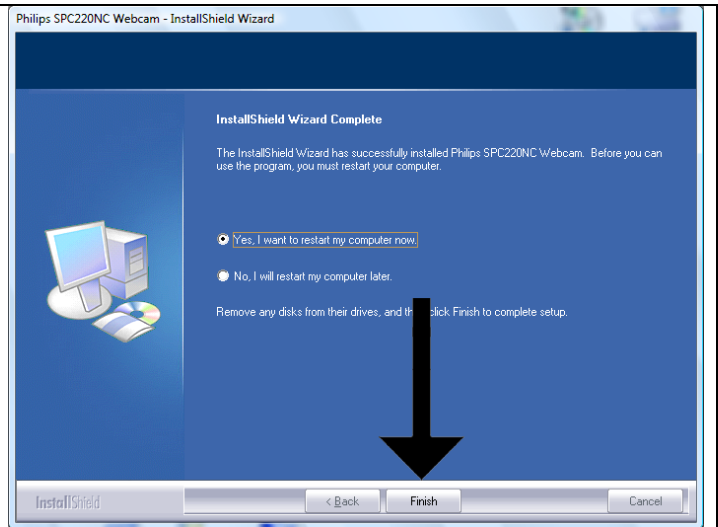
3 Choose "Allow".



4 Choose Next



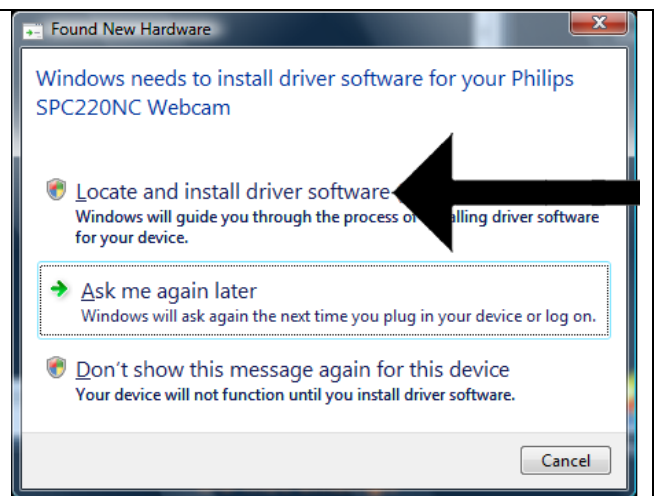
5 Click "Finish" to restart your computer.



6 When your computer has restarted, connect your webcam.



7 Choose "Locate and install driver software".

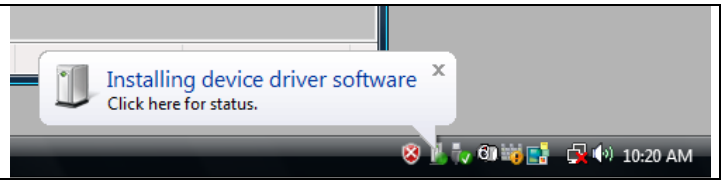


8 Enter the administrator password when requested.

9

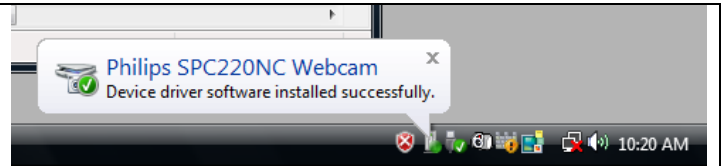
Windows is installing the correct driver.

Please wait some seconds.



10

Enjoy using your SPC220NC webcam!



In case you started the installation (step 2) on Windows Vista as a standard user, the installation will fail. Please restart your computer and try again, now using "Run as administrator".



© 2008 Koninklijke Philips Electronics N.V.
All rights reserved.