

Always there to help you  
Register your product and get support at  
[www.philips.com/welcome](http://www.philips.com/welcome)

SPA2100



# User manual

**PHILIPS**



# Contents

---

<b>1 Safety</b>	2
Important safety instructions	2
<b>2 Notice</b>	2
Recycling	3
<b>3 Your speaker</b>	3
<b>4 Use your speaker</b>	4
<b>5 Product information</b>	6
<b>6 Troubleshooting</b>	6

# 1 Safety

---

## Important safety instructions

- Read and follow all these instructions.
- The product shall not be exposed to dripping or splashing and no objects filled with liquids, such as vases, shall be placed on the product.
- No naked flame sources, such as lighted candles, shall be placed on the products.
- Keep this product away from direct sunlight, naked flames or other heat sources.
- Only use attachments/accessories specified by the manufacturer.



### Warning

- Never remove the casing of this product.
- Never place this product on other electrical equipment.

## 2 Notice

Any changes or modifications made to this device that are not expressly approved by WOOX Innovations may void the user's authority to operate the equipment.

This product complies with the radio interference requirements of the European Community.



# Recycling

Your product is designed and manufactured with high quality materials and components, which can be recycled and reused.



When you see the crossed-out wheel bin symbol attached to a product, it means the product is covered by the European Directive 2002/96/EC:

Never dispose of your product with other household waste. Please inform yourself about the local rules on the separate collection of electrical and electronic products. The correct disposal of your old product helps prevent potentially negative consequences on the environment and human health.



## Environmental information

All unnecessary packaging has been omitted. We have tried to make the packaging easy to separate into three materials: cardboard (box), polystyrene foam (buffer) and polyethylene (bags, protective foam sheet.) Your system consists of materials which can be recycled and reused if disassembled by a specialized company. Please observe the local regulations regarding the disposal of packaging materials, and old equipment.



### Note

- The type plate is located on the back of the apparatus.

## 3 Your speaker

Congratulations on your purchase and welcome to Philips!  
To fully benefit from the support that Philips offers, register your product at [www.philips.com/welcome](http://www.philips.com/welcome).

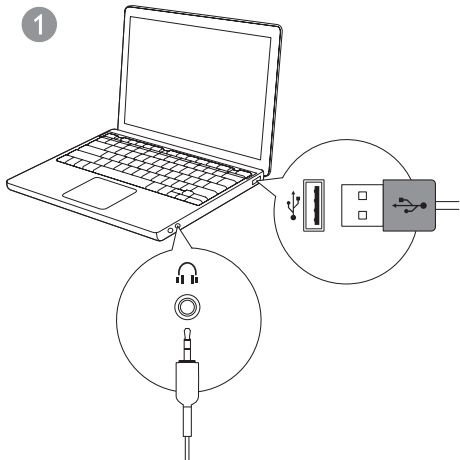
If you contact Philips, you will be asked for the model and serial number of this device. The model number and serial number are on the back of the device. Write the numbers here:

Model No. \_\_\_\_\_

Serial No. \_\_\_\_\_

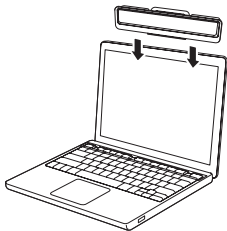
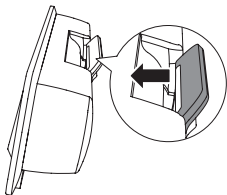
## 4 Use your speaker

- 1 Insert the USB plug into the USB socket of your PC.
- 2 Insert the audio input plug into the headphone jack of your PC. (Fig.1)



**3** Clip the speaker on the top of your notebook screen.(Fig.2)

**2**




**4** Adjust the volume of your PC.

**5** After use, disconnect the USB and audio input plugs.

# 5 Product information

## Specifications

---

USB Power Input	5 V  500 mA
-----------------	--

---

### Dimensions

- Main Unit (W x H x D)	250 x 61 x 39 mm
-------------------------	------------------

---

### Weight

- Main Unit	0.23kg
-------------	--------

---

## System Requirements:

---

### PC

Windows® 98SE, Windows® ME, Windows® 2000, Windows® XP, or Windows® Vista™, Windows 7

### Mac

Mac OS9/OS® X, or later

---

# 6 Troubleshooting

To keep the warranty valid, never try to repair the system yourself. If you encounter problems when using the product, check the following points before requesting service. If the problem remains unsolved, register your product and get support at [www.philips.com/support](http://www.philips.com/support).

## No sound

- Make sure that the speaker is correctly connected.
- Adjust the volume of your PC.







Specifications are subject to change without notice  
2013 © WOOX Innovations Limited. All rights reserved.  
This product was brought to the market by WOOX  
Innovations Limited or one of its affiliates, further referred  
to in this document as WOOX Innovations, and is the  
manufacturer of the product. WOOX Innovations is the  
warrantor in relation to the product with which this booklet  
was packaged. Philips and the Philips Shield Emblem are  
registered trademarks of Koninklijke Philips N.V.

