



## COMPATIBILITY STATUS BETWEEN WINDOWS VISTA AND SNU5600 Wireless USB Adapter



### FOR WINDOWS VISTA DRIVER:

- If it's a new installation please download the Setup.exe.  
Please click on the following link:

[http://www.p4c.philips.com/cgi-bin/dcbint/get?id=SNU5600/00&doctype=dwv&redirect=1\\*](http://www.p4c.philips.com/cgi-bin/dcbint/get?id=SNU5600/00&doctype=dwv&redirect=1*)

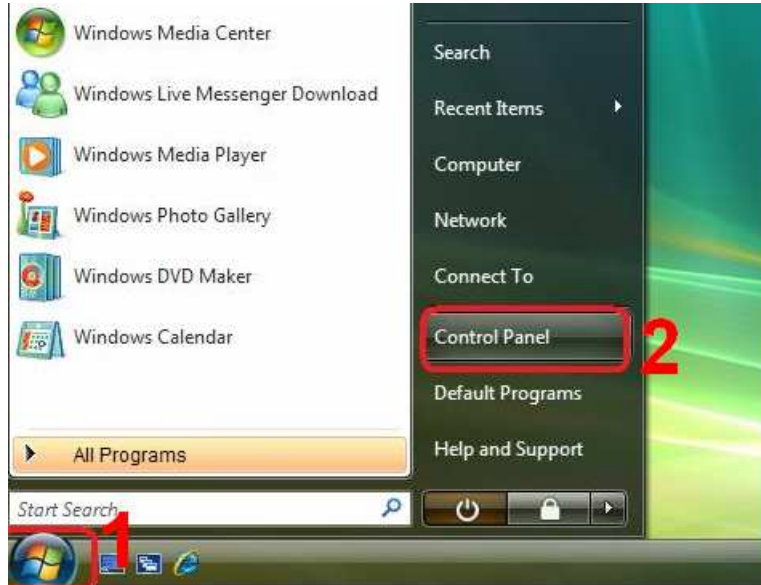
Unzip the file, execute Setup.exe and follow instructions.

- If it's an update, please first Uninstall Philips SNU5600 Wireless USB Adapter. (See next page)



## How to install the SNU5600 Wireless USB Adapter

- Please first Click on  than *Control Panel* :



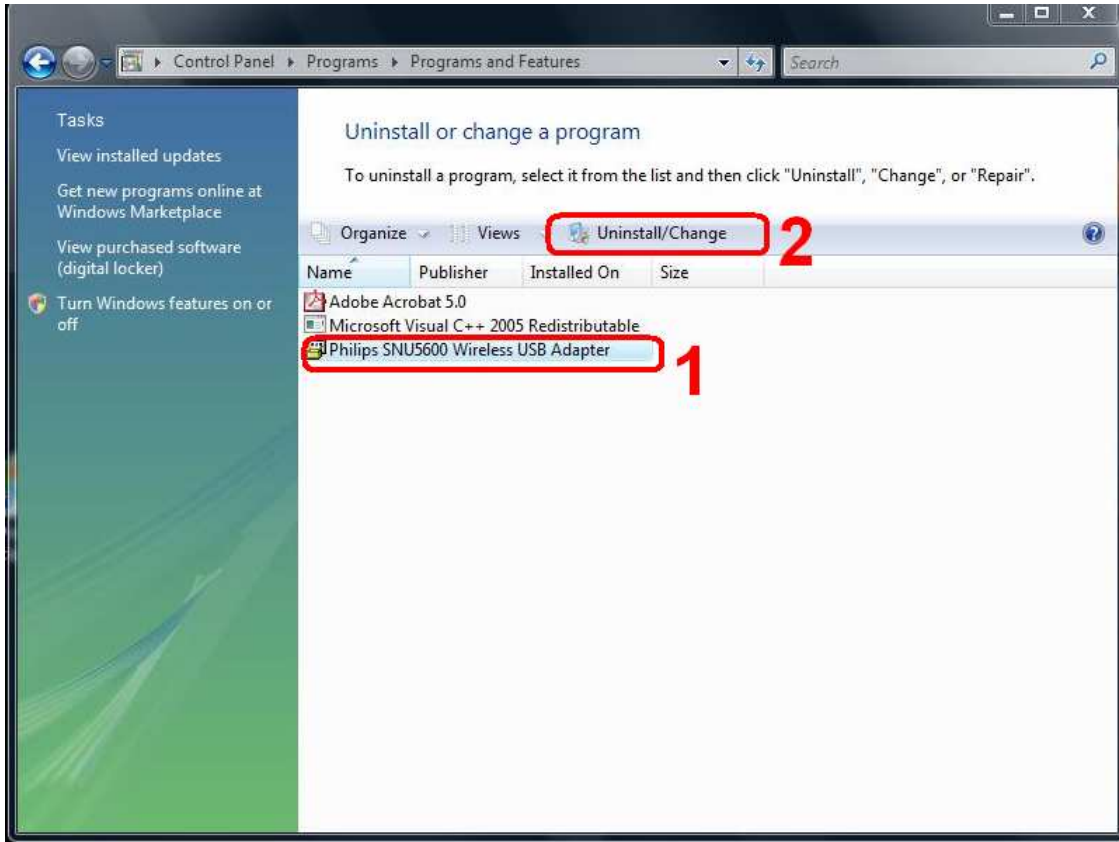
- Click on *Uninstall a program*:



- Click first on *SNU5600 Wireless USB Adapter* than *Uninstall/Change*:



## How to install the SNU5600 Wireless USB Adapter



- Follow all instructions and confirm your Uninstall by “Finish”:

