

Welcome

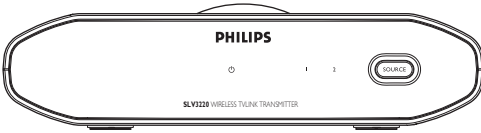
Quick start guide

- 1 Connect transmitter
- 2 Connect receiver
- 3 Enjoy

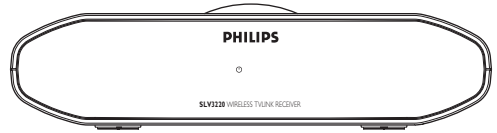


PHILIPS

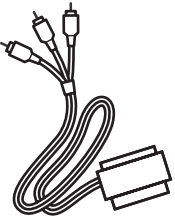
What's in the box



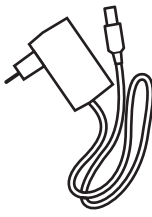
A. Transmitter



B. Receiver



C. SCART/RCA cable



D. Power adapter (2x)



E. Quick start guide

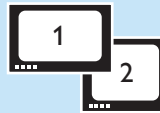


F. Remote control blaster cord

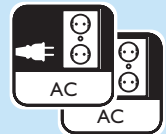


G. User manual

What else you'll need



Television 1 and 2



Power outlet (2x)



Video cassette recorder

or



DVD recorder

or



DVD player

or



Satellite receiver

or



Set-top box

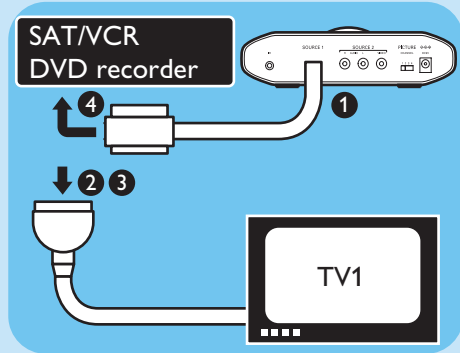
1 or 2 video sources

1

Connect transmitter

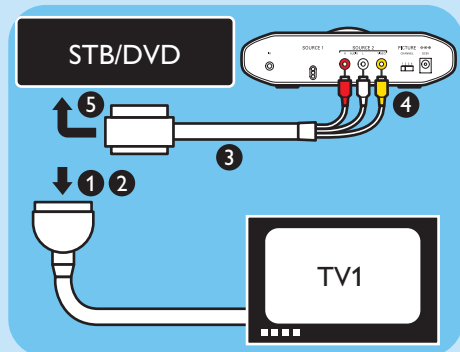
A Connect the SAT,VCR or DVD recorder

1. Take the supplied transmitter (A).
2. Find the SCART cable from the video source that is connected to TV1:
 - Either: Satellite receiver
 - Or: VCR
 - Or: DVD recorder
3. Unplug the SCART cable from the video source.
4. Plug the SCART cable of the transmitter into the SCART port of the video source.



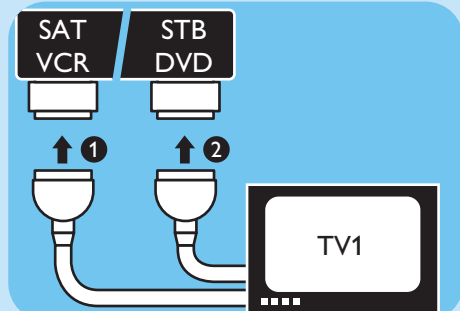
B Connect your other video source

1. Find the SCART cable from the video source that is connected to TV1:
 - Either: Set top box
 - Or: DVD player
2. Unplug the SCART cable from the video source.
3. Take the supplied SCART/RCA cable (C).
4. Plug the RCA connectors into the corresponding ports on the transmitter (A).
5. Plug the SCART connector of the SCART/RCA cable (C) into the SCART port of the video source.



C Connect TV1

1. Plug the SCART cable from TV1 into the SCART connector of the transmitter on video source 1.
2. Plug the SCART cable from TV1 into the SCART connector of the transmitter on video source 2.

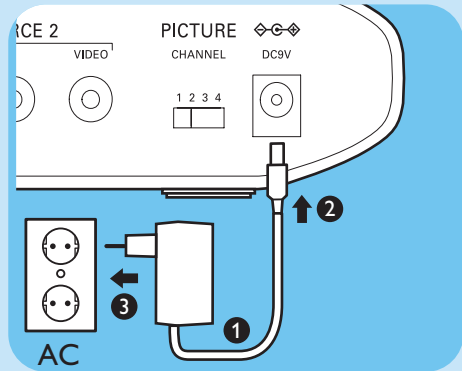


Firmly insert the SCART connectors to the ports:

1. Plug the connector straight into the port.
2. Apply some force when you insert the connector.

D Connect the power adapter

1. Take the supplied power adapter (D).
2. Plug the connector into the **DC 9V** power connector on the transmitter (A).
3. Plug the adapter into the power outlet.
> *The power light on the front comes on as red.*



E Check the operation of TV1

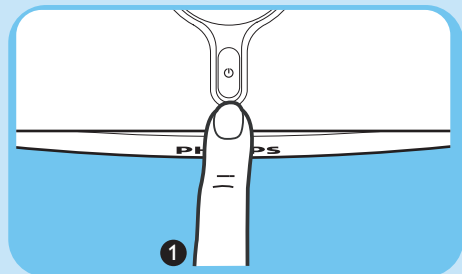
1. Switch on TV1.
2. Switch on the connected video source.
3. Select the correct SCART input on TV1.
4. Check if TV1 shows the image of the video source.
> *The transmitter is connected correctly.*

2

Connect receiver

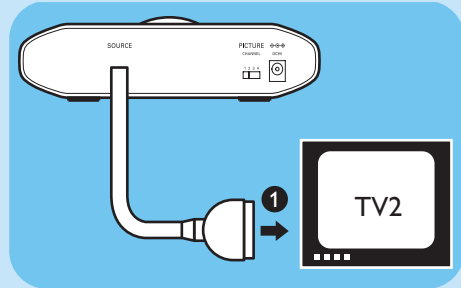
A Preparation

1. Switch on the transmitter (A).
2. Switch on the video source.
3. Take these items:
 - Receiver (B)
 - Power adapter (D)
 - Remote control of a video source.
 - This quick start guide (E)
4. Go to TV2.



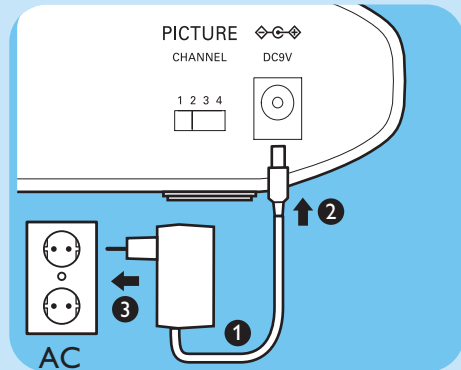
B Connect TV2

1. Plug the SCART cable of the receiver into the SCART port of TV2.



C Connect the power adapter

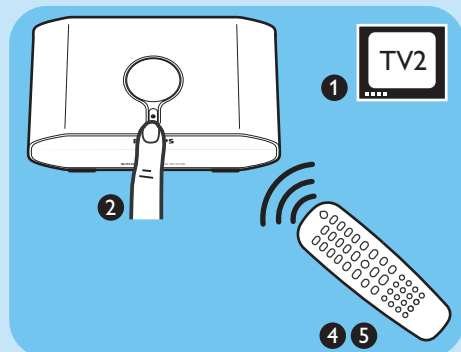
1. Take the supplied power adapter (D).
2. Plug the connector into the **DC 9V** power connector on the receiver (B).
3. Plug the adapter into the power outlet.
> *The power light on the front comes on as red.*



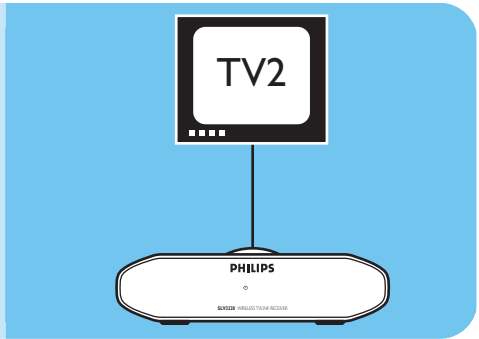
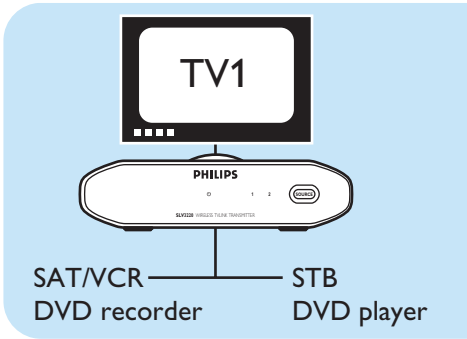
D Check the operation of TV2

1. Switch on TV2.
2. Switch on the receiver (B).
3. Select the correct SCART input on TV2.
4. Point the remote control of the video source to the receiver (B).
5. Operate the video source with its remote control.
6. Check if TV2 shows the image of the video source.

> *The receiver is connected correctly.*



Result



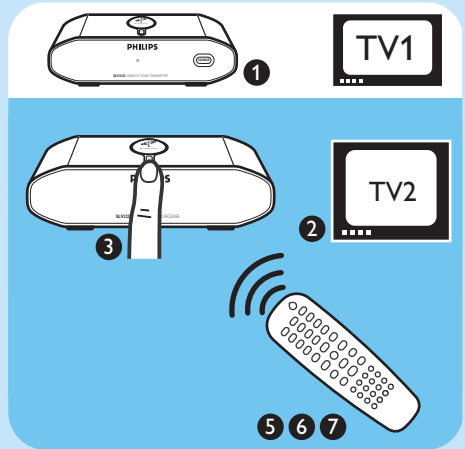
3 Enjoy

A Example: View satellite programs on TV2

Your satellite receiver needs to be connected to the transmitter (A) of the wireless TV link.

1. Switch on the transmitter (A).
2. Switch on TV2.
3. Switch on the receiver (B).
4. Select the correct SCART input on TV2.
5. Point the remote control of the satellite receiver to the receiver (B).
6. Switch on the satellite receiver.
7. Operate the satellite receiver with its remote control. Enjoy!

To view other video sources, replace 'Satellite receiver' with the name of the device used.



B View video source on TV1

1. Switch on TV1.
2. Select the correct SCART input on TV1.
3. Operate the video source as usual. Enjoy!

Troubleshooting

Problem

No image or wrong image on TV1

Tip

- Make sure video sources are connected to the transmitter (A).
- Make sure the transmitter (A) is connected to TV1.
- Make sure SCART cables are firmly inserted.
- Make sure the video source is switched on.
- Make sure the correct SCART input on TV1 is selected.

No image or wrong image on TV2

- Make sure SCART cables are firmly inserted.
- Make sure the receiver (B) is connected to TV2.
- Make sure both receiver (B) and transmitter (A) are switched on.
- Make sure the video source is switched on.
- Make sure the correct SCART input on TV2 is selected.
- Select the correct video source with SOURCE on the transmitter (A).
> See the user manual (G) page 8.
- If the video source gives proper image on TV1:
Make sure the video source gives video signal in CVBS mode.
> See its user manual
- Change the wireless channel that is used for communication.
> See the user manual (G) page 7.
- The receiver (B) is out of range of the transmitter (A).
The number of walls and ceilings in between the receiver (B) and transmitter (A) restrict the distance.

Interference in the image on TV2

- Slightly change the position of the receiver (B) or the transmitter (A).
- Change the wireless channel that is used for communication.
> See the user manual (G) page 7.
- The receiver (B) is out of range of the transmitter (A).
The number of walls and ceilings in between the receiver (B) and transmitter (A) restrict the distance.

The video sources do not respond to the remote control commands from TV2

- Point the remote control directly to the receiver (B).
- Replace the batteries of the remote controls with new ones.
- Install the remote control blaster cord (F).
> See the user manual (G) page 6.
- The maximum operating distance of the remote control is 5 m.

The image of the video source disappears on TV2

- Turn off the auto standby mode of the video source.
> See its user manual.
 - Follow the instructions to reconnect the video sources.
> See this quick start guide (E).
-



Need help?

User manual

See the user manual that came with your wireless TV link.

Online help: www.philips.com/support

Helpline

België/Belgique/Belgien	070 222 303 (€ 0.17)
Danmark	3525 8759
Deutschland	0900 1101211 (€ 0.12)
España	902 888 784 (€ 0.15)
France	08 9165 0005 (€ 0.23)
Ελλάδα	0 0800 3122 1280
Ireland	01 764 0292
Italia	899 23 45 06 (€ 0.25)
Luxemburg/Luxembourg	40 6661 6544
Nederland	0900 8407 (€ 0.20)
Norge	2270 8111
Österreich	0900 060 827 (€ 0.20)
Portugal	2 1359 1442
Schweiz/Suisse/Svizzera	0900 001 600
Suomi	0600 412 001
Sverige	08 5792 9100
UK (United Kingdom)	0906 1010 016 (£ 0.15)

Specifications are subject to change without notice.

Trademarks are the property of Koninklijke Philips Electronics N.V. or their respective owners.

2005 © Koninklijke Philips Electronics N.V. All rights reserved.

www.philips.com

QSG-SLV3220-AEN-V1.0