



Incredibly Explosive, lifelike Bass

Mix'n'Max Your Way to a louder Life

Live life to the max with the Cruz Headphones and submerge yourself in bass so rich you'll feel it deep down inside! With a simple plug'n'play design, you can now pop out and crank up the volume any time the mood hits you!

Supreme comfort

- Comfortable headband easily adjusts to every head size
- Soft, breathable fabric cushions ensure long wearing comfort

Mind-blowing sound

- 32-mm neodymium drivers deliver dynamic larger-than-life bass
- Quickly flip from music to calls via a built-in mic and remote
- Get deep down into the groove with on-ear isolating cushions

Prepare for impact

- L-shape connector enhances cable durability and lifespan
- Robust, modular design can withstand the toughest impact
- Ear cans simply pop off if excessive force is applied
- Ultra-tough, tangle-free flat cable

Philips O'Neill
Headband headphones

- O'Neill
- On-ear
- Blue and Red



SHO3305BOARD



PHILIPS

O'NEILL

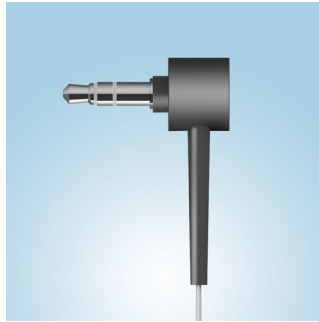
Highlights

32-mm neodymium drivers



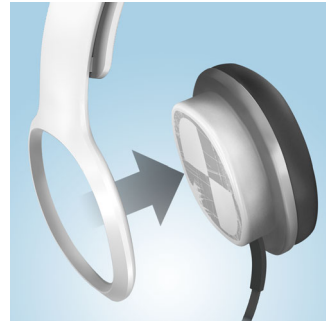
32-mm neodymium drivers deliver dynamic larger-than-life bass

L-shape connector



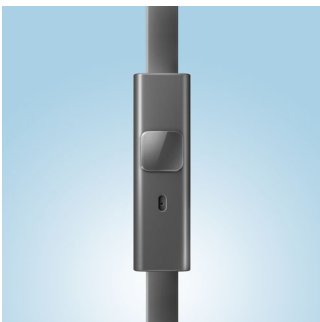
L-shape connector enhances cable durability and lifespan

Safe release cans



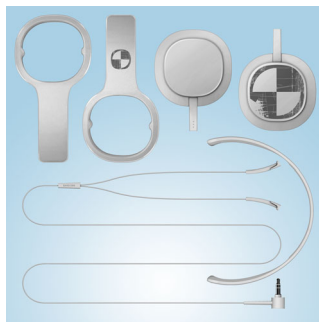
Ear cans simply pop off if excessive force is applied

Built-in mic and remote control



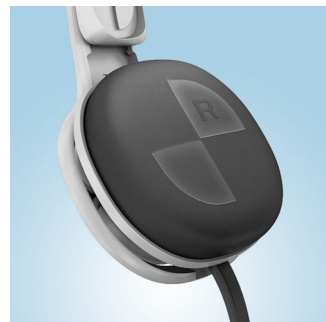
Quickly flip from music to calls via a built-in mic and remote

Modular design



Robust, modular design can withstand the toughest impact

Soft, breathable cushions



Soft, breathable fabric cushions ensure long wearing comfort

Comfy and adjustable headband



Comfortable headband easily adjusts to every head size

On-ear isolating cushions



Get deep down into the groove with on-ear isolating cushions

Tough tangle-free cable

Ultra-tough, tangle-free flat cable

Specifications

Sound

- Acoustic system: closed
- Magnet type: Neodymium
- Voice coil: Copper
- Diaphragm: PET
- Impedance: 32 ohm
- Maximum power input: 30 mW
- Sensitivity: 104 dB
- Speaker diameter: 32 mm
- Type: Dynamic
- Frequency response: 19 - 21 000 Hz

Connectivity

- Cable Connection: two-parallel, symmetric
- Cable length: 1.2 m
- Connector: 3.5 mm
- Type of cable: Copper
- Finishing of connector: Silver-plated

Outer Carton

- Gross weight: 2.028 lb
- Gross weight: 0.92 kg
- GTIN: 1 69 23410 72049 2
- Outer carton (L x W x H): 24 x 19 x 25.5 cm
- Outer carton (L x W x H): 9.4 x 7.5 x 10.0 inch
- Net weight: 0.780 lb
- Net weight: 0.354 kg

- Number of consumer packages: 3
- Tare weight: 1.248 lb
- Tare weight: 0.566 kg

Packaging dimensions

- Packaging dimensions (W x H x D):
17 x 20 x 8 cm
- Packaging dimensions (W x H x D):
6.7 x 7.9 x 3.1 inch
- EAN: 69 23410 72049 5
- Gross weight: 0.233 kg
- Gross weight: 0.514 lb
- Net weight: 0.260 lb
- Net weight: 0.118 kg
- Number of products included: 1
- Packaging type: Carton
- Tare weight: 0.115 kg
- Tare weight: 0.254 lb
- Type of shelf placement: Both

Product dimensions

- Product dimensions (W x H x D):
5.3 x 7.3 x 3.0 inch
- Product dimensions (W x H x D):
13.5 x 18.5 x 7.5 cm
- Weight: 0.118 kg
- Weight: 0.260 lb