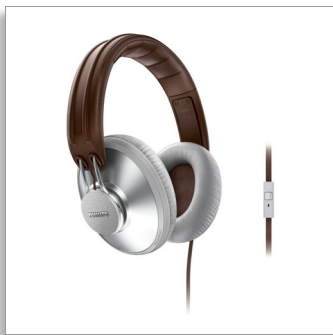




Philips  
Headphones with mic

40mm drivers/closed-back

Over-ear  
Memory foam cushions  
Single-sided flat cable



SHL5905GY

## Immerse in high precision sound

with MusicSeal to keep your music yours

Inspired by cities & savvy urbanites, the retro-mod CitiScape Uptown lets you immerse in high precision sound with MusicSeal to keep every beat to yourself. Plus, memory foam cushions & an air-quilted headband ensure comfort & perfect fit.

### Total sound immersion on the move

- Finely tuned 40mm premium drivers deliver precision sound
- MusicSeal keeps your music in and all to yourself
- Over-ear isolating cushions block out the city's noise

### Designed for comfort and ease

- Memory foam cushions keep you comfortably immersed in music
- Air-quilted headband for long-listening comfort on the move

### Stay connected to your music and friends

- Built-in microphone & volume control lets you take calls

### Supreme comfort

- Flat 1.2m anti-tangle cable keeps you kink- and knot-free

**PHILIPS**

Headphones with mic  
40mm drivers/closed-back Over-ear, Memory foam cushions, Single-sided flat cable

SHL5905GY/28

# Highlights

## Air filled quilted headband



Air-quilted headband for long-listening comfort on the move

## Built-in mic & volume control



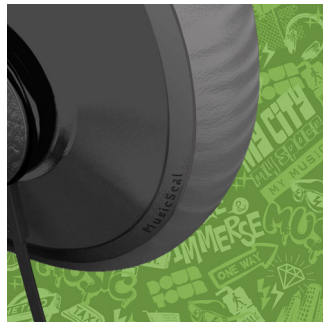
Your CitiScape headphones feature a built-in microphone and volume control so you can easily switch from listening to music to taking phone calls. It's a breeze staying connected with your music – and with the people who matter most to you.

## High precision sound



Immerse in crystal clear and richly detailed sound delivered by finely tuned premium 40mm drivers. Backed by Philips' heritage in sound excellence, your CitiScape headphones are carefully engineered to reproduce high precision sound for truly captivating music enjoyment on the move.

## MusicSeal



Whether you're listening to the gnashing guitar riffs of a funk metal band or the lilting soprano of an opera diva, MusicSeal ensures that your CitiScape headphones lets you keep your favorite music all to yourself. With double layered walls within the earshell and secure edges between the headphone cushions and housing, this innovative feature seals in every beat. At the same time, ambient noise is prevented from seeping through and disrupting your music enjoyment.

## Over-ear isolating cushions



Be part of the city's buzz but not its noise with over-the-ear sound isolating cushions. The incredibly soft ear cushions enclose the speakers around your ears to create a perfect seal. You will be able to clearly discern and enjoy all the sound details in your favorite music. Designed to alleviate pressure on your ears, you can wear your CitiScape headphones in true comfort and for long periods of time.

## Soft memory foam cushions



Ultra-soft and supple memory foam cushions of these Philips headphones hug the contours of your ears comfortably and securely to form a perfect seal. Not only is it designed to ensure the best possible fit – whatever your head shape, it also lets you immerse in music enjoyment for extended periods of time. In fact, it is so comfortable, you may even forget that you have them on.

# Specifications

## Sound

- Acoustic system: Closed
- Magnet type: Neodymium
- Voice coil: CCAW
- Diaphragm: Mylar dome
- Frequency response: 12 - 23 500 Hz
- Impedance: 32 Ohm
- Maximum power input: 30 mW
- Sensitivity: 103 dB
- Speaker diameter: 40 mm
- Type: Dynamic

## Connectivity

- Cable Connection: Two-parallel, symmetric
- Cable length: 1.2 m
- Connector: 3.5 mm stereo
- Finishing of connector: 24k Gold plated
- Type of cable: OFC
- Compatible with: iPhone®, BlackBerry®, HTC, LG, MOTOROLA

## Packaging dimensions

- Number of products included: 1
- Packaging dimensions (W x H x D):

- 19.5 x 21.5 x 9 cm
- Gross weight: 0.505 kg
- Nett weight: 0.248 kg
- Tare weight: 0.257 kg
- Packaging dimensions (W x H x D):  
7.7 x 8.5 x 3.5 inch
- Gross weight: 1.113 lb
- Nett weight: 0.546 lb
- Tare weight: 0.567 lb
- UPC: 6 09585 22225 0
- Packaging type: Box

## Outer Carton

- Number of consumer packagings: 3
- Gross weight: 1.85 kg
- Outer carton (L x W x H): 29.5 x 21.5 x 25.5 cm
- Nett weight: 0.744 kg
- Tare weight: 1.106 kg
- GTIN: 1 06 09585 22225 7
- Gross weight: 4.079 lb
- Outer carton (L x W x H): 11.6 x 8.5 x 10 inch
- Nett weight: 1.64 lb
- Tare weight: 2.439 lb



Issue date 2014-05-27

Version: 4.8.3

12 NC: 8670 000 85731  
UPC: 6 09585 22225 0

© 2014 Koninklijke Philips N.V.  
All Rights reserved.

Specifications are subject to change without notice.  
Trademarks are the property of Koninklijke Philips N.V.  
or their respective owners.

[www.philips.com](http://www.philips.com)