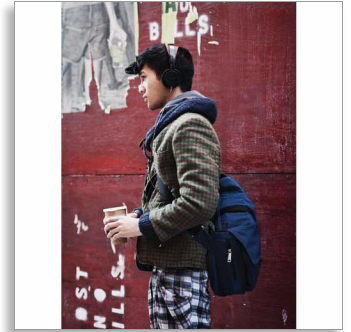




Philips  
CitiScape Headband  
Headphones

- Shibuya
- On-ear
- Pink



SHL5205PK



## Powered by deep, dynamic bass with sound isolating cushions

Japanese pop culture and chic simplicity lend iconic flair to the CitiScape Shibuya Headphone. Lightweight breathable headband with auto-fitting noise isolating cushions for perfect fit and comfort while you immerse in powerful bass sounds.

### Total immersion

- Powerful 40mm drivers deliver deep and dynamic bass
- Noise isolating ear caps to block out the city's noise
- On-ear isolating cushions block out the city's noise

### Supreme comfort

- Soft foam cushions for music enjoyment in true comfort
- Soft breathable headband for long-listening comfort
- Flat 1.2m anti-tangle cable keeps you kink- and knot-free

### Music and calls

- Switch from music to phone calls with built-in microphone

# PHILIPS

# Highlights

## Deep and dynamic bass



Get into your groove with music that packs a solid punch, thanks to powerful 40mm drivers that deliver deep and dynamic bass. With Philips' heritage in sound excellence, you can trust that your CitiScape headphones will ensure a vividly moving sound experience – wherever you go.

## Flat anti-tangle cable



Say goodbye to wrestling with knotted and messy cables in and out of your bag. Your CitiScape headphones' flat 1.2m anti-tangle cable stays kink- and knot-free – always. Now you can focus on what matters most, like enjoying your music with ease wherever you go.

## Soft breathable headband



The soft and lightweight headband is perforated in order to release heat build-up when you're wearing your CitiScape headphones.

## Soft foam cushions



Ultra-soft and supple cushions hug the contours of your ears comfortably and securely to form a perfect seal. Not only is it designed to ensure the best possible fit – whatever your head shape, it also lets you immerse in music enjoyment for extended periods of time. In fact, it is so comfortable, you may even forget that you have them on.

## Noise isolating ear caps

Noise isolating ear caps to block out the city's noise

## On-ear isolating cushions



Be part of the city's buzz but not its noise with on-ear sound isolating cushions. The incredibly soft ear cushions enclose the speakers around your ears for long-lasting wearing comfort. You will be able to clearly discern and enjoy all the sound details in your favorite music.

## Built-in microphone



Your CitiScape headphones feature a built-in microphone so you can easily switch from listening to music to taking phone calls. It's a breeze staying connected with your music – and with the people who matter most to you.

# Specifications

## Sound

- Acoustic system: Closed
- Magnet type: Neodymium
- Voice coil: CCAW
- Diaphragm: Mylar dome
- Frequency response: 10 - 20 000 Hz
- Impedance: 32 Ohm
- Maximum power input: 30 mW
- Sensitivity: 103 dB
- Speaker diameter: 40 mm
- Type: Dynamic

## Connectivity

- Cable Connection: Two-parallel, symmetric
- Cable length: 1.2 m
- Connector: 3.5 mm stereo
- Finishing of connector: 24k Gold plated
- Type of cable: OFC
- Compatible with: iPhone®, BlackBerry®, HTC, LG, MOTOROLA, Nokia, Palm®, SAMSUNG, Sony Ericsson

## Packaging dimensions

- Number of products included: 1
- EAN: 69 23410 71341 1
- Packaging dimensions (W x H x D): 19.5 x 20 x 8 cm
- Gross weight: 0.4 kg
- Nett weight: 0.176 kg
- Tare weight: 0.224 kg
- Packaging type: Blister
- Type of shelf placement: Both

## Outer Carton

- Number of consumer packagings: 3
- Gross weight: 1.502 kg
- Outer carton (L x W x H): 26.5 x 21.5 x 24 cm
- Nett weight: 0.528 kg
- Tare weight: 0.974 kg
- GTIN: 1 69 23410 71341 8

## Product dimensions

- Product dimensions (W x H x D): 17.5 x 18.5 x 7.5 cm
- Weight: 0.176 kg



Issue date 2013-05-21

Version: 3.7.3

12 NC: 8670 000 85714  
EAN: 69 23410 71341 1

© 2013 Koninklijke Philips N.V.  
All Rights reserved.

Specifications are subject to change without notice.  
Trademarks are the property of Koninklijke Philips N.V.  
or their respective owners.

[www.philips.com](http://www.philips.com)