

Always there to help you

Register your product and get support at
www.philips.com/support



SHL3850NC



User manual

PHILIPS

Contents

1	Important safety instructions	2
	Hearing Safety	2
	General information	2

2	Your noise canceling on-ear headphones	3
	What's in the box	3
	Overview of your noise canceling headphones	3

3	Get started	4
	Replace the battery (not supplied)	4

4	Use your headphones	5
	Enable ANC	5
	ANC LED indicator status (left side of headphones)	5
	Wear your headphones	5

5	Technical data	6
----------	-----------------------	----------

6	Notice	7
	Disposal of your old product and battery	7

1 Important safety instructions

Hearing Safety



Danger

- To avoid hearing damage, limit the time you use headphones at high volume and set the volume to a safe level. The louder the volume, the shorter the safe listening time is.

Be sure to observe the following guidelines when using your headset.

- Listen at reasonable volumes for reasonable periods of time.
- Be careful not to adjust the volume continuously upwards as your hearing adapts.
- Do not turn up the volume so high that you can't hear what's around you.
- You should use caution or temporarily discontinue use in potentially hazardous situations.
- Excessive sound pressure from earphones and headphones can cause hearing loss.
- Using headphones with both ears covered while driving is not recommended and may be illegal in some areas while driving.
- For your safety, avoid distractions from music or phone calls while in traffic or other potentially dangerous environments.



Caution

- Do not expose headphones to excessive heat.
- Do not drop your headphones.
- Headphones shall not be exposed to dripping or splashing.
- Do not allow your headphones to be submerged in water.
- Do not use any cleaning agents containing alcohol, ammonia, benzene, or abrasives.
- If cleaning is required use a soft cloth, if necessary dampened with a minimum amount of water or diluted mild soap, to clean the product.
- The battery shall not be exposed to excessive heat such as sunshine, fire or the like.
- Danger of explosion if battery is incorrectly replaced. Replace only with the same or equivalent type.
- Use only the Philips airline adapter to connect the headphones to airplane seat jacks. Do not use other airline adapters as they might not result in correct response or even result in personal injury such as burns or property damage due to overheating. Remove the adapter and disconnect immediately if you experience warming or loss of audio.
- Do not insert any plug into the power jack of the airplane seat because it may damage the headphones and result in personal injury.
- Never use your headphones when you are operating a motor vehicle, riding a bicycle, running or walking in traffic areas. It is dangerous and illegal in many places.

About operating and storage temperatures and humidity

- Operate or store in a place where temperature is between -15°C (5°F) and 55°C (131°F) (up to 90% relative humidity).
- Battery life may be shorter in high or low temperature conditions.

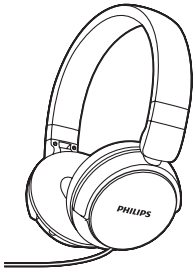
General information

To avoid damage or malfunction:

2 Your noise canceling on-ear headphones

Congratulations on your purchase, and welcome to Philips! To fully benefit from the support that Philips offers, register your product at www.philips.com/welcome.

What's in the box

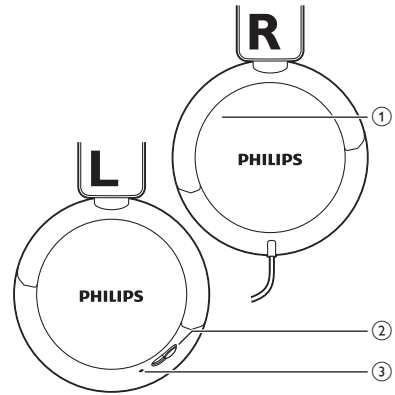


Philips noise canceling on-ear headphones
SHL3850NC



Quick start guide

Overview of your noise canceling headphones

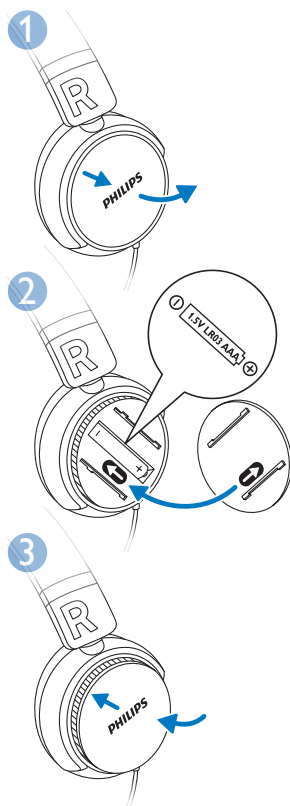


- ① AAA battery compartment
- ② Active noise canceling (ANC) on/off button
- ③ Active noise canceling (ANC) LED indicator

3 Get started

Replace the battery (not supplied)

When the battery level is low, the green LED will flash. See the following instruction to



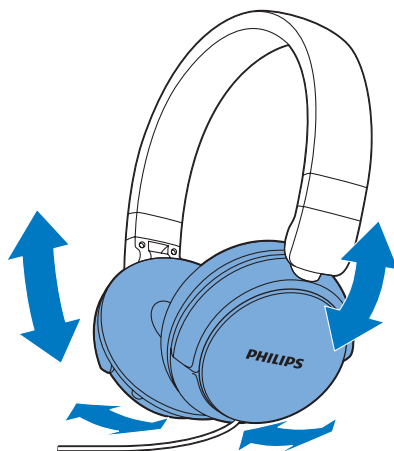
4 Use your headphones

Enable ANC

- Slide the ANC on/off button to **NC** to enable noise cancellation.
- Slide the ANC on/off button to **OFF** to disable noise cancellation.

Tip

- When the ANC function is not required, switch off the ANC on/off button to continue your call or listening to music.



Tip

- After use, twist the headphones for easy storage.

ANC LED indicator status (left side of headphones)

Headphones status	Indicator
Active noise cancellation is on.	The green LED is on.
The battery level is low.	The green LED flashes.
Active noise cancellation is off.	The green LED is off.

Wear your headphones

Adjust the headband to fit your head.

5 Technical data

- Active noise cancelation: Feedback (2 microphones)
- ANC play time: 40 hours
- Music and talk time: Unlimited
- Alkaline AAA battery × 1
- Low battery warning: available



Note

- Specifications are subject to change without notice.

6 Notice

Disposal of your old product and battery



Your product is designed and manufactured with high quality materials and components, which can be recycled and reused.



This symbol on a product means that the product is covered by European Directive 2012/19/EU.



This symbol means that the product contains batteries covered by European Directive 2013/56/EU which cannot be disposed of with normal household waste.

Inform yourself about the local separate collection system for electrical and electronic products and batteries. Follow local rules and never dispose of the product and batteries with normal household waste. Correct disposal of old products and batteries helps prevent negative consequences for the environment and human health.

Removing the disposable batteries

To remove the disposable batteries, see section 'Replace the battery'.

Environmental information

All unnecessary packaging has been omitted. We have tried to make the packaging easy to separate into three materials: cardboard (box), polystyrene foam (buffer) and polyethylene (bags, protective foam sheet.)

Your system consists of materials which can be recycled and reused if disassembled by

a specialized company. Please observe the local regulations regarding the disposal of packaging materials, exhausted batteries and old equipment.



2016 © Gibson Innovations Limited.
All rights reserved.

This product has been manufactured by, and is sold under the responsibility of Gibson Innovations Ltd., and Gibson Innovations Ltd. is the warrantor in relation to this product. Philips and the Philips Shield Emblem are registered trademarks of Koninklijke Philips N.V. and are used under license from Koninklijke Philips N.V.

UM_SHL3850NC_00_EN_V2.0
wk1619

