



Philips  
Headphones

DJ monitor style  
Black



SHL3300



## Deep bass, defined sound

With DJ monitoring style

Engineered for uncompromised audio delivery, the SHL3300 features 40mm neodymium drivers and is equipped for 2200mW power - offering defined bass and precision sound with no distortion. Auto-return earshells rotate 165° for easy monitoring.

### The perfect listening experience

- 2200mW high power handling: no distortion even at high volume
- 40 mm neodymium speaker drivers for deep and defined bass
- Closed-back system blocks out ambient noise
- Single-sided DJ monitoring style for easy tuning in & out

### Comfortable for long use

- Adjustable earshells and headband fits the shape of any head
- Soft 95mm diameter cushions for extended comfort
- Wide, lightweight headband with EVA foam for comfortable fit

### Convenient and durable

- 1.5m coiled cable for extra flexibility and durability
- Auto-return earpieces restores original positions after use
- Compact foldable design for easy storage on the go
- Tested with 8,000 cable bends for assured durability
- Earpieces swivel 165° for monitoring and added flexibility

# PHILIPS

Headphones  
DJ monitor style Black

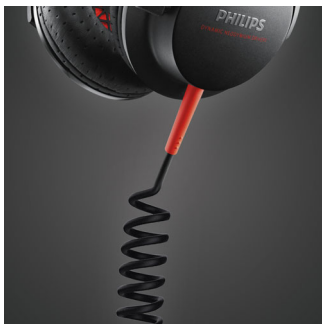
# Highlights

## Adjustable earshells headband



Adjustable earshells and headband fits the shape of any head

## 1.5m coiled cable

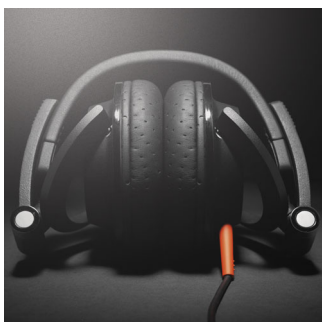


Enjoy greater freedom of movement with a 1.5m long coiled cable. The coil also reduces the strain on parts caused by pulling, while providing the extra length without the mess of entangled cables.

## Auto-return earpieces

Auto-return earpieces restores original positions after use

## Compact foldable design



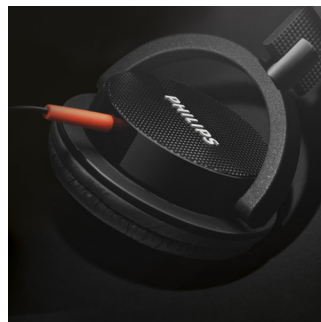
Made to give you the best experience on the go, the DJ monitoring style headphones can be folded away for perfect portability and easy

storage. Clever design and careful selection of components, like the well-built hinges, allow the headphone parts to be maneuvered with ease. The SHL3100 can be folded flat, while the higher end SHL3200 and 3300 can be folded into more compact forms.

## Durable cable

Engineered for robustness and performance, these headphones promise sound experiences that wouldn't let you down. Cable systems are developed to withstand strong tugging and repeated bending – stresses beyond those encountered in daily use. To ensure this, all cable designs undergo a rigorous test of 8,000 bends.

## Earpieces swivel 165°



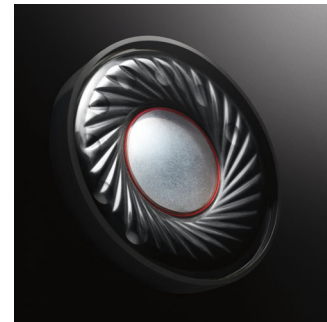
Designed with the professional DJ in mind, the earpieces on these headphones can each rotate 165° – for convenient one-ear listening while track mixing. The swivel can also be put to good use even in more casual listening, when temporary attention has to be paid to outside sounds.

## 2200mW high power handling

High power handling hands you high performance – no matter what the volume, no matter what the source. Listen to all your music from MP3 players, smartphones, home audio devices and mixing boards. Even at high volumes, or with high audio input power, delivery is clear and distortion-free.

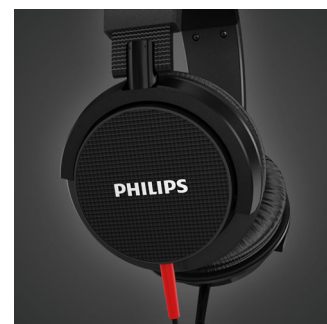
SHL3300/00

## 40mm neodymium drivers



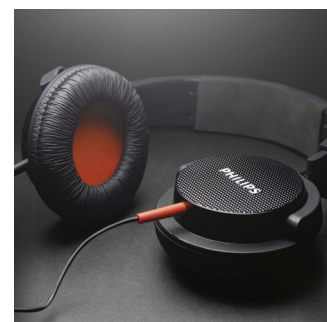
Neodymium drivers boast of an outstanding frequency response that imparts crisp high tones, and bass that is effortlessly extended and defined. Sound separation is also remarkably clear, letting you hear each note at precisely the right moment – for a professional touch to track mixing, or for immersive enjoyment of favorites on the go.

## Closed-back system



Closed-back system blocks out ambient noise

## DJ monitoring style



Single-sided DJ monitoring style for easy tuning in & out

# Specifications

## Sound

- Acoustic system: closed
- Frequency response: 18 - 25,000 Hz
- Impedance: 32 Ohm
- Magnet type: Neodymium
- Maximum power input: 2200 mW
- Sensitivity: 108 dB
- Speaker diameter: 40 mm

## Connectivity

- Cable Connection: one-sided

## Packaging dimensions

- EAN: 69 23410 71820 1
- Number of products included: 1
- Packaging type: Carton
- Packaging dimensions (W x H x D):  
19.5 x 24.5 x 10.5 cm

- Gross weight: 0.4345 kg
- Nett weight: 0.3165 kg
- Tare weight: 0.118 kg
- Type of shelf placement: Both

## Outer Carton

- GTIN: 1 69 23410 71820 8
- Number of consumer packagings: 6
- Gross weight: 3.08 kg
- Outer carton (L x W x H): 63 x 21 x 27.5 cm
- Nett weight: 1.899 kg
- Tare weight: 1.181 kg

## Product dimensions

- Product dimensions (W x H x D):  
17.5 x 21 x 9.5 cm
- Weight: 0.3165 kg



Issue date 2014-01-27

Version: 4.3.5

12 NC: 8670 000 96617  
EAN: 69 23410 71820 1

© 2014 Koninklijke Philips N.V.  
All Rights reserved.

Specifications are subject to change without notice.  
Trademarks are the property of Koninklijke Philips N.V.  
or their respective owners.

[www.philips.com](http://www.philips.com)