



Philips  
Headband headphones

- DJ monitor style
- White

SHL3105WT



## Dynamic solid bass

With DJ monitoring style

Get the boom in music wherever you go. The SHL3105 features 40mm neodymium drivers for rich, deep bass. Equipped for 1500mW power, the headphones deliver even high volumes with no distortion. Each earshell swivels 165° for easy monitoring.

### The perfect listening experience

- 1500mW power handling: no distortion even at high volume
- 40mm neodymium speaker drivers for impressive & punchy bass
- Closed-back system blocks out ambient noise
- Hear what's going on and listen to your DJ style headphone

### Comfortable for long use

- Adjustable earshells and headband fits the shape of any head
- Soft 85mm diameter cushions for extended comfort
- Wide, lightweight headband with EVA foam for comfortable fit

### Convenient and durable

- 1.2m cable for freedom of music enjoyment on the go
- Tested with 8,000 cable bends for assured durability
- Earpieces swivel 165° for monitoring and added flexibility
- Flat foldable for easy storage on the go

# PHILIPS

Headband headphones  
DJ monitor style White

# Highlights

## Adjustable earshells headband



Adjustable earshells and headband fits the shape of any head

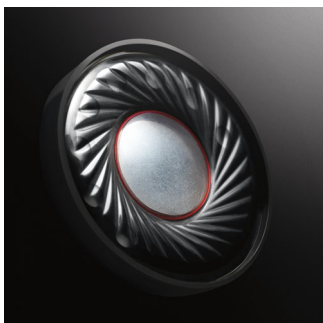
## 1.2m cable

A 1.2m long cable lets budding DJs bring their set outdoors. Now you can mix tracks and hold parties wherever you want.

## 1500mW high power handling

High power handling hands you high performance – no matter what the volume, no matter what the source. Listen to all your music from MP3 players, smartphones, home audio devices and mixing boards. Even at high volumes, or with high audio input power, delivery is clear and distortion-free.

## 40mm neodymium drivers



Neodymium drivers boast of an outstanding frequency response that imparts crisp high tones, and bass that is effortlessly extended and defined. Sound separation is also remarkably clear, letting you hear each note at precisely the right moment – for a professional touch to track mixing, or for immersive enjoyment of favorites on the go.

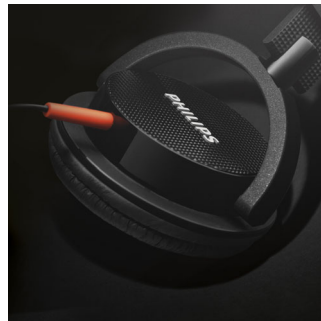
## DJ monitoring style

It is a reversible ear-shell for listening with one ear

## Durable cable

Engineered for robustness and performance, these headphones promise sound experiences that wouldn't let you down. Cable systems are developed to withstand strong tugging and repeated bending – stresses beyond those encountered in daily use. To ensure this, all cable designs undergo a rigorous test of 8,000 bends.

## Earpieces swivel 165°



Designed with the professional DJ in mind, the earpieces on these headphones can each rotate 165° – for convenient one-ear listening while track mixing. The swivel can also be put to good use even in more casual listening, when temporary attention has to be paid to outside sounds.

## Flat foldable design

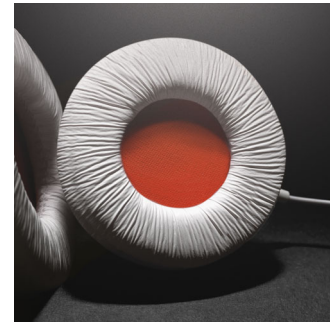


Made to give you the best experience on the go, the DJ monitoring style headphones can be folded away for perfect portability and easy storage. Clever design and careful selection of components, like the well-built hinges, allow the headphone parts to be maneuvered with

SHL3105WT/00

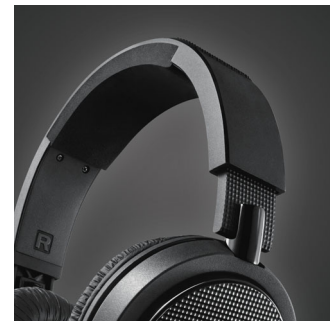
ease. The SHL3100 can be folded flat, while the higher end SHL3200 and 3300 can be folded into more compact forms.

## Soft 85mm diameter cushions



Indulge in great sound no matter where you are. The 85mm diameter soft cushions create perfect sealing between your ears and the environment, providing excellent noise isolation and enhancing bass notes. Whether you are mixing tracks at a lively party, or simply enjoying favorites on your commute, the earshell cushions ensure you get the best out of your music.

## Wide, lightweight headband



Everything about these headphones spells comfort – from the ergonomic design to the lightweight construction and use of superior materials. Even in extended use, the exceptional comfort lets you enjoy your music to the fullest.

# Specifications

## Sound

- Acoustic system: closed
- Frequency response: 18 - 20,000 Hz
- Impedance: 32 Ohm
- Magnet type: Neodymium
- Maximum power input: 1500 mW
- Sensitivity: 107 dB
- Speaker diameter: 40 mm

## Connectivity

- Cable Connection: two-sided

## Product dimensions

- Product dimensions (W x H x D):  
17 x 4 x 18.5 cm
- Product dimensions (W x H x D):  
6.7 x 1.6 x 7.3 inch
- Weight: 0.1669 kg
- Weight: 0.368 lb

## Packaging dimensions

- Packaging dimensions (W x H x D):  
4.5 x 25.4 x 19.9 cm
- Packaging dimensions (W x H x D):

- 1.8 x 10 x 7.8 inch
- Nett weight: 0.167 kg
- Nett weight: 0.368 lb
- Gross weight: 0.255 kg
- Gross weight: 0.562 lb
- Tare weight: 0.088 kg
- Tare weight: 0.194 lb
- EAN: 69 23410 71933 8
- Type of shelf placement: Both
- Number of products included: 1
- Packaging type: Carton

## Outer Carton

- Outer carton (L x W x H): 30.7 x 21.4 x 28.8 cm
- Outer carton (L x W x H): 12.1 x 8.4 x 11.3 inch
- Nett weight: 1.002 kg
- Nett weight: 2.209 lb
- Gross weight: 1.87 kg
- Gross weight: 4.123 lb
- Tare weight: 0.868 kg
- Tare weight: 1.914 lb
- GTIN: 1 69 23410 71933 5
- Number of consumer packagings: 6



Issue date 2013-09-06

Version: 4.5.4

12 NC: 8670 000 97432  
EAN: 69 23410 71933 8

© 2013 Koninklijke Philips N.V.  
All Rights reserved.

Specifications are subject to change without notice.  
Trademarks are the property of Koninklijke Philips N.V.  
or their respective owners.

[www.philips.com](http://www.philips.com)