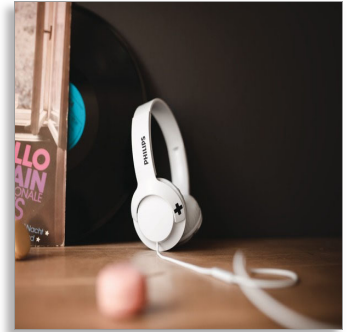




Philips
Headphones with mic

32mm drivers/closed-back

On-ear
Soft ear cushions
Flat folding



SHL3075WT



Feel it. BASS+

Philips BASS+ headphones bring big, bold bass back to your music. Packing powerful, punchy bass into a sleek, compact package, these headphones are built for those who need more bass in their beats without any extra bulk.

More bass

- Big, bold bass you can feel
- 32 mm speaker drivers
- Great sound isolation for better listening experience

True comfort

- Designed for optimal fit
- Soft ear cushions for long-wearing comfort

Sleek design

- Flat folding design for easy portability
- An easy-to-use remote control

PHILIPS

Headphones with mic
32mm drivers/closed-back On-ear, Soft ear cushions, Flat folding

SHL3075WT/00

Highlights

32 mm drivers



BASS+ headphones feature 32mm speaker drivers that produce big, pumping bass.

Adjustable fit



Designed for optimal fit, BASS+ headphones feature swiveling earshells and an adjustable headband to ensure a great fit for all wearers.

Big, bold bass



This is big, powerful bass that lets you really feel the beat. Don't let the sleek design fool

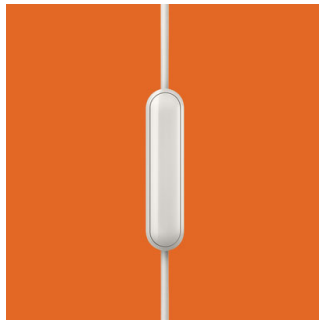
you – specially tuned drivers and bass vents produce ultra-low end frequencies to create a unique BASS+ sound signature.

Flat folding



With their flat folding design, BASS+ headphones are easy to fold and store away, making them your ideal travel companion.

Handsfree calls



An easy-to-use remote control allows you to play or pause tracks and answer calls with a simple push of a button.

Soft cushions



Soft, breathable ear cushions provide great comfort over long listening sessions.

Sound isolation



With a closed acoustic design, BASS+ headphones block out ambient noise to create improved sound isolation for a better listening experience.

Specifications

Sound

- Acoustic system: Closed
- Magnet type: NdFeB
- Frequency response: 9 - 23 000 Hz
- Impedance: 32 Ohm
- Speaker diameter: 32 mm
- Maximum power input: 40 mW
- Diaphragm: PET
- Sensitivity: 103 dB
- Type: dynamic

Connectivity

- Connector: 3.5 mm
- Microphone: Built-in microphone
- Cable length: 1.2 m

Design

- Color: White

Product dimensions

- Product dimensions (W x H x D):
13.5 x 18.5 x 4 cm
- Product dimensions (W x H x D):
5.3 x 7.3 x 1.6 inch
- Weight: 0.132 kg
- Weight: 0.291 lb

Packaging dimensions

- Number of products included: 1
- Packaging dimensions (W x H x D):
19.5 x 22.5 x 4.8 cm
- Packaging dimensions (W x H x D):
7.7 x 8.9 x 1.9 inch
- Gross weight: 0.241 kg
- Nett weight: 0.132 kg
- Tare weight: 0.109 kg
- Gross weight: 0.531 lb
- Nett weight: 0.291 lb
- Tare weight: 0.240 lb
- EAN: 69 51613 99163 3
- Packaging type: Carton
- Type of shelf placement: Both

Outer Carton

- Number of consumer packagings: 3
- Outer carton (L x W x H): 21.2 x 16.5 x 24 cm
- Outer carton (L x W x H): 8.3 x 6.5 x 9.4 inch
- Gross weight: 0.913 kg
- Nett weight: 0.396 kg
- Tare weight: 0.517 kg
- Gross weight: 2.013 lb
- Nett weight: 0.873 lb
- Tare weight: 1.140 lb
- GTIN: 1 69 51613 99163 0



Issue date 2021-01-16

Version: 12.3.9

12 NC: 8670 001 42699
EAN: 69 51613 99163 3

© 2021 Koninklijke Philips N.V.
All Rights reserved.

Specifications are subject to change without notice.
Trademarks are the property of Koninklijke Philips N.V.
or their respective owners.

www.philips.com