



Philips
Headphones

DJ monitor style
White



SHL3050WT



Powerful sound

With DJ monitoring style

This Philips SHL3050 headphone provides you powerful sound and bass. Designed together with the rotational soft cushioned earshells, you will get a perfect listening experience on the go.

Perfect listening experience

- 32mm speaker driver delivers powerful and dynamic sound
- Closed type acoustic provide good sound isolation

Comfortable for long use

- Adjustable earshells and headband fits the shape of any head
- Soft ear cushions for comfortable, long listening sessions

Convenience

- A 1.2m long cable that is ideal for outdoor use
- Flat and compact foldable design for easy storage on the go

PHILIPS

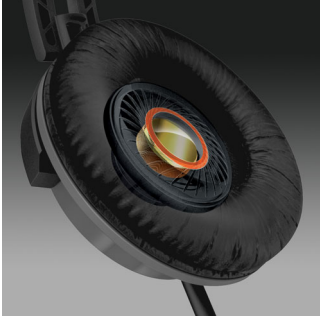
Headphones
DJ monitor style White

Highlights

1.2m cable

The ideal cable length to give you the freedom to put your audio device where you want.

32mm speaker drivers



32mm speaker driver delivers powerful and dynamic sound

Adjustable earshells headband



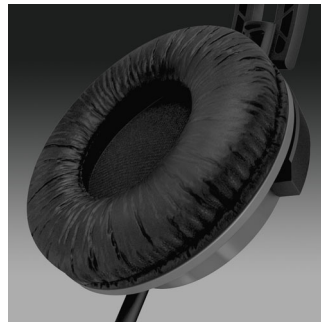
Adjustable earshells and headband fits the shape of any head

Compact & flat foldable design



Designed to give you the best experience on the go, the DJ monitoring style headphones can be easily folded away for perfect portability and storage. Its clever design features careful selection of components, like well-built hinges, that allow the headphone parts to be maneuvered with ease. The SHL3050 can be folded flat or inwards, for a compact fit on the go.

Soft, comfortable ear cushions



Soft ear cushions for comfortable, long listening sessions

SHL3050WT/00

Specifications

Sound

- Acoustic system: closed
- Frequency response: 20 - 20,000 Hz
- Impedance: 24 Ohm
- Magnet type: Neodymium
- Maximum power input: 1000 mW
- Sensitivity: 106 dB
- Speaker diameter: 32 mm

Design

- Color: White

Connectivity

- Cable Connection: two-sided
- Cable length: 1.2 m
- Connector: 3.5 mm

Outer Carton

- Gross weight: 1.715 kg
- GTIN: 1 69 23410 72482 7
- Outer carton (L x W x H): 33.5 x 22.5 x 27.9 cm
- Nett weight: 0.843 kg
- Number of consumer packagings: 6
- Tare weight: 0.872 kg

Product dimensions

- Product dimensions (W x H x D):
4 x 18.5 x 15.2 cm
- Weight: 0.14 kg

Packaging dimensions

- EAN: 69 23410 72482 0
- Packaging dimensions (W x H x D):
19.95 x 25.4 x 5 cm
- Gross weight: 0.2285 kg
- Nett weight: 0.1405 kg
- Number of products included: 1
- Packaging type: Carton
- Tare weight: 0.088 kg
- Type of shelf placement: Both



Issue date 2016-07-15

Version: 2.0.3

12 NC: 8670 001 08982
EAN: 69 23410 72482 0

© 2016 Koninklijke Philips N.V.
All Rights reserved.

Specifications are subject to change without notice.
Trademarks are the property of Koninklijke Philips N.V.
or their respective owners.

www.philips.com