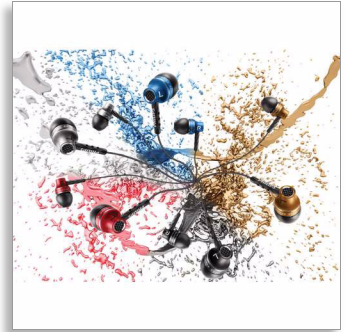




Philips
In-Ear Headphones

8.6-mm drivers/semi-closed back
In-ear



SHE9100SL



Precision sound

with solid metal housing

The Philips SHE9100 headphones boast premium drivers and precision-crafted metal housing for detailed yet pure sound. Oval sound tubes and a choice of 3 ear tips ensure comfort and fit.

Enjoy quality sound

- Fine-tuned neodymium drivers for high-frequency clarity
- Sturdy aluminium housing prevents vibration for sound clarity

Ultimate wearing comfort

- Curved housing and oval sound tubes for ergonomic comfort
- Silicone caps in choice of three sizes for customised fit

Always ready to go

- Anti-tangle slider keeps your cables together neatly
- Durable Flexi-grip for strong headphone-to-cable connection



PHILIPS

Highlights

Aluminium housing



The headphone's housing is crafted from sturdy aluminium, which prevents vibration for the purest sound performance. In addition, it protects the earphones from the wear and tear of everyday use.

Anti-tangle slider



The smart anti-tangle slider helps you easily keep the two earpiece cables neatly together, simply by gliding it up. No more hassles with tangles or knots!

Durable Flexi-grip connection

This soft yet durable and flexible connector between the earphone and cable helps protect against potential damage from repeated bending.

Finely tuned neodymium driver



Neodymium is the ideal material for producing a strong magnetic field for greater sensitivity in a voice coil, better bass response and higher overall sound quality. It features re-engineered 8.6-mm neodymium drivers that are responsive to high frequencies and ensure pure sound clarity.

Oval sound tubes

Your in-ear headphones are precisely designed to fit any ear. Their ergonomic oval sound tube and curved architecture ensure an optimised, secure and comfortable fit – always.

Silicone caps in three sizes



Your in-ear headphones come with a choice of 3 ear caps – from small to large – so you can select the perfect fit for your ears.

Specifications

Design

- Colour: Silver

Sound

- Acoustic system: Semi-closed
- Diaphragm: Mylar dome
- Impedance: 16 Ohm
- Magnet type: Neodymium
- Voice coil: Copper
- Sensitivity: 108 dB
- Speaker diameter: 8.6 mm
- Maximum power input: 30 mW
- Frequency response: 7–25,000 Hz
- Type: dynamic

Connectivity

- Connector: 3.5 mm stereo
- Type of cable: OFC
- Cable Connection: two-parallel, symmetric
- Cable length: 1.2 m
- Finishing of connector: Gold-plated

Inner Carton

- Gross weight: 0.172 kg
- GTIN: 2 69 25970 70323 3
- Inner carton (L x W x H): 18 x 8.2 x 10.5 cm
- Net weight: 0.0375 kg
- Number of consumer packages: 3
- Tare weight: 0.1345 kg

Outer Carton

- Gross weight: 1.655 kg
- GTIN: 1 69 25970 70323 6
- Outer carton (L x W x H): 38 x 18.1 x 24.8 cm
- Net weight: 0.3 kg
- Number of consumer packages: 24
- Tare weight: 1.355 kg

Packaging dimensions

- Packaging dimensions (W x H x D): 9.5 x 17.5 x 2.5 cm
- EAN: 69 25970 70323 9
- Gross weight: 0.0465 kg
- Net weight: 0.0125 kg
- Number of products included: 1
- Packaging type: Carton
- Tare weight: 0.034 kg
- Type of shelf placement: Both

Product dimensions

- Product dimensions (W x H x D): 3 x 8 x 3 cm
- Weight: 0.0125 kg



Issue date 2017-09-22

Version: 3.1.7

12 NC: 8670 001 24845
EAN: 69 25970 70323 9

© 2017 Koninklijke Philips N.V.
All Rights reserved.

Specifications are subject to change without notice.
Trademarks are the property of Koninklijke Philips N.V.
or their respective owners.

www.philips.com