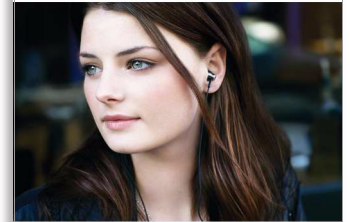


Philips In-Ear Headset

• Black



SHE8005



Pump up the bass

For your mobile phone with volume control

SHE8005/00 headphones with tiny, extra-quality speakers that deliver deep bass, and crystal clear sound. An integrated cable relief withstands pulling for durability, non-slip grip for easy fit. Extra-soft hybrid silicon caps for comfort.

Designed around you

- In-line remote for volume and call control
- Sensitive and sleek mic for picking up your voice clearly
- Extra 3.5mm plug for Nokia, Sony Ericsson, Samsung

Enjoy quality sound

- Turbo bass air vents for deepest and richest bass
- Angled Acoustic Pipe channels directional and precise sound
- Exceptional noise isolation for quality sound at low volume

Ultimate wearing comfort

- Ergonomic Angled Acoustic design ensures a natural fit
- Ultra-soft silicon caps sit comfortably in your ears

Always ready to go

- Anti-tangle slider
- A 1.2m long cable that is ideal for outdoor use
- Durable Flexi-Grip makes a strong flexible connection

PHILIPS

In-Ear Headset
Black

Highlights

In-line vol and call control



Want to change the volume? Accept or reject a call? The remote features volume and call controls. With this headset control is at your fingertips!

Sensitive and sleek microphone

Sensitive and sleek microphone for picking up your voice clearly

Extra 3.5mm connector

Extra 3.5mm stereo connector for Nokia, Sony Ericsson and Samsung

For deepest and richest bass



Turbo Bass air vents allow air movement for high-fidelity reproduction of the deepest and richest bass.

For most directional sound

Angled Acoustic Pipe is designed according to the curvature of the human ear canal so that

soundwaves from the speaker are directed precisely to your ear drum with the highest definition

For best sound at low volume

You don't have to turn up the volume in noisy places anymore. Angled Acoustic Pipe and the perfectly sealing earbuds cut off background noise significantly, delivering the same quality sound at lower volume and a longer battery life.

Ear fitting design

The design superiority of a slight 15-degree tilt in the Angled Acoustic model based on the anatomy of the human ear achieves a natural fit and supreme comfort.

3-size ultra-soft silicon caps



The 3 sizes of ultra-soft silicon caps of these Philips earphones sit comfortably in your ears without adding pressure to them whilst blocking out unwanted noise.

SHE8005/00

Anti-tangle slider

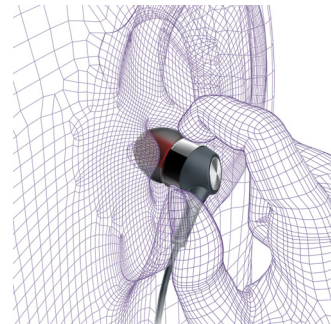


When storing your headphones there is a risk that the cables tangle if not stored carefully. This makes it a hassle to store the headphones and get them ready for listening. Simply slide the anti-tangle slider towards the earpieces to keep the two earpiece cables neatly together, and to minimize the risk of the cables tangling.

1.2m cable

The ideal cable length to give you the freedom to put your audio device where you want.

Flexi-grip design



The soft flexi-grip material that the body of the headphone is sheathed in enhances its performance and extends its durability. It protects the cable connection from damage that otherwise could occur due to repeated bending of the headphone body from frequent contact with the user's fingertips when being put on and removed.

Specifications

Product dimensions

- Product dimensions (W x H x D):
2,15 x 2,2 x 1,2 cm
- Product dimensions (W x H x D):
0,8 x 0,9 x 0,5 inch
- Weight: 0,014 kg
- Weight: 0,031 lb

Sound

- Acoustic system: Closed
- Diaphragm: Mylar dome
- Frequency response: 10 - 23 500 Hz
- Impedance: 16 Ohm
- Magnet type: Neodymium
- Type: Dynamic
- Voice coil: CCAW
- Sensitivity: 100 dB
- Speaker diameter: 10 mm
- Maximum power input: 15 mW

Connectivity

- Connector: 3.5 mm stereo
- Microphone: Built-in microphone
- Compatible with: Blackberry, HTC, iPhone, LG, Motorola, Palm, Sony Ericsson, Nokia, Samsung
- Type of cable: OFC
- Cable Connection: two-parallel, symmetric
- Cable length: 1.2 m
- Finishing of connector: gold-plated

Convenience

- Volume control

Packaging dimensions

- Type of shelf placement: Dummy
- Packaging dimensions (W x H x D):

- 9,6 x 17,4 x 3,2 cm
- Nett weight: 0,017 kg
- Gross weight: 0,062 kg
- Tare weight: 0,045 kg
- EAN: 69 23410 71469 2
- Number of products included: 1
- Packaging type: Dummy
- Packaging dimensions (W x H x D):
3,8 x 6,9 x 1,3 inch
- Gross weight: 0,137 lb
- Nett weight: 0,037 lb
- Tare weight: 0,100 lb

Outer Carton

- Outer carton (L x W x H): 42,3 x 21 x 18,3 cm
- Nett weight: 0,408 kg
- Gross weight: 1,93 kg
- Tare weight: 1,522 kg
- Number of consumer packagings: 24
- Gross weight: 4,254 lb
- GTIN: 1 69 23410 71469 9
- Outer carton (L x W x H): 16,7 x 8,3 x 7,2 inch
- Nett weight: 0,899 lb
- Tare weight: 3,355 lb

Inner Carton

- Inner carton (L x W x H): 19,8 x 10,2 x 16,5 cm
- Nett weight: 0,102 kg
- Gross weight: 0,448 kg
- Tare weight: 0,346 kg
- Number of consumer packagings: 6
- Gross weight: 0,988 lb
- GTIN: 2 69 23410 71469 6
- Inner carton (L x W x H): 7,8 x 4,0 x 6,5 inch
- Nett weight: 0,225 lb
- Tare weight: 0,763 lb



Issue date 2013-05-28

Version: 1.1.4

12 NC: 8670 000 90089
EAN: 69 23410 71469 2

© 2013 Koninklijke Philips N.V.
All Rights reserved.

Specifications are subject to change without notice.
Trademarks are the property of Koninklijke Philips N.V.
or their respective owners.

www.philips.com