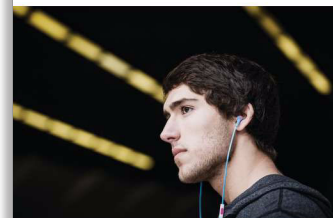




Philips
CitiScape In-Ear
Headphones

CitiScape collection
In-ear



SHE7055BR



Clear natural sound

with anti-tangle flat cable

Add zest to your life with CitiScape Indies' urban-cool colors, inspired by the most vibrant cities and hoods. Soft, noise-isolating ear caps seal in the amazingly clear sound and dynamic bass for a comfy and immersive experience.

Supreme comfort

- Choose from 3 pairs of ear caps for a perfect fit
- Ultra small and snug earphones for a comfy fit

Stay connected to your music and friends

- Switch from music to phone calls with built-in microphone

Design for convenience

- Flat anti-tangle cable with slider to keep you tangle-free
- Rubberized cable relief enhances durability

Total sound immersion on the move

- Finely tuned 9mm drivers deliver clear sound & dynamic bass
- Noise isolating ear caps to block out the city's noise

PHILIPS

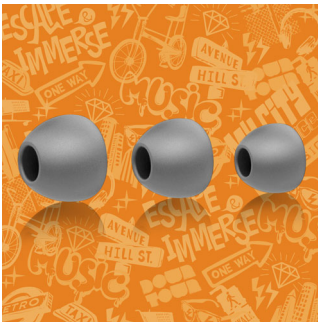
Highlights

Built-in microphone



Your CitiScape headphones feature a built-in microphone so you can easily switch from listening to music to taking phone calls. It's a breeze staying connected with your music – and with the people who matter most to you.

Choice of 3 pairs of ear caps



Your CitiScape in-ear headphones come with 3 pairs of ear caps so you can treat your ears to a perfect fit. The ear caps come in 3 sizes, from small to large – and are all stylish yet superbly comfortable.

Finely tuned 9mm drivers



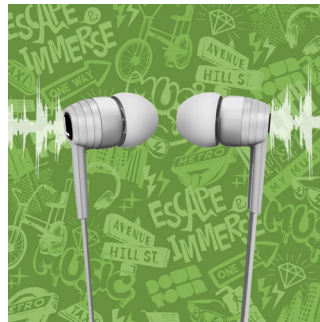
Finely tuned 9mm drivers deliver clear sound & dynamic bass

Flat cable & slider



Flat anti-tangle cable with slider to keep you tangle-free

Noise isolating ear caps



Noise isolating ear caps to block out the city's noise

Rubberized cable relief

Rubberized cable relief enhances durability to help extend the life of your headphones, a soft rubber where the cable connects the ear shell protects the connection from damage through repeated bending.

Ultra-small earphones

Ultra small and snug earphones for a comfy fit

Specifications

Sound

- Acoustic system: Closed
- Diaphragm: PET
- Frequency response: 19 - 21 000 Hz
- Impedance: 16 Ohm
- Magnet type: Neodymium
- Type: Dynamic
- Voice coil: CCAW
- Sensitivity: 107 dB
- Speaker diameter: 8.6 mm
- Maximum power input: 25 mW

Design

- Color: Teal

Connectivity

- Microphone: Built-in microphone
- Type of cable: OFC
- Cable Connection: two-parallel, symmetric
- Cable length: 1.2 m
- Finishing of connector: chrome-plated

Packaging dimensions

- Packaging dimensions (W x H x D): 9,5 x 17,5 x 2 cm
- Packaging dimensions (W x H x D): 3,7 x 6,9 x 0,8 inch
- Nett weight: 0,013 kg
- Nett weight: 0,029 lb
- Gross weight: 0,0502 kg
- Gross weight: 0,111 lb
- Tare weight: 0,0372 kg
- Tare weight: 0,082 lb
- EAN: 69 23410 71983 3
- Type of shelf placement: Dummy
- Number of products included: 1
- Packaging type: Dummy

Outer Carton

- Outer carton (L x W x H): 38 x 16 x 25 cm
- Outer carton (L x W x H): 15,0 x 6,3 x 9,8 inch
- Nett weight: 0,312 kg
- Nett weight: 0,688 lb
- Gross weight: 1,73 kg
- Gross weight: 3,814 lb
- Tare weight: 1,418 kg
- Tare weight: 3,126 lb
- GTIN: 1 69 23410 71983 0
- Number of consumer packagings: 24

Inner Carton

- Inner carton (L x W x H): 18 x 7 x 10,5 cm
- Inner carton (L x W x H): 7,1 x 2,8 x 4,1 inch
- Nett weight: 0,039 kg
- Nett weight: 0,086 lb
- Gross weight: 0,182 kg
- Gross weight: 0,401 lb
- Tare weight: 0,143 kg
- Tare weight: 0,315 lb
- GTIN: 2 69 23410 71983 7
- Number of consumer packagings: 3

Product dimensions

- Product dimensions (W x H x D): 2,2 x 2,4 x 1,2 cm
- Product dimensions (W x H x D): 0,9 x 0,9 x 0,5 inch
- Weight: 0,0127 kg
- Weight: 0,028 lb



Issue date 2016-07-15

Version: 4.1.9

12 NC: 8670 001 01751
EAN: 69 23410 71983 3

© 2016 Koninklijke Philips N.V.
All Rights reserved.

Specifications are subject to change without notice.
Trademarks are the property of Koninklijke Philips N.V.
or their respective owners.

www.philips.com