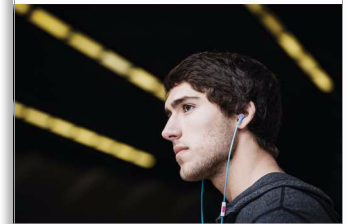




Philips
CitiScape In-Ear
Headphones

- CitiScape collection
- In-ear
- Black



SHE7055BK

Indies

Clear natural sound

Add zest to your life with CitiScape Indies'urban-cool colors headphones, inspired by the most vibrant cities and hoods. Soft, noise-isolating ear caps seal in the amazingly clear sound and dynamic bass for a comfy and immersive experience

Total sound immersion on the move

- Finely tuned 9mm drivers deliver clear sound & dynamic bass
- Noise isolating ear caps to block out the city's noise

Supreme comfort

- Choose from 3 pairs of ear caps for a perfect fit
- Ultra small and snug earphones for a comfy fit

Design for convenience

- Flat anti-tangle cable with slider to keep you tangle-free
- Rubberized cable relief enhances durability

Stay connected to your music and friends

- Switch from music to phone calls with built-in microphone



PHILIPS

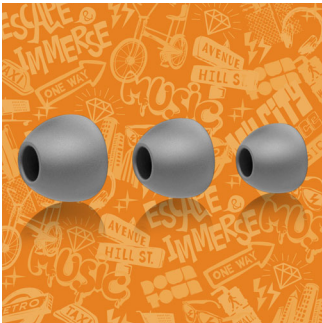
Highlights

Built-in microphone



Your CitiScape headphones feature a built-in microphone so you can easily switch from listening to music to taking phone calls. It's a breeze staying connected with your music – and with the people who matter most to you.

Choice of 3 pairs of ear caps



Your CitiScape in-ear headphones come with 3 pairs of ear caps so you can treat your ears to a perfect fit. The ear caps come in 3 sizes, from

small to large – and are all stylish yet superbly comfortable.

Finely tuned 9mm drivers



Finely tuned 9mm drivers deliver clear sound & dynamic bass

Flat cable & slider



Flat anti-tangle cable with slider to keep you tangle-free

Noise isolating ear caps



Noise isolating ear caps to block out the city's noise

Rubberized cable relief

Rubberized cable relief enhances durability to help extend the life of your headphones, a soft rubber where the cable connects the ear shell protects the connection from damage through repeated bending.

Ultra-small earphones

Ultra small and snug earphones for a comfy fit

Specifications

Sound

- Acoustic system: Closed
- Diaphragm: PET
- Frequency response: 19 - 21 000 Hz
- Impedance: 16 Ohm
- Magnet type: Neodymium
- Type: Dynamic
- Voice coil: CCAW
- Sensitivity: 107 dB
- Speaker diameter: 8.6 mm
- Maximum power input: 25 mW

Connectivity

- Microphone: Built-in microphone
- Type of cable: OFC
- Cable Connection: two-parallel, symmetric
- Cable length: 1.2 m
- Finishing of connector: chrome-plated

Packaging dimensions

- Packaging dimensions (W x H x D):
9.5 x 17.5 x 2 cm
- Packaging dimensions (W x H x D):
3.7 x 6.9 x 0.8 inch
- Nett weight: 0.0139 kg
- Nett weight: 0.031 lb
- Gross weight: 0.0513 kg
- Gross weight: 0.113 lb
- Tare weight: 0.0374 kg
- Tare weight: 0.082 lb
- EAN: 69 23410 71908 6
- Type of shelf placement: Both
- Number of products included: 1
- Packaging type: Blister

Outer Carton

- Outer carton (L x W x H): 37.5 x 15.5 x 23.5 cm
- Outer carton (L x W x H): 14.8 x 6.1 x 9.3 inch
- Nett weight: 0.3336 kg
- Nett weight: 0.735 lb
- Gross weight: 1.73 kg
- Gross weight: 3.814 lb
- Tare weight: 1.3964 kg
- Tare weight: 3.079 lb
- GTIN: 1 69 23410 71908 3
- Number of consumer packagings: 24

Inner Carton

- Inner carton (L x W x H): 18 x 7 x 10.5 cm
- Inner carton (L x W x H): 7.1 x 2.8 x 4.1 inch
- Nett weight: 0.0417 kg
- Nett weight: 0.092 lb
- Gross weight: 0.186 kg
- Gross weight: 0.41 lb
- Tare weight: 0.1443 kg
- Tare weight: 0.318 lb
- GTIN: 2 69 23410 71908 0
- Number of consumer packagings: 3

Product dimensions

- Product dimensions (W x H x D):
2.2 x 2.4 x 1.2 cm
- Product dimensions (W x H x D):
0.9 x 0.9 x 0.5 inch
- Weight: 0.0139 kg
- Weight: 0.031 lb



Issue date 2013-05-31

Version: 5.3.3

12 NC: 8670 001 00776
EAN: 69 23410 71908 6

© 2013 Koninklijke Philips N.V.
All Rights reserved.

Specifications are subject to change without notice.
Trademarks are the property of Koninklijke Philips N.V.
or their respective owners.

www.philips.com

* *Functions availability may vary based on mobile phone compatibility.