



Clear natural sound

with anti-tangle flat cable

Add zest to your life with CitiScape Indies' urban-cool colors, inspired by the most vibrant cities and hoods. Soft, noise-isolating ear caps seal in the amazingly clear sound and dynamic bass for a comfy and immersive experience.

Supreme comfort

- Choose from 3 pairs of ear caps for a perfect fit
- Ultra small and snug earphones for a comfy fit

Total sound immersion on the move

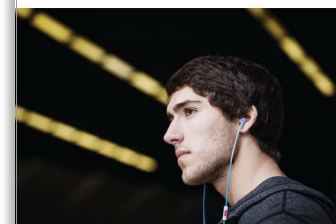
- Finely tuned 9mm drivers deliver clear sound & dynamic bass
- Noise isolating ear caps to block out the city's noise

Design for convenience

- Flat anti-tangle cable with slider to keep you tangle-free
- Rubberized cable relief enhances durability

Philips
CitiScape In-Ear
Headphones

- CitiScape collection
- In-ear
- Black



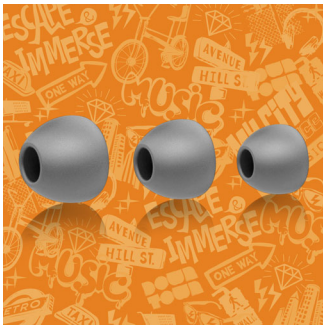
SHE7050BK



PHILIPS

Highlights

Choice of 3 pairs of ear caps



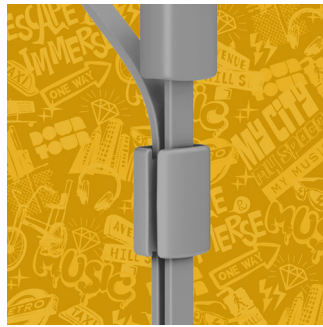
Your CitiScape in-ear headphones come with 3 pairs of ear caps so you can treat your ears to a perfect fit. The ear caps come in 3 sizes, from small to large – and are all stylish yet superbly comfortable.

Finely tuned 9mm drivers



Finely tuned 9mm drivers deliver clear sound & dynamic bass

Flat cable & slider



Flat anti-tangle cable with slider to keep you tangle-free

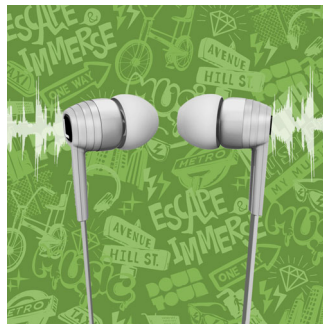
Rubberized cable relief

Rubberized cable relief enhances durability to help extend the life of your headphones, a soft rubber where the cable connects the ear shell protects the connection from damage through repeated bending.

Ultra-small earphones

Ultra small and snug earphones for a comfy fit

Noise isolating ear caps



Noise isolating ear caps to block out the city's noise

Specifications

Product dimensions

- Product dimensions (W x H x D): 2.2 x 2.4 x 1.2 cm
- Product dimensions (W x H x D): 0.9 x 0.9 x 0.5 inch
- Weight: 0.0127 kg
- Weight: 0.028 lb

Sound

- Acoustic system: Closed
- Diaphragm: PET
- Frequency response: 19 - 21 000 Hz
- Impedance: 16 Ohm
- Magnet type: Neodymium
- Type: Dynamic
- Sensitivity: 107 dB
- Speaker diameter: 8.6 mm
- Maximum power input: 25 mW
- Voice coil: CCAW

Connectivity

- Type of cable: OFC
- Cable Connection: two-parallel, symmetric
- Cable length: 1.2 m
- Finishing of connector: chrome-plated

Packaging dimensions

- Packaging dimensions (W x H x D): 9.5 x 17.5 x 2 cm
- Packaging dimensions (W x H x D): 3.7 x 6.9 x 0.8 inch
- Nett weight: 0.0127 kg
- Nett weight: 0.028 lb
- Gross weight: 0.0502 kg
- Gross weight: 0.111 lb
- Tare weight: 0.0375 kg
- Tare weight: 0.083 lb
- EAN: 69 23410 71904 8
- Type of shelf placement: Both
- Number of products included: 1
- Packaging type: Blister

Outer Carton

- Outer carton (L x W x H): 37.5 x 15.5 x 23.5 cm
- Outer carton (L x W x H): 14.8 x 6.1 x 9.3 inch
- Nett weight: 0.3048 kg
- Nett weight: 0.672 lb
- Gross weight: 1.7 kg
- Gross weight: 3.748 lb
- Tare weight: 1.3952 kg
- Tare weight: 3.076 lb
- GTIN: 1 69 23410 71904 5
- Number of consumer packagings: 24

Inner Carton

- Inner carton (L x W x H): 18 x 7 x 10.5 cm
- Inner carton (L x W x H): 7.1 x 2.8 x 4.1 inch
- Nett weight: 0.0381 kg
- Nett weight: 0.084 lb
- Gross weight: 0.182 kg
- Gross weight: 0.401 lb
- Tare weight: 0.1439 kg
- Tare weight: 0.317 lb
- GTIN: 2 69 23410 71904 2
- Number of consumer packagings: 3



Issue date 2013-05-28

Version: 2.2.6

12 NC: 8670 001 00767
EAN: 69 23410 71904 8

© 2013 Koninklijke Philips N.V.
All Rights reserved.

Specifications are subject to change without notice.
Trademarks are the property of Koninklijke Philips N.V.
or their respective owners.

www.philips.com