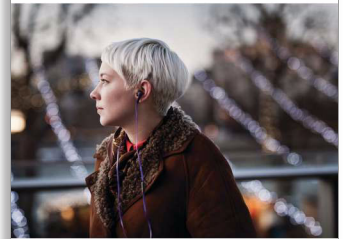




Philips
CitiScape In-Ear
Headphones

St. Germain
Purple



SHE5105PP



Relish in clear, natural sound

plus smart anti-tangle magnetic cables

Funky yet elegant, the CitiScape St Germain Headphone is inspired by Paris' boho charm. Soft, noise isolating ear caps seal in clear, natural sound for total comfort and enjoyment, while anti-tangle magnetic cables keep life smooth.

Total immersion

- Precisely tuned 10mm drivers deliver clear & detailed sound
- Noise isolating ear caps to block out the city's noise

Supreme comfort

- Choose from 3 pairs of ear caps for a perfect fit
- Magnetic fluted earbuds ensure neat and easy storage
- Flat 1.2m anti-tangle cable keeps you kink- and knot-free

Music and calls

- Switch from music to phone calls with built-in microphone

Easy music sharing

- Smart sliding cable for fun and effortless music sharing

PHILIPS

Highlights

Choice of 3 pairs of ear caps



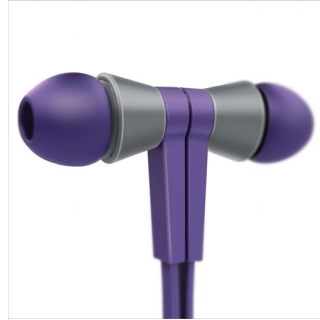
Your CitiScape in-ear headphones come with 3 pairs of ear caps so you can treat your ears to a perfect fit. The ear caps come in 3 sizes, from small to large – and are all stylish yet superbly comfortable.

Clear and detailed sound



Plug into a world of crystal clear and natural sound with precisely tuned 10mm drivers. Your CitiScape in-ear headphones are carefully engineered to deliver crisp and richly detailed yet natural sound – whatever the music you're listening to.

Magnetic fluted earbuds



Your CitiScape in-ear headphones feature magnetic fluted earbuds that cleverly ensure neat and easy storage. Magnets are embedded in the back of each earbud so they stick together – no tangles, fuss or muss. Just click them together back-to-back, bundle them together with your flat tangle-free cable and stash in your bag, knowing you'll be able to retrieve them easily – anytime.

Noise isolating ear caps

Noise isolating ear caps to block out the city's noise

Smart sliding cable



Sharing your music with a friend is made easier with your CitiScape headphones' smart sliding cable. Its built-in clip slides smoothly down the headphone cable, cleverly splitting the

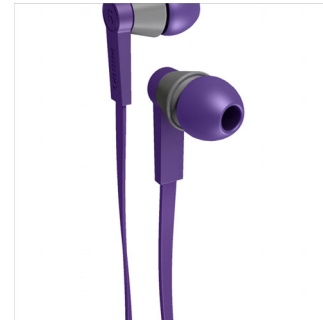
earphones so that you and your friend can comfortably tune in to the same music ... and enjoyment.

Built-in microphone



Your CitiScape headphones feature a built-in microphone so you can easily switch from listening to music to taking phone calls. It's a breeze staying connected with your music – and with the people who matter most to you.

Flat anti-tangle cable



Say goodbye to wrestling with knotted and messy cables in and out of your bag. Your CitiScape headphones' flat 1.2m anti-tangle cable stays kink- and knot-free – always. Now you can focus on what matters most, like enjoying your music with ease wherever you go.

Specifications

Sound

- Acoustic system: Semi-closed
- Diaphragm: Mylar dome
- Frequency response: 20 - 22 000 Hz
- Impedance: 16 Ohm
- Magnet type: Neodymium
- Type: Dynamic
- Voice coil: CCAW
- Sensitivity: 105 dB
- Speaker diameter: 10 mm
- Maximum power input: 20 mW

Connectivity

- Connector: 3.5 mm stereo
- Type of cable: OFC
- Cable Connection: two-parallel, symmetric
- Cable length: 1.2 m
- Finishing of connector: gold-plated
- Compatible with: iPhone®, BlackBerry®, HTC, LG, MOTOROLA, Nokia, Palm®, SAMSUNG, Sony Ericsson

Packaging dimensions

- Packaging dimensions (W x H x D):
9.5 x 17.5 x 2 cm
- Nett weight: 0.025 kg
- Gross weight: 0.0615 kg

- Tare weight: 0.0365 kg
- EAN: 69 23410 71352 7
- Number of products included: 1
- Packaging type: Blister
- Type of shelf placement: Both

Outer Carton

- Outer carton (L x W x H): 37.5 x 15.5 x 23.5 cm
- Nett weight: 0.6 kg
- Gross weight: 1.958 kg
- Tare weight: 1.358 kg
- Number of consumer packagings: 24
- GTIN: 1 69 23410 71352 4

Inner Carton

- Inner carton (L x W x H): 18 x 7 x 10.5 cm
- Nett weight: 0.075 kg
- Gross weight: 0.214 kg
- Tare weight: 0.139 kg
- Number of consumer packagings: 3
- GTIN: 2 69 23410 71352 1

Product dimensions

- Product dimensions (W x H x D):
2.2 x 2.4 x 1.2 cm
- Weight: 0.016 kg



Issue date 2013-12-09

Version: 4.7.3

12 NC: 8670 000 85739
EAN: 69 23410 71352 7

© 2013 Koninklijke Philips N.V.
All Rights reserved.

Specifications are subject to change without notice.
Trademarks are the property of Koninklijke Philips N.V.
or their respective owners.

www.philips.com