



Philips  
Headphones

8.6-mm drivers/closed-back  
In-ear

**SHE3700BL**



## Big beats, pumping bass

Compact design with vacuum metallised protection

Ultra small, big bass Philips MyJam Vibes in-ear headphones feature oval tube inserts for comfort and vacuum metallised coating for sleek looks with extra protection.

### Revel in quality sound

- Big bass and clear sound through efficient drivers
- A perfect in-ear seal blocks out external noise

### Listen for longer

- Oval sound tube insert provides an ergonomic comfort fit
- 3 interchangeable rubber ear caps offer an optimal fit
- Shiny, colourful coating looks sleek and also protects

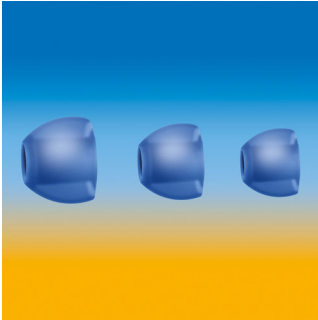
### Always ready to go

- Reinforced cable relief enhances durability and connectivity

# PHILIPS

## Highlights

### 3 sizes of ear caps



Ear caps come in a choice of 3 sizes - small, medium and large - for a personalised and perfect fit

### Colourful shiny coating



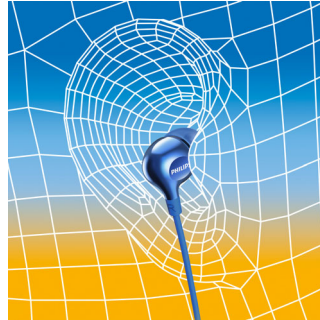
A high quality, glossy and colourful coating creates a sleek look while adding an extra protective surface.

### Efficient drivers



Philips Vibes in-ear headphones house efficient drivers inside a compact design. They fit perfectly while pumping out clear sound and booming bass.

### Oval sound tube



An oval sound tube insert provides ergonomic comfort to fit the true shape of the ear.

### Perfect in-ear fit



Ultra small earphones fit perfectly inside the ear, creating a seal that blocks out external noise.

### Reinforced cable relief

To extend the life of your headphones, a soft rubber relief between them and the cable protects the connection from damage through repeated bending.

## Specifications

### Accessories

- Eartips: Eartips: 3 sizes S, M, L

### Design

- Colour: Blue

### Sound

- Acoustic system: Closed
- Voice coil: copper
- Frequency response: 11 - 22,000 Hz
- Impedance: 16 ohm
- Maximum power input: 20 mW
- Sensitivity: 105 dB
- Speaker diameter: 8.6 mm
- Type: Dynamic
- Diaphragm: PET

### Connectivity

- Cable Connection: two-parallel, symmetric
- Cable length: 1.2 m
- Connector: 3.5 mm
- Finishing of connector: chrome-plated
- Type of cable: copper

### Inner Carton

- Gross weight: 0.125 kg
- GTIN: 2 69 25970 70912 9
- Inner carton (L x W x H): 18.1 x 8.1 x 6 cm
- Net weight: 0.036 kg
- Number of consumer packages: 3
- Tare weight: 0.089 kg

### Outer Carton

- Gross weight: 1.127 kg
- GTIN: 1 69 25970 70912 2
- Outer carton (L x W x H): 37.5 x 17.9 x 13.9 cm
- Net weight: 0.288 kg
- Number of consumer packages: 24
- Tare weight: 0.839 kg

### Packaging dimensions

- Packaging type: Blister
- Type of shelf placement: Both
- Packaging dimensions (W x H x D): 5 x 17.3 x 2.7 cm
- EAN: 69 25970 70912 5
- Gross weight: 0.026 kg
- Net weight: 0.012 kg
- Number of products included: 1
- Tare weight: 0.014 kg



Issue date 2017-09-04

Version: 5.0.4

12 NC: 8670 001 34691  
EAN: 69 25970 70912 5

© 2017 Koninklijke Philips N.V.  
All Rights reserved.

Specifications are subject to change without notice.  
Trademarks are the property of Koninklijke Philips N.V.  
or their respective owners.

[www.philips.com](http://www.philips.com)