



## Bass Vents

for enhanced sound

With enhanced bass performance, these in-ear headphones bring quality music comfortably to your ears.

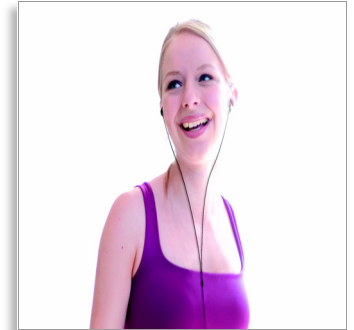
### Music to your ears

- Bass beat vents allow air movement for better sound

### Made to fit you and your lifestyle

- 15mm speaker driver optimizes wearing comfort

Philips  
In-Ear Headphones



SHE1360



# PHILIPS

sense and simplicity

# Specifications

## Packaging dimensions

- Packaging dimensions (W x H x D):  
4 x 6.9 x 1.1 inch
- Nett weight: .031 lb
- Gross weight: .068 lb
- Tare weight: .037 lb

## Outer Carton

- Outer carton (L x W x H): 18.1 x 10.4 x 10.2 inch

- Nett weight: 2.222 lb
- Gross weight: 7.297 lb
- Tare weight: 5.075 lb

## Inner Carton

- Inner carton (L x W x H): 8.5 x 4.3 x 3.2 inch
- Nett weight: .185 lb
- Gross weight: .522 lb
- Tare weight: .337 lb

# Highlights

## Bass Beat vents

Bass beat vents allow air movement for better sound with a deep rich bass.

## 15 mm speaker driver

Small enough for optimum wearing comfort and big enough to deliver crisp, non-distorted sound, the 15 mm speaker driver is an ideal size for listening enjoyment.



Issue date 2012-03-29

Version: 5.1.9

12 NC: 8670 000 30342  
UPC: 6 09585 13377 8

© 2012 Koninklijke Philips Electronics N.V.  
All Rights reserved.

Specifications are subject to change without notice.  
Trademarks are the property of Koninklijke Philips  
Electronics N.V. or their respective owners.

[www.philips.com](http://www.philips.com)