



Feel it. BASS+

Philips BASS+ headphones pack huge, punchy bass into a sleek, compact package. Good looking, great sounding and superb value. Bluetooth wireless headphones for those who need more bass in their beats without any extra bulk.

More bass

- Big, bold bass you can feel
- 32mm speaker drivers
- Great sound isolation for better listening experience

True comfort

- Adjustable earshells and headband for optimal comfort
- Control calls, music and volume with ear-shell switches
- Soft ear cushions for long-wearing comfort
- Flat folding design for easy portability
- Convenient hands-free calling

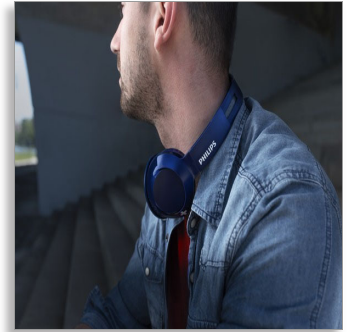
Wireless

- Bluetooth wireless technology
- Rechargeable battery offers up to 12 hours of playtime
- USB charging cable

Philips NULL
Wireless On Ear
Headphone with mic

32mm drivers/closed-back

On-ear
Soft ear cushions
Flat folding



SHB3075BL



PHILIPS

Highlights

12-hour playtime



With 12 hours of playtime, you'll have enough power to keep your music going all day.

32mm drivers



BASS+ headphones feature 32mm speaker drivers that produce big, pumping bass.

Adjustable fit



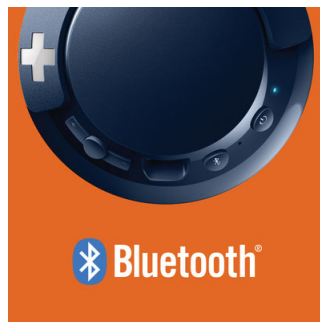
Designed for optimal fit, BASS+ headphones feature swiveling earshells and an adjustable headband to ensure a great fit for all wearers.

Big, bold bass



This is big, powerful bass that lets you really feel the beat. Don't let the sleek design fool you – specially tuned drivers and bass vents produce ultra-low end frequencies to create a unique BASS+ sound signature.

Bluetooth



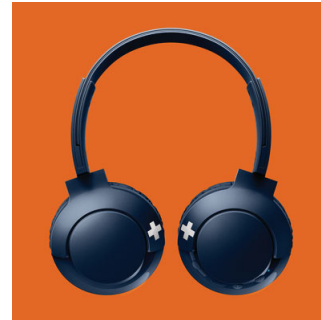
Easily pair your headphones with any Bluetooth device for wireless music.

Button controls



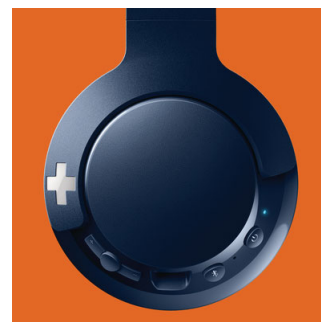
Button controls on the right ear shell enable you to control music and calls with a press.

Flat folding



With their flat folding design, BASS+ headphones are easy to fold and store away, making them your ideal travel companion.

Hands-free calls



Convenient hands-free calling with mic and Bluetooth® 4.1

Soft cushions



Soft, breathable ear cushions provide great comfort over long listening sessions.

Specifications

Sound

- Acoustic system: Closed
- Magnet type: NdFeB
- Frequency response: 9 - 21 000 Hz
- Impedance: 32 ohm
- Speaker diameter: 32 mm
- Maximum power input: 40 mW
- Sensitivity: 103 dB
- Type: dynamic

Connectivity

- Microphone: Built-in microphone
- Bluetooth profiles: A2DP, AVRCP, HFP, HSP
- Bluetooth version: 4.1
- Maximum range: Up to 10 m

Convenience

- Volume control
- Call Management: Call on Hold, Switch between 2 calls, Answer/End Call, Microphone mute, Reject Call, Switch between call and music

Accessories

- Quick start guide
- USB cable

Power

- Battery type: Li-Polymer
- Standby time: 166* hrs
- Talk time: 12* hr
- Music play time: 12* hr

Design

- Color: Blue

Product dimensions

- Product dimensions (W x H x D):
13.5 x 18.5 x 4 cm
- Product dimensions (W x H x D):
5.3 x 7.3 x 1.6 inch
- Weight: 0.132 kg
- Weight: 0.291 lb

Packaging dimensions

- Number of products included: 1
- Packaging dimensions (W x H x D):
19.5 x 22.5 x 4.8 cm
- Packaging dimensions (W x H x D):
7.7 x 8.9 x 1.9 inch
- Gross weight: 0.264 kg
- Nett weight: 0.153 kg
- Tare weight: 0.111 kg
- Gross weight: 0.582 lb
- Nett weight: 0.337 lb
- Tare weight: 0.245 lb
- EAN: 69 51613 99165 7
- Packaging type: Carton
- Type of shelf placement: Both

Outer Carton

- Number of consumer packagings: 3
- Outer carton (L x W x H): 21.2 x 16.5 x 24 cm
- Outer carton (L x W x H): 8.3 x 6.5 x 9.4 inch
- Gross weight: 0.98 kg
- Nett weight: 0.459 kg
- Tare weight: 0.521 kg
- Gross weight: 2.161 lb
- Nett weight: 1.012 lb
- Tare weight: 1.149 lb
- GTIN: 1 69 51613 99165 4



Issue date 2021-09-14

Version: 16.2.10

12 NC: 8670 001 43729
EAN: 69 51613 99165 7

© 2021 Koninklijke Philips N.V.
All Rights reserved.

Specifications are subject to change without notice.
Trademarks are the property of Koninklijke Philips N.V.
or their respective owners.

www.philips.com

* Actual results may vary