

# PHILIPS

Shaving heads

Shaver series 7000

GentlePrecisionPRO Blades

Fits S7000 (S7xxx)

Fits Star Wars Shaver SW77xx



SH70/61



## Reset your shaver to new

Change heads every 2 years for best results

Within two years your shaver heads cut 9 million hairs on your face. Replace the shaver heads and get back to 100% performance. Compatible with the Series 7000 Shaver.

### Compatibility

- Replacement heads for Shaver series 7000

### A close and smooth shave

- Blades protect skin and cut close even with 3-day stubble

### Easy to use

- Reset your shaver after replacing shaving heads
- Easy to replace shaving heads
- Replace your shaving heads in just two steps
- Reset your shaver to new

# Highlights

## Compatible with Series 7000



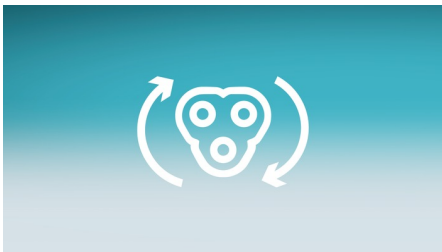
SH70 replacement heads are compatible with Shaver series 7000 (S7xxx) and Star Wars shaver SW7700.

## GentlePrecision PRO blades



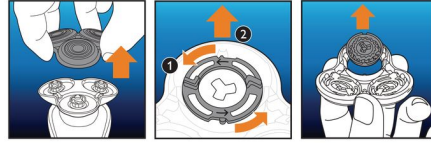
Our updated cutting system has skin protection technology, designed to only cut hair not skin. V shaped blades guide the skin away from the blades for a close smooth shave - even on 3-day stubble.

## Replacement reminder



The latest Philips shavers have an inbuilt replacement reminder in the form of a shaving unit symbol. This symbol will light up and indicate you when to replace shaving heads.

## Simple replacement



1. Open the shaver by pressing the "release" button; 2. Remove the retainer by turning the lock counterclockwise; 3. Take out the old shaving heads and carefully insert replacements; check that the heads align exactly in the setting; 4. Replace the retainer and secure it by turning the lock clockwise; 5. When you close the shaving head properly, you will hear it click into place.

## How to reset your shaver



After replacing shaving heads, you can reset the replacement reminder by pressing the on/off button for more than 7 seconds. Otherwise, replacement trigger will turn off automatically after 9 successive shaves.

## Reset your shaver to new



To get back to 100% performance, replace your shaving heads every 2 years.

# Specifications

## Shaving heads

Fits product type: Shaver series 7000 (S7xxx)  
Shaving heads per packaging: 3

## Cleaning

Usage: Use cleaning spray HQ110

