

Always there to help you

Register your product and get support at
www.philips.com/support



SD700



User manual

PHILIPS

Contents

1 Important	2
Hearing safety	2

2 Your Portable Speaker	3
Introduction	3
What's in the box	3
Overview of the product	4

3 Get started	5
Power supply	5
Turn on or off	5
Select a source	6

4 Play	7
Play from Bluetooth-enabled devices	7
Play from a Micro SD card or USB device	8
Play from an external device	8
Listen to FM radio	9
Listen through a headphone	9
Adjust volume	9

5 Product information	10
Specifications	10
USB playability information	10

6 Troubleshooting	11
About Bluetooth device	11

7 Notice	12
Care of the environment	12
Trademark notice	12

1 Important



Warning

- Never remove the casing of this product.
- Never lubricate any part of this product.
- Never place this product on other electrical equipment.
- Keep this product away from direct sunlight, naked flames or heat.

- Read these instructions.
- Follow all instructions.
- Do not use this apparatus near water.
- Do not block any ventilation openings. Install in accordance with the manufacturer's instructions.
- Do not install near any heat sources such as radiators, heat registers, stoves, or other apparatus (including amplifiers) that produce heat.
- Only use attachments/accessories specified by the manufacturer.
- Refer all servicing to qualified service personnel. Servicing is required when the apparatus has been damaged in any way, such as liquid has been spilled or objects have fallen into the apparatus, the apparatus has been exposed to rain or moisture, does not operate normally, or has been dropped.
- The battery shall not be exposed to excessive heat such as sunshine, fire or the like.
- Apparatus shall not be exposed to dripping or splashing.
- Do not place any sources of danger on the apparatus (e.g. liquid filled objects, lighted candles).

Listen at a moderate volume.

- Using headphones at a high volume can impair your hearing. This product can produce sounds in decibel ranges that may cause hearing loss for a normal person, even for exposure less than a minute. The higher decibel ranges are offered for those that may have already experienced some hearing loss.
- Sound can be deceiving. Over time your hearing 'comfort level' adapts to higher volumes of sound. So after prolonged listening, what sounds 'normal' can actually be loud and harmful to your hearing. To guard against this, set your volume to a safe level before your hearing adapts and leave it there.

To establish a safe volume level:

- Set your volume control at a low setting.
- Slowly increase the sound until you can hear it comfortably and clearly, without distortion.

Listen for reasonable periods of time:

- Prolonged exposure to sound, even at normally 'safe' levels, can also cause hearing loss.
- Be sure to use your equipment reasonably and take appropriate breaks.

Be sure to observe the following guidelines when using your headphones.

- Listen at reasonable volumes for reasonable periods of time.
- Be careful not to adjust the volume as your hearing adapts.
- Do not turn up the volume so high that you can't hear what's around you.
- You should use caution or temporarily discontinue use in potentially hazardous situations.



Note

- The type plate is located on the bottom of the apparatus.

Hearing safety



2 Your Portable Speaker

Congratulations on your purchase, and welcome to Philips! To fully benefit from the support that Philips offers, register your product at www.philips.com/welcome.

Introduction

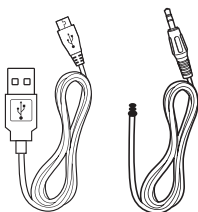
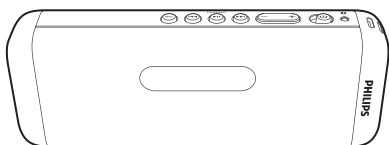
With this speaker, you can:

- listen to FM radio; and
- enjoy audio from Micro SD card, USB devices, Bluetooth-enabled devices, and other external devices.

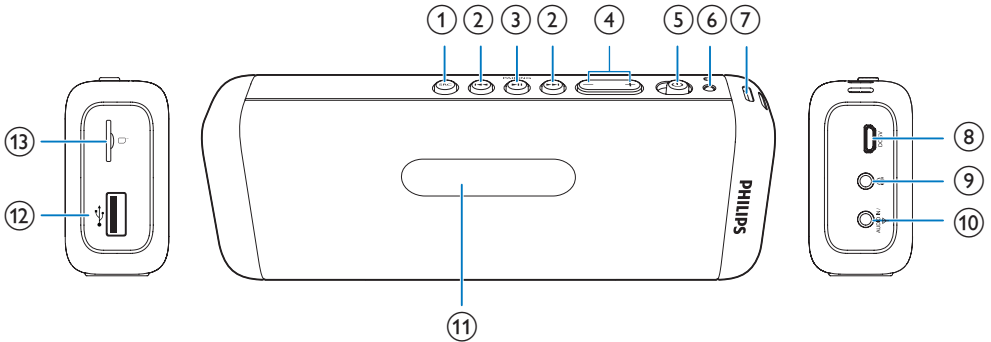
What's in the box

Check and identify the contents of your package:

- Speaker
- USB cable for charging
- FM antenna
- Short user manual



Overview of the product



① SRC

- Select an audio source.

② ⏮ / ⏭

- Select a track.
- Search within play.
- Tune to FM radio stations.

③ ▶⏸ / PAIRING

- In SD, USB, or Bluetooth mode, press to pause or resume play.
- In Bluetooth mode, press and hold for three seconds to disconnect Bluetooth connection or enter pairing mode.
- In FM mode, press and hold for two seconds to store FM radio stations automatically.
- In FM mode, press to select a preset radio station.

④ -/+

- Adjust volume.

⑤ ⏻

- Turn the product on or off.

⑥ Bluetooth indicator

⑦ Hole for attaching the string

⑧ DC 5V

- Recharge the built-in battery.

⑨ 🎧

- Connect a headphone.

⑩ AUDIO IN/YP

- Connect an external audio device.
- Connect FM antenna.

⑪ Display panel

- Show current status.

⑫ 🔄

- Connect a USB storage device.

⑬ SD slot

- Connect a Micro SD card.

3 Get started

Always follow the instructions in this chapter in sequence.

If you contact Philips, you will be asked for the model and serial number of this apparatus. The model number and serial number are on the bottom of the apparatus. Write the numbers here:

Model No. _____

Serial No. _____

Power supply

The speaker can operate on the built-in rechargeable battery.

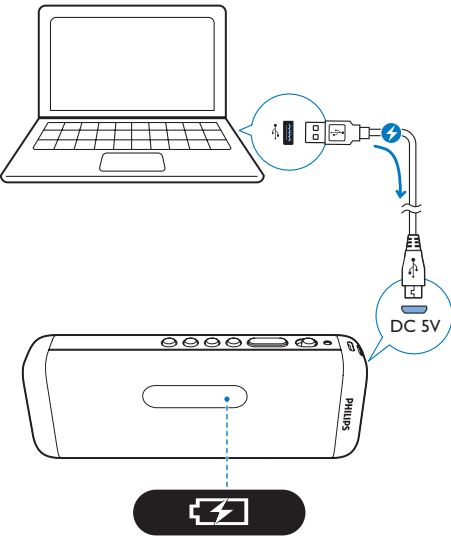
Note

- Before use, fully charge the built-in battery.
- Rechargeable battery has a limited number of charge cycles. Battery life and number of charge cycles vary by use and settings.

To recharge the built-in battery:


Connect the supplied USB cable to:

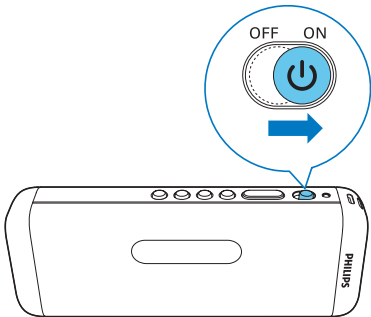
- the **DC 5V** socket on the speaker.
- the USB socket on a computer.



Battery status	Battery icon () behavior
Low battery	Flashing
While charging	Solid on
Fully charged or charging stopped	Off

Turn on or off

- To turn the product on, slide the  switch to the right.
↳ The product switches to the last selected source.



- To turn the product off, slide the switch to the left.

Switch to ECO standby mode

In SD, USB, Audio-in, or Bluetooth mode, the product switches to ECO standby mode automatically in the following situations:

- Music playback is stopped for 15 minutes;
- There is no Micro SD card, USB device or Audio-in cable connected for 15 minutes; or
- Bluetooth connection is disconnected for 15 minutes.

To return to the SD/USB/Audio-in/Bluetooth mode:

- Press ►|| to resume playback; or
- Slide the switch to turn the product off first, then turn it on.

Select a source

Press **SRC** repeatedly to select an audio source: FM tuner, USB, SD, Bluetooth, or Audio-in.

4 Play

Play from Bluetooth-enabled devices

With this product, you can listen to audio from Bluetooth-enabled devices.

Connect a device

Note

- Make sure that your Bluetooth device is compatible with this product.
- Before pairing a device with this product, read its user manual for Bluetooth compatibility.
- The product can memorize a maximum of 4 paired devices. The fifth connected device will replace the first one.
- Make sure that Bluetooth function is enabled on your device, and your device is set as visible to all other Bluetooth devices.
- Any obstacle between this product and a Bluetooth device can reduce the operational range.
- Keep away from any other electronic device that may cause interference.
- The operational range between this product and a Bluetooth device is approximately 10 meters (30 feet).

- 1 Press **SRC** repeatedly to select Bluetooth source.
↳ **[bt]** is displayed, and the Bluetooth indicator flashes blue slowly.
- 2 Press and hold **PAIRING** until you hear beep sound.
↳ The product is ready for pairing.
↳ The Bluetooth indicator flashes blue quickly.
- 3 On your Bluetooth device, enable Bluetooth and search for Bluetooth devices.

- 4 Select **[Philips SD700]** on your device to start pairing and connection. If necessary, enter default password "0000".
↳ After successful connection, the speaker beeps twice, and the Bluetooth indicator stop flashing.

Bluetooth indicator	Status
Flashing blue quickly	Ready for pairing a new device
Flashing blue slowly	Trying to connect a paired device
Solid blue	Connected

To disconnect the Bluetooth-enabled device:

- Press and hold **PAIRING** for three seconds;
- Disable Bluetooth on your device; or
- Move the device beyond the communication range.
↳ The product beeps twice, and the Bluetooth indicator flashes blue.

To reconnect the Bluetooth-enabled device:

- Next time this product enters Bluetooth mode, it will reconnect the last connected device automatically; or
- On your Bluetooth device, select "**Philips SD700**" on your Bluetooth menu to start connection.

To connect another Bluetooth-enabled device:

- 1 Press and hold **PAIRING** for three seconds to disconnect the currently connected device.
↳ The product enters Bluetooth pairing mode.
- 2 Connect another Bluetooth device.

Play from Bluetooth device

After successful Bluetooth connection, play audio on the Bluetooth device.

- ↳ Audio streams from your Bluetooth device to the product.
- To pause or resume play, press **PAIRING**.

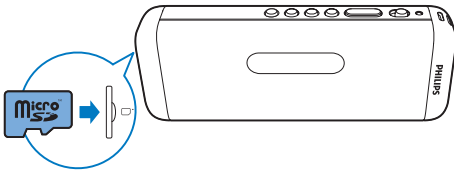
Play from a Micro SD card or USB device

Note

- Make sure that the USB storage device or Micro SD card contains playable audio content.

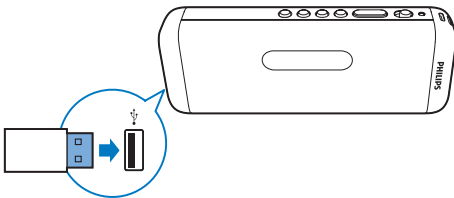
Play from a Micro SD card

- Press **SRC** repeatedly to select the SD card source.
↳ **[SD]** is displayed.
- Insert a Micro SD card into the card slot.
↳ Play starts automatically.



Play from a USB storage device

- Press **SRC** repeatedly to select the USB source.
↳ **[USB]** is displayed.
- Insert the USB device into the USB socket.
↳ Play starts automatically.



Control play

In USB or SD mode, follow the instructions below to control play.

Button	Function
⏮ / ⏭	Press to skip to the previous or next track. Press and hold to fast forward or fast reverse the track during playback, then release to resume play.
⏸	Press to start, pause, or stop play.

Shuffle play

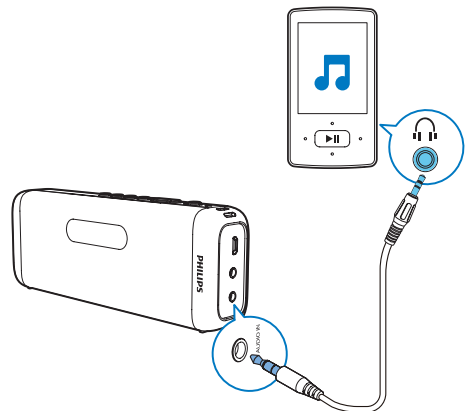
During play, press and hold ⏮ and ⏭ simultaneously for 2 seconds.

- ↳ **[∞]** is displayed.
- ↳ All tracks are played randomly.

Play from an external device

With this product, you can listen to an external audio device such as an MP3 player.

- Press **SRC** repeatedly to select AUX source.
- Connect an audio input cable with a 3.5 mm connector on both ends to
 - the **AUDIO IN** socket on the speaker.
 - the headphone socket on an external device.
- Play audio on the device (refer to its user manual).



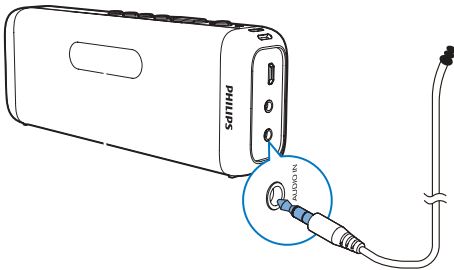
Listen to FM radio

Tune to FM radio stations

Note

- Keep the product away from other electronic devices to avoid radio interference.

- 1 Plug the FM antenna into the **AUDIO IN** socket.



- 2 Press **SRC** repeatedly to select FM tuner source.
- 3 Press and hold **◀◀** / **▶▶** for two seconds.
↳ The product tunes to a station with strong reception automatically.
- 4 Repeat step 3 to tune to more radio stations.

To tune to a station manually:

Press **◀◀** / **▶▶** repeatedly until you find better reception.

Store FM radio stations automatically

Note

- You can store a maximum of 20 preset radio stations.

In FM tuner mode, press and hold **▶▶▶** for two seconds.

- ↳ All available radio stations are stored automatically, then the first stored radio station is broadcast.

Tip

- You can press **◀◀** / **▶▶** to stop auto scan.

Select a preset radio station

In tuner mode, press **▶▶** repeatedly to select a preset station.

Listen through a headphone

Plug a headphone into the  socket on the product.

Adjust volume

During play, press **-/+** to increase or decrease volume.

Tip

- You can press and hold **-/+** for 2 seconds to increase or decrease volume continuously.

5 Product information

Note

- Product information is subject to change without prior notice.

Specifications

Amplifier

Rated Output Power	2 X 1.5W RMS
Frequency Response	60 -20000 Hz, ± 3 dB
Signal to Noise Ratio	>70 dBA
Aux Input	600mV RMS 22kohm

Tuner (FM)

Tuning Range	FM: 87.5-108 MHz
Tuning Grid	50 KHz
- Mono, 26dB S/N Ratio	<22 dBf
- Stereo, 46dB S/N Ratio	>43 dBf
Search Selectivity	>28 dBf
Total Harmonic Distortion	<2%
Signal to Noise Ratio	>55dB

Bluetooth

Bluetooth Version	V3.0+EDR
Bluetooth Frequency Band	2.402GHz ~ 2.48GHz ISM Band
Bluetooth Distance	10 m (Free space)

Speaker

Speaker Impedance	4 ohm
Speaker Driver	4cm full range
Sensitivity	>79 \pm 3dB/m/W

General information

Power Supply (through Micro USB socket)	5 V \equiv 500 mA
Built-in Battery (Li-polymer battery)	3.7 V, 850 mAh
Eco Standby Power Consumption	<0.5 W
Dimensions - Main Unit (W x H x D)	164 x 63 x 33 mm
Weight - Main Unit	0.35 kg

USB playability information

Compatible USB devices:

- USB flash memory (USB2.0)
- USB flash players (USB2.0)
- memory cards (requires an additional card reader to work with this unit; Some multi-card USB reader may not be supported.)

Supported formats:

- USB or memory file format: FAT12, FAT16, FAT32 (sector size: 512 bytes)
- MP3 bit rate (data rate): 32-320 Kbps and variable bit rate
- Directory nesting up to a maximum of 8 levels
- Number of albums/ folders: maximum 99
- Number of tracks/titles: maximum 999
- File name in Unicode UTF8 (maximum length: 16 bytes)

Unsupported formats:

- Empty albums: an empty album is an album that does not contain MP3/ WMA files, and is not be shown in the display.
- Unsupported file formats are skipped. For example, Word documents (.doc) or MP3 files with extension .dlf are ignored and not played.
- AAC, WAV, PCM audio files
- DRM protected WMA files (.wav, .m4a, .m4p, .mp4, .aac)
- WMA files in Lossless format

6 Troubleshooting



Warning

- Never remove the casing of this device.

To keep the warranty valid, never try to repair the system yourself.

If you encounter problems when using this device, check the following points before requesting service. If the problem remains unsolved, go to the Philips Web page (www.philips.com/support). When you contact Philips, make sure that the device is nearby and the model number and serial number are available.

No power

- Recharge the battery.

No sound or poor sound

- Adjust volume on this product.
- Adjust volume on the connected device.
- Check if you have selected the correct audio source.

No response from the product

- Turn on the product.
- Recharge the battery.
- Turn the product off first, then turn it on to activate the product from standby mode.

Poor radio reception

- Increase the distance between the product and other electrical appliances.
- Plug the FM antenna into the **AUDIO IN** socket for better reception.
- Fully extend and adjust the position of the antenna.

USB device not supported

- The USB device is incompatible with the unit. Try another one.

About Bluetooth device

The audio quality is poor after connection with a Bluetooth-enabled device.

- The Bluetooth reception is poor. Move the device closer to this product or remove any obstacle between them.

Fail to search out SD700 on your device for pairing.

- Press and hold **PAIRING** for three seconds, and then try again.

Cannot connect with the device.

- The Bluetooth function of the device is not enabled. Refer to the user manual of the device for how to enable the function.
- This product is already connected with another Bluetooth-enabled device. Disconnect that device and then try again.

The paired device connects and disconnects constantly.

- The Bluetooth reception is poor. Move the device closer to this product or remove any obstacle between them.
- For some devices, Bluetooth connection may be deactivated automatically as a power-saving feature. This does not indicate any malfunction of this product.

7 Notice

Any changes or modifications made to this device that are not expressly approved by Gibson Innovations may void the user's authority to operate the equipment.

Care of the environment

Disposal of your old product



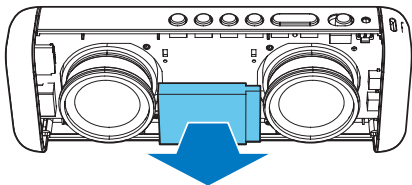
Your product is designed and manufactured with high quality materials and components, which can be recycled and reused. Do not throw away the product with the normal household waste at the end of its life, but hand it in at an official collection point or recycling. By doing this, you help to preserve the environment.



Caution

- Removal of the built-in battery invalidates the warranty and may destroy the product.

Always bring your product to a professional to remove the built-in battery.



Environmental information

All unnecessary packaging has been omitted. We have tried to make the packaging easy to separate into three materials: cardboard (box), polystyrene foam (buffer) and polyethylene (bags, protective foam sheet.)

Your system consists of materials which can be recycled and reused if disassembled by a specialized company. Please observe the local regulations regarding the disposal of packaging materials, exhausted batteries and old equipment.

Trademark notice

Bluetooth

The Bluetooth® word mark and logos are registered trademarks owned by Bluetooth SIG, Inc. and any use of such marks by Gibson is under license. Other trademarks and trade names are those of their respective owners.



Specifications are subject to change without notice.

2015 © Gibson Innovations Limited. All rights reserved.

This product has been manufactured by, and is sold under the responsibility of WOOX Innovations (Shanghai) Commercial Company Ltd., and WOOX Innovations (Shanghai) Commercial Company Ltd., is the warrantor in relation to this product.

Philips and the Philips Shield Emblem are registered trademarks of Koninklijke Philips N.V. and are used under license from Koninklijke Philips N.V.

