

Breast Pump BPA-free

吸乳器—不含双酚A

— BPA free

GB call free on **0800 331 6015**

GB ONLY (9am–4.30pm Mon-Fri)

IRL call free on **1800 744 5477**

IRL ONLY (9am–4.30pm Mon-Fri)

AU **1 300 364 474**

(Australia National)

NZ **0800 104 401**

SC 如果需要帮助，请联络 Philips AVENT

中国大陆咨询电话：**4008 800 008**

TC **+886 (2) 8245 7399 / 0800-231-099**

KR 아벤트 제품 카다로그가 필요할 시
고객만족실 **02-709-1200** (수신자 부담)
으로 연락주시기 바랍니다.

www.philips.com/AVENT

Philips AVENT, a business of Philips Electronics UK Ltd.
Philips Centre, Guildford Business Park, Guildford, Surrey, GU2 8XH

Trademarks owned by the Philips Group.
© Koninklijke Philips Electronics N.V. All Rights Reserved.

42133 5415 291

PHILIPS AVENT



GB Manual breast pump

SC 手动吸乳器

TC 手動吸乳器

KR

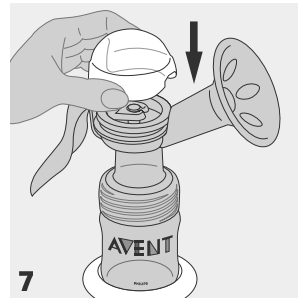
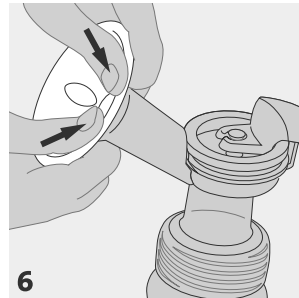
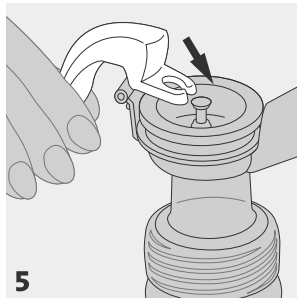
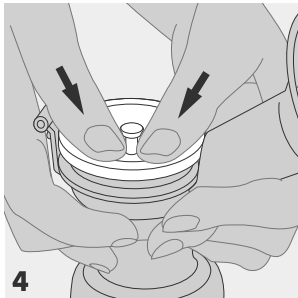
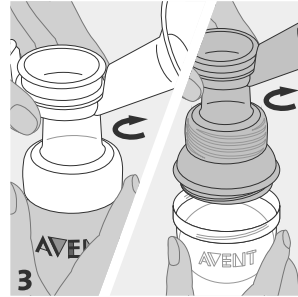
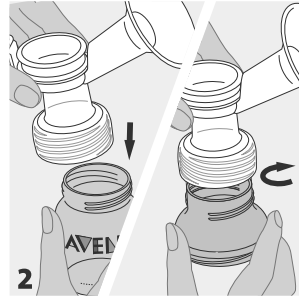
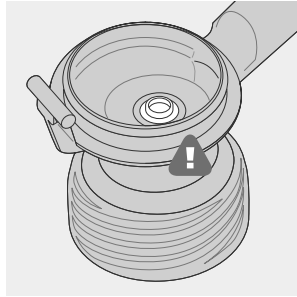
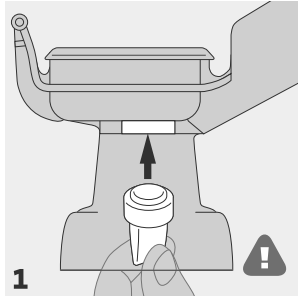


2.



or
或
또는

6. (1)-(7)



! **IMPORTANT: DO NOT LOSE THE WHITE VALVE. YOUR PUMP WILL NOT WORK WITHOUT IT OR IF IT IS FITTED INCORRECTLY.**
If lost, spare valves are available direct from Philips AVENT.

! **重要資訊：請勿丟失白色閥瓣。沒有該閥瓣或該閥瓣安裝不正確，吸乳器將無法工作。**
如果閥瓣丟失，可直接向飛利浦 AVENT 購買。

! **重要資訊：請勿丟失白色閥瓣。沒有該閥瓣或該閥瓣安裝不正確，吸乳器將無法工作。**
如果閥瓣丟失，可直接向飛利浦 AVENT 購買。



Please take five minutes to read through the **WHOLE** of this leaflet **BEFORE** you use your Philips AVENT manual breast pump for the first time.

Contents

1. Introducing the manual breast pump
2. Detailed parts guide
3. Cleaning and sterilisation
4. Keeping your breast pump sterile for travel
5. Using the manual breast pump with the Philips AVENT VIA feeding system
6. How to assemble the manual breast pump
7. When to express milk
8. Hints to help you succeed
9. How to use the manual breast pump
10. Storing your breast milk
11. Feeding your baby your expressed breast milk
12. Choosing the right teat for your baby
13. Troubleshooting guide
14. Other helpful products from Philips AVENT

Should you ever lose these instructions, they are available on our website: www.philips.com/AVENT

PHILIPS
AVENT

产品 : 飞利浦新安怡手动吸乳器
型号 : SCF310/20, /12, /13
884031020710, 884031012710,
884031013710.

产地 : 英国
材料 : 聚醚砜树脂, 聚丙烯, 硅胶

检
合格

飞利浦电子香港有限公司
香港湾仔皇后大道东1号太古广场3座5楼
全国顾客服务热线: 4008 800 008