














Electronic Display Guide

 <p>Steriliser plugged in and ready for mode selection</p>		
 <p>Ready for Mode 1 selection</p>	 <p>Ready for Mode 2 selection</p>	
 <p>Mode 1 sterilisation in progress – indicated by a beep and rotating '0'</p>	 <p>Mode 2 sterilisation in progress – indicated by a beep and three ascending and descending bars</p>	
 <p>Numerical countdown indicates sterilisation almost complete (Mode 1 only)</p>		
 <p>Sterilisation complete – indicated by 5 beeps and three flashing bars – items will remain sterile for up to 6 hours provided the lid is not opened</p>		
 <p>Up to 6 hours sterile time remaining</p>	 <p>Up to 4 hours sterile time remaining</p>	 <p>Up to 2 hours sterile time remaining</p>
 <p>Completion of Mode 1 cycle (6 hours) Mode 2 cycle (24 hours) – indicated by a long beep and a flashing '0'</p>		
 <p>Water level too high. See 'Troubleshooting' on page 7</p>		
 <p>Water level too low. See 'Troubleshooting' on page 7</p>		

Troubleshooting Guide

Steriliser will not work	Check that the mains lead is connected to the steriliser as well as plugged into the mains. Check fuse in plug.
Excessive steam escaping from under the lid	Parts incorrectly loaded. Refer to instructions on page 4 or 5.
Sterilising cycle takes too long	The steriliser is loaded with only a few items – light loads will take longer to cycle.
Flashing lower and side bars, and beep	Insufficient water has been placed in the steriliser. Switch off, remove water, (take care if the steriliser body is hot) and replace with 90ml of water for use with Mode 1 OR 200ml of water for use with Mode 2. Restart the unit.
Flashing top and side bars, and beep	An excessive amount of water has been placed in the steriliser. Switch off, remove water, (take care if the steriliser body is hot) and replace with 90ml of water for use with Mode 1 OR 200ml of water for use with Mode 2. Restart the unit.

WARNINGS

- Ensure the steriliser is placed on a firm level surface when in use.
- When in use, the steriliser contains boiling water and steam escapes from the vent in the lid.
- Never place items on top of the steriliser.
- Take care when opening as steam can burn.
- During the sterilising cycle the lid and the steriliser body are very hot.
- Always keep out of reach of children.
- **Never open the unit during the 6 minute sterilising cycle. Items are not sterile if the 6 minute sterilising cycle is interrupted.**
- To completely stop the steriliser at any time during a cycle, press and hold the control button for 2 seconds to return to selection mode or, unplug at the mains.
- Always disconnect the lead from the back of the steriliser before pouring away water and/or rinsing.
- Always unplug from the mains supply when not in use.
- The power supply must be removed from the unit for it to be completely switched off.
- Never immerse the steriliser in water.
- Never use the steriliser without water.
- Do not use bleach or chemical sterilising solutions/tablets in your steam steriliser or on products to be sterilised.
- Do not use abrasive, anti-bacterial materials or scourers to clean the steriliser.
- Do not use softened water in the steriliser.
- The lead supplied must not be used on any other appliance and no other lead should be used with the iQ24 Steriliser.
- Failure to follow de-scaling instructions may cause irreparable damage.
- There are no serviceable parts inside the iQ24 Steriliser. Do not attempt to open, service or repair the iQ24 Steriliser yourself.
- CAUTION: This appliance is intended for use by responsible persons, keep out of the reach of small children and the infirm.
- This appliance is not intended for use by persons including children with reduced physical, sensory or mental capabilities, or lack of experience or knowledge, unless they have been given supervision or instruction concerning use of the appliance by a person responsible for their safety.
- Children should be supervised to ensure that they do not play with the appliance.

Care of your steriliser Guarantee

Using pre-boiled or filtered water in your iQ24 Steriliser can reduce limescale build up. You should de-scale your steriliser **every four weeks**, or as often as needed in hard water areas, to ensure it continues to work 100% effectively. Under no circumstances should anything other than citric acid or vinegar be used as it may cause irreparable damage. Avoid contact with eyes as this may cause irritation. Keep out of the reach of children.

EITHER:

1. Mix one sachet of citric acid (10gms) with 200ml of water*. Pour into the empty steriliser. Do not put lid on. Activate Mode 1 and leave for 1-2 minutes. Unplug and leave to stand for 30 minutes. Drain and rinse the inside of the steriliser. Then in Mode 1, run a full sterilising cycle empty with the lid on, using exactly 90ml of water. Drain and wipe dry.

OR:

2. Pour 100ml vinegar mixed with 200ml cold water into the steriliser. Allow to stand in the unit until any limescale has dissolved. Drain and rinse the inside of the steriliser thoroughly. Wipe dry.

*Citric Acid is available from most chemists – **avoid contact with eyes as this may cause irritation. Keep out of reach of children.**

Key to product base label



FOR INDOOR USE ONLY



EUROPEAN STANDARD



DISPOSE OF THROUGH SEPARATE COLLECTION ROUTE FOR WASTE ELECTRICAL EQUIPMENT

For our complete catalogue of mother and baby care products and breastfeeding video or DVD

GB: Call FREE on 0800 289 064

GB ONLY (9am–4.30pm Mon-Fri)

IRL: Call FREE on 1800 509 021

IRL ONLY (9am–4.30pm Mon-Fri)

AU: 1 300 364 474

(Australia National)

AVENT Ltd, Suffolk, CO10 7QS, England
(AVENT Ltd is a member of the Philips Group)

www.philips.com/AVENT

Philips of Holland. All logos brands and product names are trademarks or registered trademarks of their respective holders and are hereby recognised as such.

PHILIPS AVENT



iQ24 Electronic Steam Steriliser

Instructions for use

The Philips AVENT iQ24 Electronic Steam Steriliser is one of a new generation of intelligent products from Philips AVENT.

The iQ24 Steriliser uses the intensive heat of steam to eliminate harmful bacteria helping you sterilise your baby feeding equipment as safely and quickly as possible. There are two different modes for greater convenience:

Mode 1 (Optional six hour mode) runs a single 6 minute sterilising cycle, then keeps the contents sterile for 6 hours, providing the lid is not removed.

Mode 2 keeps contents sterile for up to 24 hours by continuously repeating the cycle, so you can have clean, sterile bottles day and night.

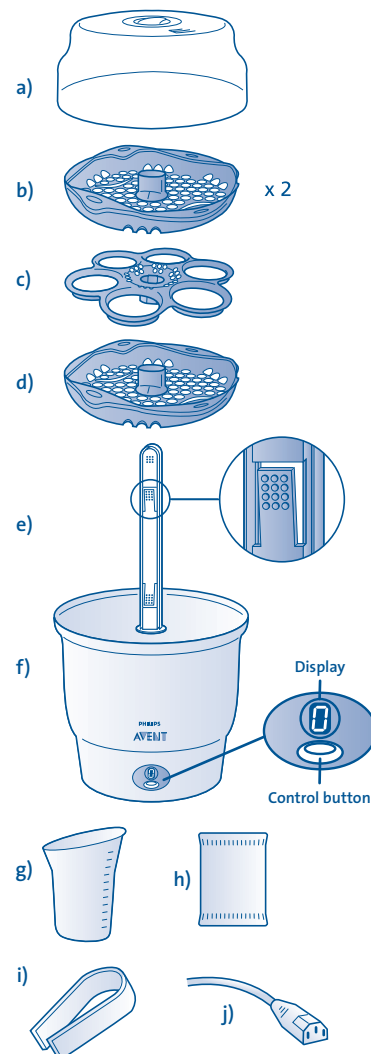
As well as bottles and breastfeeding accessories, you can sterilise any other boilable items (please refer to the manufacturer's instructions regarding sterilisation).

Please take a few minutes to read through the **ENTIRE INSTRUCTION LEAFLET** before using your iQ24 Steriliser for the first time. **PLEASE SAVE THESE INSTRUCTIONS.** Also available at www.philips.com/AVENT

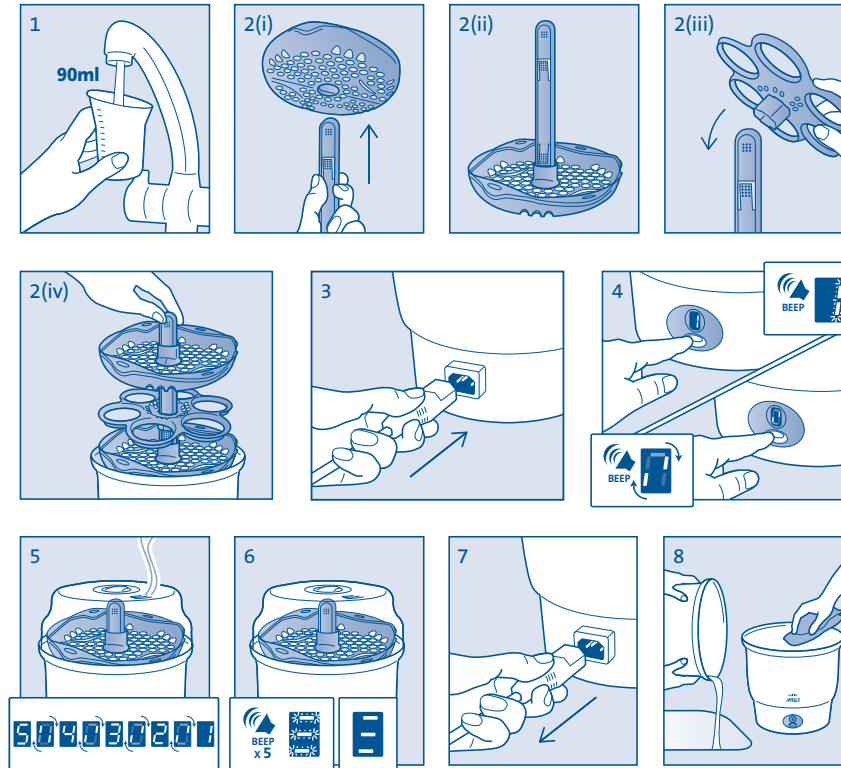
Contents

- Lid
- 2 x Upper basket
- Bottle rack
- Lower basket (same as b)
- Central stem
- Steriliser body
- Measuring Cup
- De-scaler (citric acid)
- Tongs
- Lead and plug

NB: Upper and lower baskets are identical



Before using your steriliser for the first time



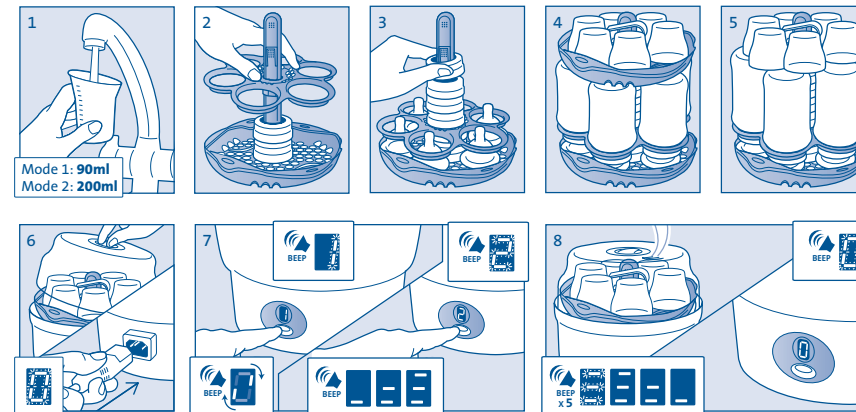
Remove all items from inside the steriliser body.

- Measure exactly 90ml of water and pour in.
- Assemble the blue components (baskets, stem and bottle rack) and place into the steriliser. Put the lid on.
- Connect the lead into the back of the steriliser and plug into the mains supply.
- The unit will display a flashing '0' to indicate you need to select a mode. One short press of the control button will display a flashing '1'. Hold the control button in for 2 seconds then release, and a rotating '0' is displayed. Mode 1 is now in progress.

- After the water has reached 100°C, it will turn to steam. When the sterilising cycle is almost complete a numerical countdown will be displayed (see 'Electronic Display Guide').
- At the end of the cycle the unit will beep 5 times. Three bars will flash and then remain displayed.
- Let the steriliser cool down for 3 minutes. Turn off at the mains, unplug, and disconnect the lead from the back of the steriliser.
- Remove the blue components and empty any remaining water from the unit. Wipe dry. The steriliser is now ready for use.

Sterilising in Mode 1 – 6 hour sterile period Sterilising in Mode 2 – 24 hour sterile period

To sterilise up to six 125ml, 260ml or 330ml AVENT Bottles*



Before each use, wash items to be sterilised in mild soapy water, and rinse.

- Measure and pour in exactly 90ml of water if selecting Mode 1 **OR** 200ml of water if selecting Mode 2.
- Slide the lower basket onto the central stem. Thread 2 screw rings onto the central stem. Slide the bottle rack down the central stem, with the neck facing down, until it rests on the top screw ring.
- Place the teats through the centre of the holes in the bottle rack onto the lower basket. Thread 4 screw rings onto the central stem.
- Place inverted bottles in the bottle rack and push the upper basket onto the central stem until it rests on the catch. Place dome caps and tongs into the upper basket.
- The upper basket is not required when sterilising 330ml bottles.**
- Place the assembled unit into the steriliser body and put the lid on. Put the lead into the back of the steriliser body and plug into the mains supply. A flashing '0' will appear, indicating that you need to select a mode.
- To select **Mode 1**, press the control button once and the mode number will be displayed. To run this mode, hold the control button in for 2 seconds, then release. A rotating '0' will be displayed. Mode 1 is now in progress.

OR

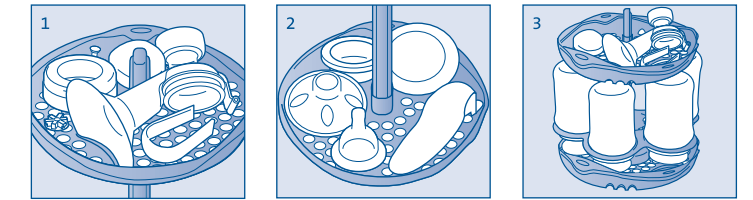
- To select **Mode 2**, press the control button twice and the mode number will be displayed. To run this mode, hold the control button in

- for 2 seconds, then release. Three ascending and descending bars will be displayed. Mode 2 is now in progress.
- Do not remove the lid until the 6 minute sterilising cycle has ended. This is indicated by 5 beeps and 3 bars being displayed. It is recommended to let the steriliser cool down for 3 minutes after the sterilising cycle has been completed. Items will remain sterile for up to 6 hours provided the lid is not removed. After 2 hours, the display will show 2 bars and, after a further 2 hours, one bar. To indicate the end of Mode 1 or 2, the unit will sound a long beep followed by a flashing '0' †. At this point items should be used immediately or re-sterilised. (Please refer to 'To remove sterilised items after a cycle' on page 5). Switch off at mains and unplug the lead from the back of the steriliser. Pour away any remaining water, rinse out the inside of the steriliser body and wipe dry.

† The end of a cycle is 6 hours after commencement of Mode 1 and 24 hours after commencement of Mode 2. The unit can be completely stopped at any time during a cycle, by pressing and holding in the control button for 2 seconds. The unit will beep and a flashing '0' will be displayed, indicating the unit has returned to selection mode.

* to sterilise the ISIS Breast Pump or other items please refer to page 5

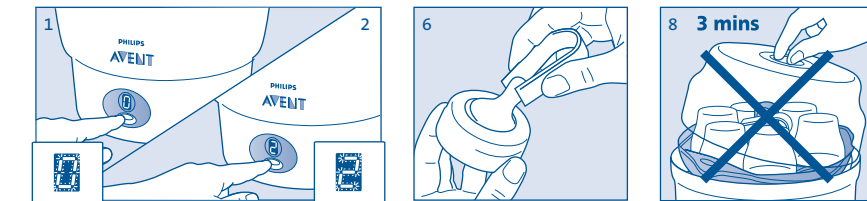
To load the Philips AVENT ISIS Manual Breast Pump



Before each use, wash items to be sterilised in mild soapy water, and rinse.

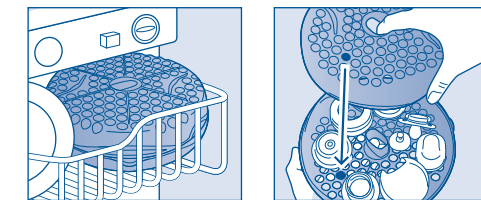
- Disassemble the ISIS Breast Pump and click the pump body into the slot in the upper basket and arrange the other breast pump components as shown.
- Place remaining components of the pump in the lower basket.
- Up to six 125ml or 260ml bottles (**not including screw rings, teats or dome caps**) can be sterilised with the pump.
- Follow sterilising instructions on page 4.

To remove sterilised items after a cycle



- When Mode 1 cycle is complete pressing the button will reset the unit.
- In Mode 2 (after sterilised) when 3x bars are displayed, pressing the button will pause the cycle, allowing removal/addition of item. Pressing the button again will resume the cycle (re-sterilise). The unit will immediately enter a new sterilisation phase and continue the 24 hour cycle from where it was interrupted. **If unplugged the 24hr cycle will stop.**
- Wash your hands thoroughly before removing the sterilised items.
- Remove the lid.
- If necessary, shake excess water from items before assembling.
- The tongs can be used to remove small items and to pull the sterile teats through the screw rings of the bottles.
- Removed items must be used/assembled immediately or re-sterilised. Expressed milk can be stored in a sterile breast milk container in the refrigerator for up to 48 hours (not in the door) or in the freezer for up to 3 months. Infant formula should be made up fresh for each feed.
- After each cycle the unit should be allowed to cool for at least 3 minutes before opening and removing parts. If after a Mode 1 cycle is run the unit must be allowed to cool for a minimum of 10 minutes prior to running another sterilisation cycle.**

Dishwasher Basket



Warning: Your Philips AVENT items may discolour over time if they are washed in the dishwasher with dirty items covered with remnants of strong sauces, such as tomato sauce.

- Two baskets can be clipped together to hold small items such as teats, breast pump parts etc. for washing in the **top** rack of your dishwasher prior to sterilisation.
- To clip together, align the baskets so that the indicators are opposite each other and snap the baskets together. To open, pull apart with fingers.