

**GB** call free on **0800 331 6015** (GB Only)

call free on **1800 744 5477** (IRL Only)

call on **1 300 364 474** (AUS)

**PL** LAKTATOR JEST URZĄDZENIEM HIGIENICZNYM,  
NIE PODLEGA WYMIANIE, ANI ZWROTOWI

W przypadku problemów w czasie użytkowania laktatora prosimy  
dzwonić do biura firmy Krotex-Poland; DYSTRYBUTOR: Philips Polska  
Sp. z o.o. Al. Jerozolimskie 195 B 02-222 Warszawa

Tel: **00800 311 1318**

**RU** Официальный дистрибьютор в России ОЛТРИ Трейдинг  
тел. **8-800-200-08-80 / 8 800-200-08-83**

консультации по вопросам грудного вскармливания  
Импортер: ООО "Филиппс", Российская Федерация, 119048 г.  
Москва, ул. Усачева, д. 35А. тел. 8 495 937 93 00

**HR** Želite li znati više o našim proizvodima, možda neki savjet ili  
želite da Vam pošaljemo katalog nazovite nas na broj telefona:

**01 336 9520**

Breast Pump BPA-free  
Nie zawiera bisfenolu A (% BPA)  
молокоотсос не содержит  
бисфенол-А  
Izdajalica - BPA 0%

[www.philips.com/AVENT](http://www.philips.com/AVENT)

Philips AVENT, a business of Philips Electronics UK Ltd.  
Philips Centre, Guildford Business Park, Guildford, Surrey, GU2 8XH

Изготовлено под контролем  
Philips Electronics UK Ltd., Гилдфорд Бизнес Парк, Гилдфорд,  
Суррей Джью2 8ЭксЭйч, Великобритания

Trademarks owned by the Philips Group.  
© Koninklijke Philips Electronics N.V. All Rights Reserved.

# PHILIPS AVENT



**GB** Manual breast pump

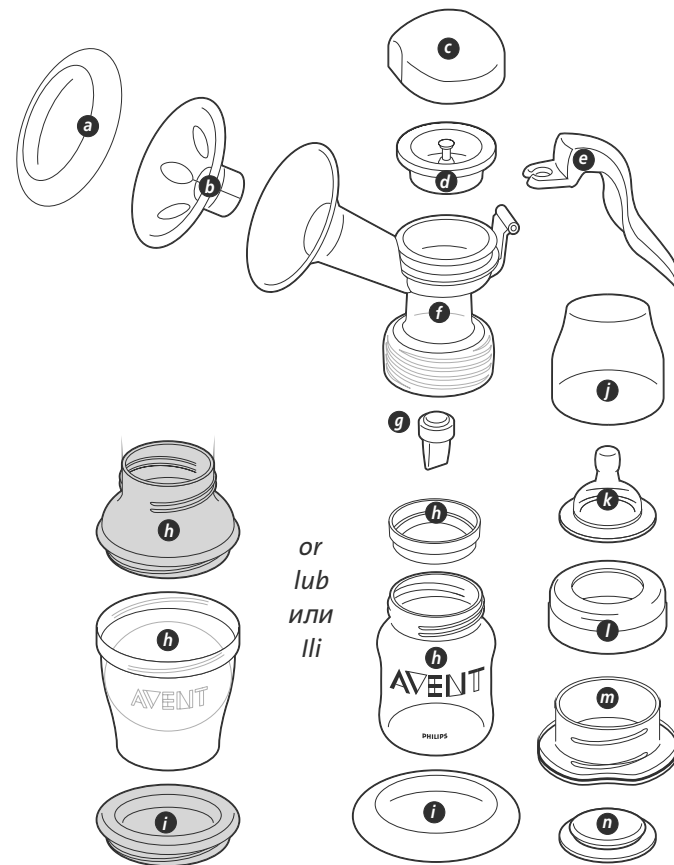
**PL** Laktator Ręczny

**RU** Ручной Молокоотсос

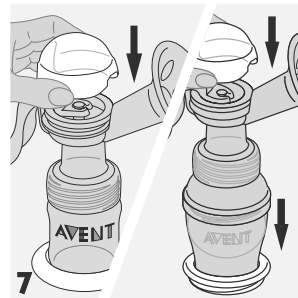
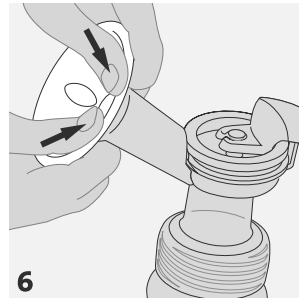
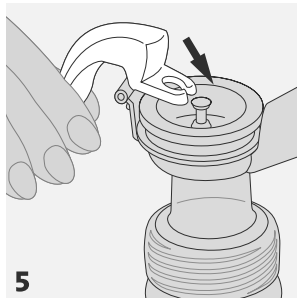
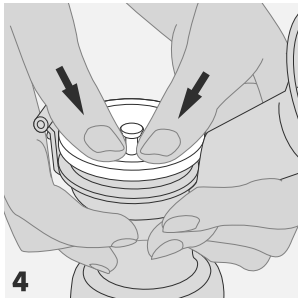
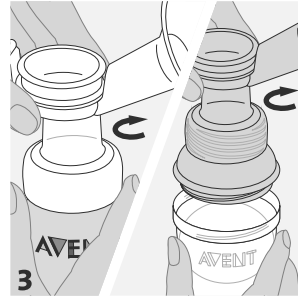
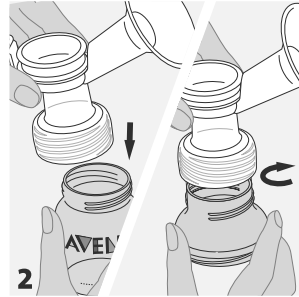
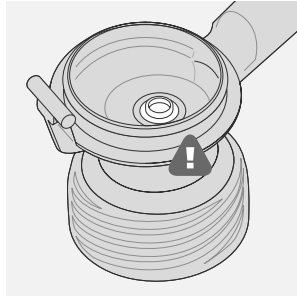
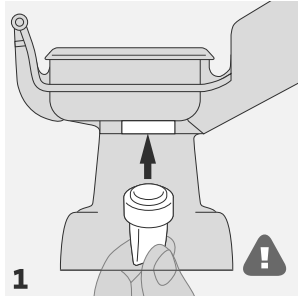
**HR** Ručna izdajalica



2.



## 6. (1) – (7)



**IMPORTANT: DO NOT LOSE THE WHITE VALVE. YOUR PUMP WILL NOT WORK WITHOUT IT OR IF IT IS FITTED INCORRECTLY.**  
If lost, spare valves are available direct from Philips AVENT.



**UWAGA: BIAŁY ZAWÓR NALEŻY PRZECHOWYWAĆ W BEZPIECZNYM MIEJSCU. LAKTATOR NIE BĘDZIE DZIAŁAĆ BES ZAWÓRU (LUB GDY ZAWÓR ZOSTANIE NIEPRAWIDŁOWO ZAMOCOWANY).** W przypadku jego zgubienia zapasowe zawory można nabyć bezpośrednio w firmie Philips AVENT.



**ВНИМАНИЕ! При утере или неправильной установке клапана насоса работа молокоотсоса невозможна! При утере клапана вы можете приобрести новый в сервисном центре Philips AVENT.**



**VAŽNO: BIJELI VENTIL NE SMIJETE IZGUBITI. VAŠA IZDAJALICA NEĆE RADITI AKO NEMA BIJELOG VENTILA ILI JE ON NEPRAVILNO POLOŽEN.** Ukoliko ga ipak izgubite, rezervni dio moguće je naručiti na broj telefona : 01 33 69 520, e-mail: kadulja-a-m@zg.t-com.hr

Please take five minutes to read through the **WHOLE** of this leaflet **BEFORE** you use your Philips AVENT manual breast pump for the first time.

## Contents

1. Introducing the manual breast pump
2. Detailed parts guide
3. Cleaning and sterilisation
4. Keeping your breast pump sterile for travel
5. Using the manual breast pump with the AVENT VIA storage system
6. How to assemble the manual breast pump
7. When to express milk
8. Hints to help you succeed
9. How to use the manual breast pump
10. Storing your breast milk
11. Feeding your baby your expressed breast milk
12. Choosing the right teat for your baby
13. Troubleshooting guide

Should you ever lose these instructions, they are available on our website: [www.philips.com/AVENT](http://www.philips.com/AVENT)