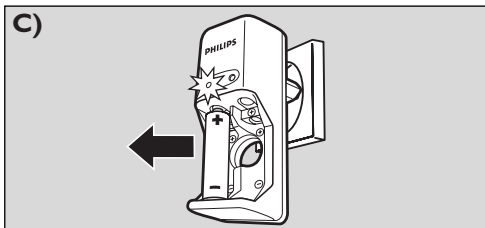
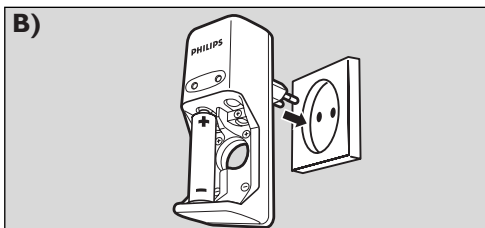
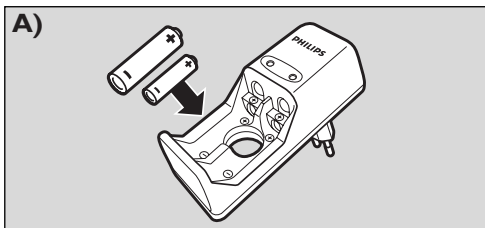


SCB1205NB SCB1235NB SCB1280NB



EN	User manual
FR	Mode d'emploi
ES	Instrucciones de manejo
DE	Bedienungsanleitung
NL	Gebruiksaanwijzing
IT	Istruzione per l'uso
PT	Manual de utilização
GR	Οδηγίες χρήσεως
TR	Kullanım talimatları
DK	Veiledning
SV	Bruksanvisning
FI	Käyttöohje
PL	Instrukcja obsługi
CS	Návod k použití
SK	Užívateľská príručka
HU	Használati utasítás
RU	Инструкции по использованию



D) Battery charging times:

Battery type	Battery capacity (mAh)	Approx. charging time
AA Ni-MH	2450 mAh	16 hrs
AA Ni-MH	2100 mAh	13 3/4 hrs
AA Ni-MH	1300 mAh	8 1/2 hrs
AAA Ni-MH	1000 mAh	13 1/2 hrs
AAA Ni-MH	800 mAh	10 1/2 hrs
AAA Ni-MH	700 mAh	9 hrs

Specifications

Input voltage	AC 220-240V, 50/60Hz, 6V	
Output voltage	AA AAA	1.4V x 2 1.4V x 2
Charging current	AA AAA	170 - 200mA 80 - 100mA

Important Safety Instructions:

Save these instructions - this manual contains important safety and operating instructions for this charger. Before using your charger read all instructions and cautionary markings on the charger, the batteries to be charged and the products that use the batteries.

Warning:

- Use to charge AA (1.2V, 600 - 2500 mAh, Ni-MH/Ni-Cd) and AAA (1.2V 100 - 1000 mAh, Ni-MH/Ni-Cd) rechargeable batteries only. For environmental reasons we advise the use of Ni-MH batteries only. Do not charge Alkaline, Zinc Carbon, Lithium or any other type of battery not specified on the charger. Other types of batteries might burst or leak causing personal injury.
- For proper battery insertion, please observe pole indications (+/-). See fig. A.
- Do not dispose of in fire, short circuit or open.
- Charge new batteries before using.
- Never alter the plug.
- Do not operate the charger if it has been subjected to shock or if it is damaged.
- Do not disassemble the charger.
- To avoid risk of electric shock, unplug the charger from the electrical outlet before cleaning or when not in use.
- This battery charger is for indoor use only. Do not expose the charger to rain or excessive moisture. Keep the charger away from dust and dirt, which can cause premature wear of parts or harm its normal operation.
- Never use the charger as a power source for any electrical equipment.
- Do not incinerate, disassemble or short circuit batteries since they may burst or release toxic materials.
- This charger is not intended for use by young children or infirm persons without supervision.
- Do not operate the charger if the plug is damaged.
- Do not charge AAA and AA batteries in the same slot.
- Do not charge damaged or leaking batteries.
- Charge Ni-Cd and Ni-MH batteries separately.
- Remove the batteries from the charger before it is scrapped. Dispose of the batteries safely.

Care:

- Wipe the charger with a damp cloth occasionally without harsh chemicals, cleaning solvents or strong detergents.
- Charger and batteries must be disposed of separately. Inform yourself about the separate collection system for electrical and electronic products.

Operating instructions

General charging guidelines

- At the same time you can charge one or two AA or AAA batteries or one AA and one AAA battery.
- For long battery life, only charge empty batteries.
- When charging, ambient temperature should be between 0°C and 40°C (32°F and 104°F).
- You can charge batteries with different capacity (mAh) and size (AA/AAA) at the same time.

Note: it is normal for the unit and the batteries to become warm while charging.

Charging batteries

- 1 Insert batteries into the charger. See fig. A.
- 2 Plug the charger into a wall outlet. See fig. B.
> The green charge LED(s) will illuminate, indicating that charging is in progress. The LED(s) will remain lit until charging is stopped manually.
- 3 When finished, unplug the charger from the power source and remove the batteries. See fig. C. Always unplug between charges!

Battery charging times: See fig. D.

Charging times are for reference only as they may differ per brand and performance of batteries as well as environmental conditions at the time of charging.

Visit our website at: www.philips.com
Philips Consumer Electronics
P.O. Box 80002
5600 JB Eindhoven
The Netherlands