

Always there to help you

Register your product and get support at
www.philips.com/welcome

GoGEAR

Question?
Contact
Philips

SA4CLP02

SA4CLP04



User manual

PHILIPS

Contents

1	Important safety information	2
	General maintenance	2

2	Your new player	5
	What's in the box	5
	PC software for the player	5
	Files loaded on the player	5
	Overview	5
	Controls	5
	LED indicator and audio feedback	6
	Use the clip	6

3	Get started	7
	Charge power	7
	Switch the player on or off	7
	Automatic standby and shut-down	7

4	Play music	8
	Transfer music to the player	8
	Play music	8
	Switch the random play on or off	8
	Search for a song	9
	Select sound options	9

5	Sync with PC music library through Philips Songbird	10
	Install Philips Songbird	10
	Collect music files from the PC	10
	Set the watch folder	10
	Import music files	11
	Sync the player with Philips Songbird	12
	Select auto or manual sync	12
	Auto sync	12
	Manual sync	12

6	Update the firmware through Philips Device Manager	14
----------	---	-----------

7	Troubleshooting	16
----------	------------------------	-----------

8	Technical data	17
	PC requirements	17

Need help?

Please visit

www.philips.com/welcome

where you can access a full set of supporting materials such as the user manual, the latest software updates, and answers to frequently asked questions.

1 Important safety information

General maintenance

The translation of this document is for reference only.

In the event of any inconsistency between the English version and the translated version, the English version shall prevail.

! Caution

- To avoid damage or malfunction:
- Do not expose the product to excessive heat caused by heating equipment or direct sunlight.
- Do not drop the product or allow objects to fall on your player.
- Do not allow the product to be submerged in water; Do not expose headphone socket or battery compartment to water; as water entering the set may cause major damage.
- Active mobile phones in the vicinity may cause interference.
- Back up your files. Ensure that you retain the original files you have downloaded to your device. Philips is not responsible for any loss of data if the product becomes damaged or not readable / legible.
- Manage (transfer; delete, etc.) your music files only with the supplied music software to avoid problems.
- Do not use any cleaning agents containing alcohol, ammonia, benzene, or abrasives as these may harm the product.
- Batteries (battery pack or batteries installed) shall not be exposed to excessive heat such as sunshine, fire or the like.
- Danger of explosion if battery is incorrectly replaced. Replace only with the same or equivalent type.

About operating and storage temperatures

- Operate in a place where temperature is always between 0 and 35°C (32 to 95°F)
- Store in a place where temperature is always between -20 and 45°C (-4 to 113°F).

- Battery life may be shortened in low temperature conditions.

Replacement parts/accessories:

Visit www.philips.com/support to order replacement parts/accessories.

Hearing Safety



Listen at a moderate volume:

Using headphones at a high volume can impair your hearing. This product can produce sounds in decibel ranges that may cause hearing loss for a normal person, even for exposure less than a minute. The higher decibel ranges are offered for those that may have already experienced some hearing loss.

Sound can be deceiving. Over time your hearing 'comfort level' adapts to higher volumes of sound. So after prolonged listening, what sounds 'normal' can actually be loud and harmful to your hearing. To guard against this, set your volume to a safe level before your hearing adapts and leave it there.

To establish a safe volume level:

Set your volume control at a low setting. Slowly increase the sound until you can hear it comfortably and clearly, without distortion.

Listen for reasonable periods of time:

Prolonged exposure to sound, even at normally 'safe' levels, can also cause hearing loss.

Be sure to use your equipment reasonably and take appropriate breaks.

Be sure to observe the following guidelines when using your headphones.

Listen at reasonable volumes for reasonable periods of time.

Be careful not to adjust the volume as your hearing adapts.

Do not turn up the volume so high that you can't hear what's around you.

You should use caution or temporarily discontinue use in potentially hazardous situations.

Do not use headphones while operating a motorized vehicle, cycling, skateboarding, etc.; it may create a traffic hazard and is illegal in many areas.

Modifications

Modifications not authorized by the manufacturer may void user's authority to operate the product.

Copyright information

All other brands and product names are trademarks of their respective companies or organizations.

Unauthorized duplication of any recordings whether downloaded from the Internet or made from audio CDs is a violation of copyright laws and international treaties.

The making of unauthorized copies of copy-protected material, including computer programs, files, broadcasts and sound recordings, may be an infringement of copyrights and constitute a criminal offense. This equipment should not be used for such purposes.

The Windows Media and the Windows logo are registered trademarks of Microsoft Corporation in the United States and/or other countries.

Be responsible! Respect copyrights.



Philips respects the intellectual property of others, and we ask our users to do the same. Multimedia content on the internet may have been created and/or distributed without the original copyright owner's authorization. Copying or distributing unauthorized content may violate copyright laws in various countries including yours. Compliance with copyright laws remains your responsibility.

The recording and transfer to the portable player of video streams downloaded to your computer is intended only for use with public domain or properly licensed content. You may only use such content for your private, non-commercial use and shall respect eventual copyright instructions provided by the copyright owner of the work. Such instruction may state that no further copies shall be made. Video streams may include copy protection technology that prohibits further copying. For such situations the recording function will not work and you will be notified with a message.

Data logging

Philips is committed to improving the quality of your product and enhancing the Philips user experience. To understand the usage profile of this device, this device logs some info / data to the non-volatile memory region of the device. These data are used to identify and detect any failures or problems you as a user may experience while using the device. The data stored, for example, will be the duration of playback in music mode, duration of playback in tuner mode, how many times battery low was encountered, etc. The data stored do not reveal the content or media used on the device or the source of downloads. The data stored on the device are retrieved and used ONLY if the user returns the device to the Philips service center and ONLY to simplify error detection and prevention. The data stored shall be made available to user on user's first request.

Monkey's Audio decoder

- ① **The Monkey's Audio SDK and source code can be freely used to add APE format playback, encoding, or tagging support to any product, free or commercial. Use of the code for proprietary efforts that don't support the official APE format require written consent of the author.**

- ② **Monkey's Audio source can be included in GPL and open-source software, although Monkey's Audio itself will not be subjected to external licensing requirements or other viral source restrictions.**
- ③ **Code changes and improvements must be contributed back to the Monkey's Audio project free from restrictions or royalties, unless exempted by express written consent of the author.**
- ④ **Any source code, ideas, or libraries used must be plainly acknowledged in the software using the code.**
- ⑤ **Although the software has been tested thoroughly, the author is in no way responsible for damages due to bugs or misuse.**

If you do not completely agree with all of the previous stipulations, you must cease using this source code and remove it from your storage device.

FLAC decoder

Copyright (C) 2000,2001,2002,2003,2004,2005, 2006,2007,2008,2009 Josh Coalson

Redistribution and use in source and binary forms, with or without modification, are permitted provided that the following conditions are met:

- Redistributions of source code must retain the above copyright notice, this list of conditions and the following disclaimer.
- Redistributions in binary form must reproduce the above copyright notice, this list of conditions and the following disclaimer in the documentation and/ or other materials provided with the distribution.

- Neither the name of the Xiph.org Foundation nor the names of its contributors may be used to endorse or promote products derived from this software without specific prior written permission.

THIS SOFTWARE IS PROVIDED BY THE COPYRIGHT HOLDERS AND CONTRIBUTORS "AS IS" AND ANY EXPRESS OR IMPLIED WARRANTIES, INCLUDING, BUT NOT LIMITED TO, THE IMPLIED WARRANTIES OF MERCHANTABILITY AND FITNESS FOR A PARTICULAR PURPOSE ARE DISCLAIMED. IN NO EVENT SHALL THE FOUNDATION OR CONTRIBUTORS BE LIABLE FOR ANY DIRECT, INDIRECT, INCIDENTAL, SPECIAL, EXEMPLARY, OR CONSEQUENTIAL DAMAGES (INCLUDING, BUT NOT LIMITED TO, PROCUREMENT OF SUBSTITUTE GOODS OR SERVICES; LOSS OF USE, DATA, OR PROFITS; OR BUSINESS INTERRUPTION) HOWEVER CAUSED AND ON ANY THEORY OF LIABILITY, WHETHER IN CONTRACT, STRICT LIABILITY, OR TORT (INCLUDING NEGLIGENCE OR OTHERWISE) ARISING IN ANY WAY OUT OF THE USE OF THIS SOFTWARE, EVEN IF ADVISED OF THE POSSIBILITY OF SUCH DAMAGE.

2 Your new player

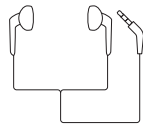
What's in the box

Make sure that you have received the following items:

Player



Earphones



USB cable



Quick start guide



Safety and Warranty sheet



Note

- The images serve as reference only. Philips reserves the right to change color/design without notice.

PC software for the player

The following PC software can work with **SoundClip**:

- Philips Songbird** (helps you manage your media library on a PC and the player)
- Philips Device Manager** (helps you get firmware updates and recover the player)

To get **Philips Songbird** and **Philips Device Manager** online,

- On your PC, download from www.philips.com/Songbird or www.philips.com/support.

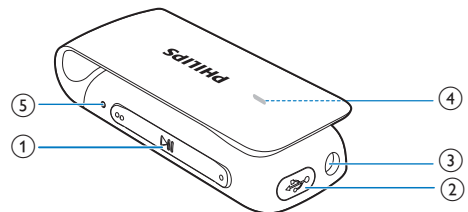
Files loaded on the player

The following files are loaded on **SoundClip**:


- User manual
- Frequently asked questions

Overview

Controls



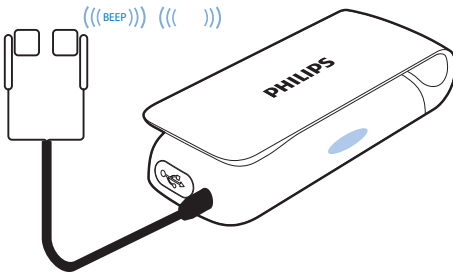
- ▶▶**
 - Press and hold: Switch the player on or off
 - Press: Pause/ resume play
 - Press twice during play: Switch the random play on or off
- / ●**
 - Press: Increase or decrease the volume
 - Press and hold: Skip to the previous or next song
 - Press and hold the two buttons together to switch **FullSound** on or off

- ② **USB connector for power charging and data transfer**
- ③ 
 - 3.5 mm-headphone connector
- ④ **LED indicator**
- ⑤ **RESET**
 - Press the hole by using the tip of a ball pen when the player does not respond to the pressing of keys

LED indicator and audio feedback

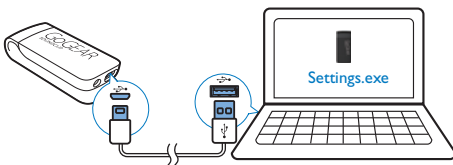
You can know the status of the player through

- the LED indicator; and/ or
- the audio feedback, such as beeps and voice reminders.



Select languages for the voice feedback

With **Settings.exe**, you can select languages for the voice feedback.



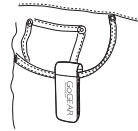
- 1 On your PC, install Philips Device Manager (see 'Update the firmware through Philips Device Manager' on page 14).
 - ↳ The **Settings.exe** icon is displayed on the desktop of your PC.
- 2 Connect **SoundClip** to the PC.

- 3 On the PC, launch **Settings.exe**.
 - ↳ A pop-up screen is displayed.
- 4 Select your language for the voice feedback.



Use the clip

Use the clip to secure the player on your pocket, clothes, or elsewhere as needed.

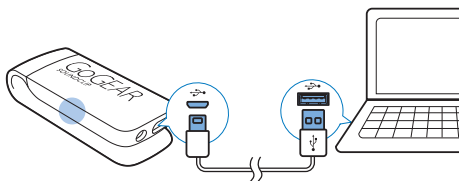


3 Get started

Charge power

SoundClip has a built-in battery that can be charged through the USB connector of a computer.

- Use the USB cable to connect **SoundClip** to a PC.
 - ↳ When the battery level is less than 30%, the red indicator is always on.
 - ↳ During power charging, the indicator flashes and changes its color to denote the change of battery level.
 - ↳ When the battery is full, the green indicator is on and stops flashing.

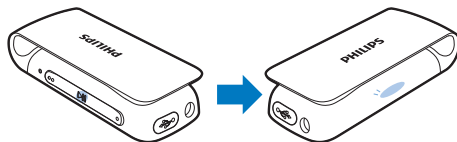


Tip

- When the battery is low, the red indicator flashes twice at intervals.
- Rechargeable batteries have a limited number of charge cycles. Battery life and number of charge cycles vary by use and settings.

Switch the player on or off

- Press and hold **▶||** until the green or red indicator lights up.
 - ↳ **Power on:** The green indicator lights up. Music play starts.
 - ↳ **Power off:** The red indicator lights up.

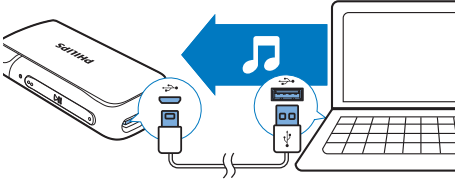


Automatic standby and shut-down

The player has an automatic standby and shut-down feature that can save battery power: After five minutes in idle mode (no play, no button is pressed), the player switches off.

4 Play music

Transfer music to the player



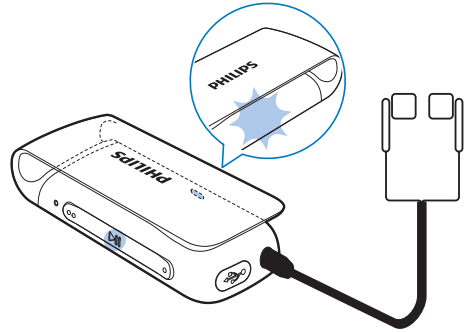
You can transfer music from your PC media library to **SoundClip** in the following ways:

- Drag and drop music files in Windows Explorer;
- Sync through Philips Songbird (see 'Sync with PC music library through Philips Songbird' on page 10).
 - ↳ When music transfer is ongoing, the indicator flashes in red or green alternately.

To drag and drop music files in Windows Explorer,

- 1 Connect **SoundClip** to a PC.
- 2 On the PC, under **My Computer** or **Computer**,
 - drag and drop music files from the PC to **SoundClip**.

Play music

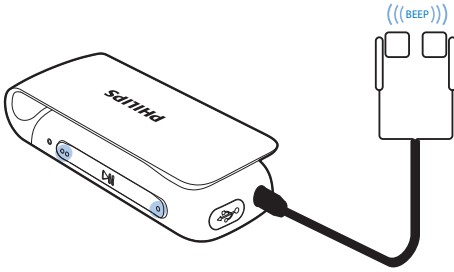


- 1 Make sure that you have switched on the player (see 'Switch the player on or off' on page 7).
 - ↳ The green indicator lights up. Music play starts.
 - ↳ During music play, the green indicator flashes at intervals.
- 2 Press **▶||** to pause or resume play.
 - ↳ When music play pauses, the green indicator flashes twice at intervals.

Switch the random play on or off

- During music play, press **▶||** twice.
 - ↳ Each time you press a button, the LED indicator flashes once.
 - ↳ You hear the voice feedback.
 - ↳ Random play on: Songs play in random.
 - ↳ Random play off: Songs play in sequence.

Search for a song



- Press and hold ● ● / ● to skip to the previous or next song.
↳ Beeps sound.

Select sound options

Change the volume level

- Press ● ● / ●.
↳ During music play, you hear the change of volume level.

Switch FullSound on or off

FullSound restores the sonic details that music compression loses (e.g. MP3, WMA).

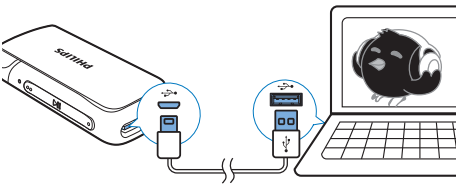
- During music play, press and hold ● ● and ● together.
↳ You hear the voice feedback.

5 Sync with PC music library through Philips Songbird

With **Philips Songbird**, you can do the following:

- Manage your music collection on a PC;
- Sync **SoundClip** with your PC music library;
- Register **SoundClip** on www.philips.com/welcome.

Install Philips Songbird



- 1 Connect **SoundClip** to a PC.
- 2 On the PC, select **My Computer** (Windows XP / Windows 2000) / **Computer** (Windows Vista / Windows 7).
- 3 Right click on the **Philips GoGear** SoundClip icon. Select **Download Philips Songbird**.
 - Alternatively, click the **Philips GoGear** SoundClip icon. Double click the **setup.exe**.
- 4 Follow the onscreen instructions to complete the installation.

Note

- The installation requires you to agree to the license terms.

Collect music files from the PC

Set the watch folder

Create a central folder

You can have all music files automatically added to your library when you copy them to a folder. Creating a central folder is recommended. In

Philips Songbird, set the central folder as the watch folder. Each time you launch **Philips Songbird**, songs are added to/ removed from **Philips Songbird** as they are on the central folder.

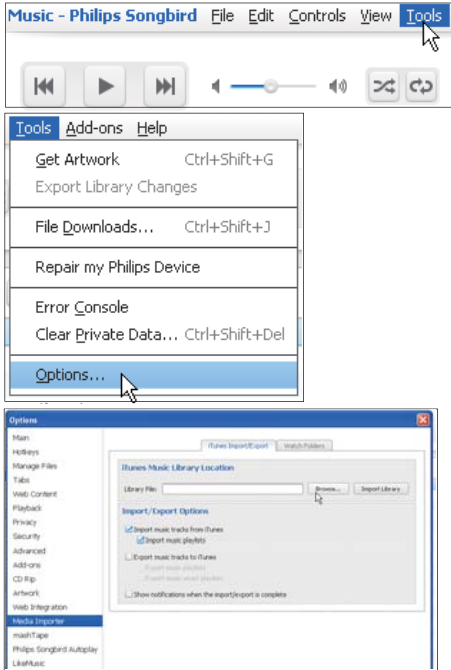
On the PC, create a central folder to save all music files, for example, D:\Songbird media.

First-time launch

The first time you launch **Philips Songbird** on a PC, do the following as prompted to import existing media files into **Philips Songbird**:

- Select the iTunes media folder to import an existing iTunes library;
- Select the central folder to search and import the existing music files.
 - ↳ The central folder is set as the watch folder of **Philips Songbird**.

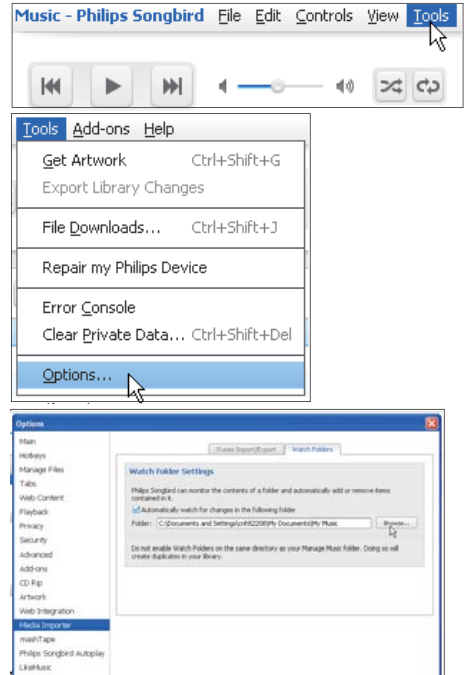
Set iTunes media folder



- 1 On Philips Songbird, go to **Tools > Options...**
- 2 Select **Media Importer**, and then the **iTunes Importer** tab.
- 3 Verify your library location and options.
- 4 Click the **Import Library** button next to the library location.
↳ The software imports the iTunes library into **Philips Songbird**.

Set the watch folder

In Philips Songbird, set the watch folder as follows:



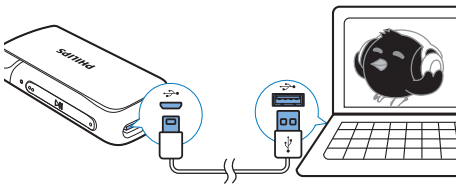
- 1 Select **Tools > Options**.
- 2 In **Options**, select **Media Importer**. Then, select the **Watch Folders** tab.
- 3 In **Watch Folders**, tick the check box as shown.
- 4 Click **Browse**, and select the central folder (e.g. D:\Songbird media) as the watch folder.
↳ In **Philips Songbird**, media files are added or removed as they are in the central music folder.

Import music files

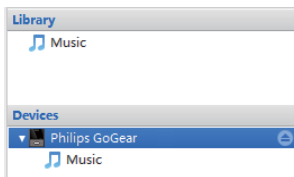
In Philips Songbird,

- go to **File > Import Media** to select folders on the PC.
↳ Music files are added under **Library**.

Sync the player with Philips Songbird



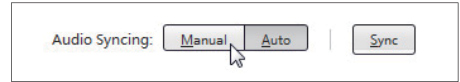
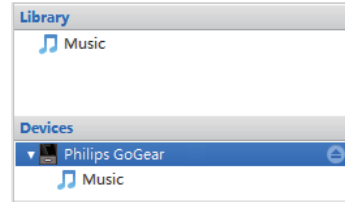
- 1 On the PC, launch **Philips Songbird**.
- 2 Connect the player to the PC.
↳ On **Philips Songbird**, the player is displayed when it is recognized by the PC.



Select auto or manual sync

The first time you connect the player to **Philips Songbird**, select auto sync as prompted. The player sync with **Philips Songbird** automatically. If you do not select auto sync, you switch on the manual sync.

To select auto or manual sync,



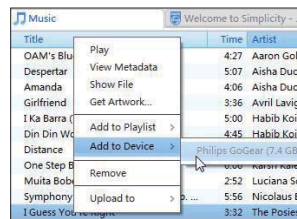
- 1 Select the player under **Devices**.
↳ A pop-up screen is displayed.
- 2 On the pop-up screen, select **Manual** or **Auto**.
- 3 To confirm the option, click **Apply**.

Auto sync

- If you have selected auto sync, auto sync starts automatically when you connect the player to a PC;
- Alternatively, select the player under **Devices**, and click **Sync**.

Manual sync

To transfer selected media files manually,



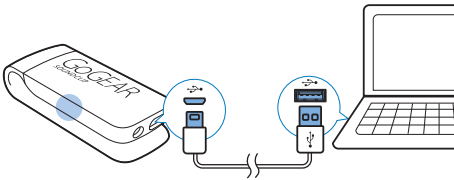
- 1 On the Content pane, right click on a selected media file.
- 2 Select **Add to Device > SoundClip**.
 - ↳ Selected files are transferred to **SoundClip**.



- To select multiple files at the same time, hold down the **Ctrl** button when you click options.

6 Update the firmware through Philips Device Manager

Install Philips Device Manager



- 1 Connect **SoundClip** to a PC.
- 2 On the PC, select **My Computer** (Windows XP / Windows 2000) / **Computer** (Windows Vista / Windows 7).
- 3 Right click on the **Philips GoGear SoundClip** icon. Select **Install Philips Device Manager**.
 - Alternatively, click the **Philips GoGear SoundClip** icon. Double-click the **installer.exe**.
- 4 Follow the onscreen instructions to complete the installation of the software.

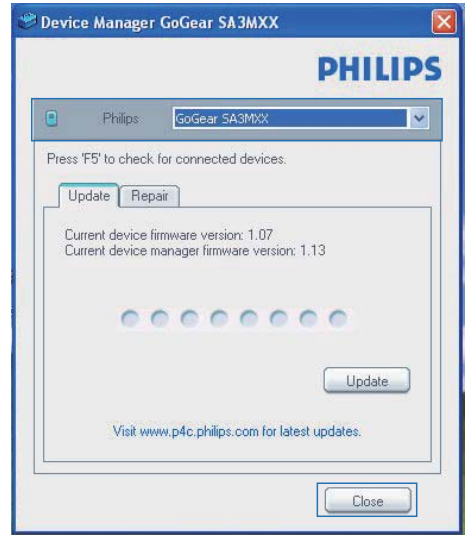
Note


- The installation requires you to agree to the license terms.

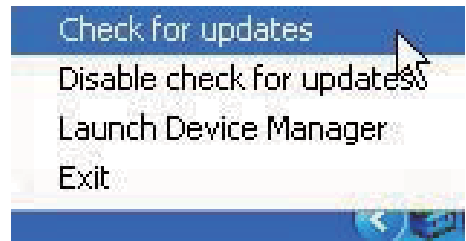
Check for firmware updates

- 1 Make sure that you have connected your PC to the Internet.
- 2 Launch **Philips Device Manager**.
↳ A dialog box is displayed.
- 3 Connect **SoundClip** to your PC.

- ↳ When the device is connected, "SA4CLPXX" is displayed on the text box.
- ↳ You can find current firmware version of the device.



- 4 To check for firmware updates,
 - ① Close the dialog box of Philips Device Manager.
 - ② At the base of the PC screen, right click  and select **Check for updates**.



- ↳ **Philips SA4CLPXX Device Manager** checks for updates from the Internet.

Update the firmware



- 1 When the firmware update is available, follow the onscreen instructions to download and install the firmware.
- 2 Disconnect **SoundClip** from the PC.
 - ↳ **SoundClip** restarts after the firmware is updated and is ready for use again,

7 Troubleshooting

If **SoundClip** is not working properly or the display freezes, you can reset it without losing data:

How do I reset SoundClip?

- Insert a pen tip or other object into the reset hole on **SoundClip**. Hold until the player shuts down.
- If the reset option is unsuccessful, recover **SoundClip** through **Philips Device Manager**:

- 1** On your PC, launch **Philips Device Manager**.
- 2** Enter the recovery mode:
 - ①** Switch off **SoundClip**.
 - ②** Press and hold the volume button  , and then, connect **SoundClip** to your PC.
 - ③** Keep holding the button until **Philips Device Manager** recognizes **SoundClip** and enters the recovery mode.
- 3** Start the recovery process:
 - ①** On **Philips Device Manager**, click the **Repair** button. Follow the onscreen instructions to complete the recovery process.
 - ②** When the recovery is completed, disconnect **SoundClip** from your PC.
- 4** Restart **SoundClip**.

8 Technical data

Power

- Power supply: 95 mAh Li-ion polymer internal rechargeable battery
- Play time¹
Audio (.mp3): up to 8 hours
- Fast charging: 6-minute charging for 60-minute play

Software

- **Philips Songbird:** To transfer music
- **Philips Device Manager:** To update the firmware and recover the player

Connectivity

- Headphone 3.5 mm
- USB 2.0 High speed

Sound

- Channel separation: 45 dB
- Frequency Response: 20-18,000 Hz
- Output power: 2 x 2.4 mW
- Signal to noise ratio: > 84 dB

Audio playback

Supported formats:

- MP3
Bitrate: 8-320 kbps and VBR
Sampling rates: 8, 11.025, 16, 22.050, 32, 44.1, 48 kHz
- WMA (unprotected)
Bitrate: 5-320 kbps
Sampling rates: 8, 11.025, 16, 22.050, 32, 44.1, 48 kHz
- WAV
- Flac
- Ape

Storage media

Built-in memory capacity²:

- SACLP02 2 GB NAND Flash
- SACLP04 4 GB NAND Flash

Media transfer³

- Windows Explorer (drag and drop)
- Songbird (sync)

Note

- Specifications are subject to change without notice.
- ¹ Rechargeable batteries have a limited number of charge cycles. Battery life and number of charge cycles vary by use and settings.
- ² 1 GB = 1 billion bytes; available storage capacity is less. Full memory capacity may not be available as some memory is reserved for the player. Storage capacity is based on 4 minutes per song and 128-kbps MP3 encoding.
- ³ Transfer speed depends on operating system and software configuration.

PC requirements

- Windows® XP (SP3 or above) / Vista / 7
- Pentium III 800 MHz processor or higher
- 512 MB RAM
- 500 MB hard disk space
- Internet connection
- Windows® Internet Explorer 6.0 or later
- CD-ROM drive
- USB port

