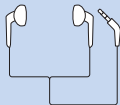
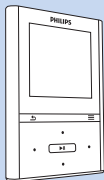



# Quick start guide

Przewodni szybkiego startu  
Guía de inicio rápido  
Snabbstartsinstruktioner  
Schnellstartanleitung  
Quick start guide  
Stručný návod k rychlému použití  
คู่มือเริ่มต้นใช้งานอย่างย่อ 快速入门指南  
Guide de démarrage rapide  
Handleiding voor snel gebruik  
快速入門指南 Hızlı Başlama Kılavuzu  
Guida di riferimento rapido  
Быстрый запуск  
Guia para início rápido

**PHILIPS**

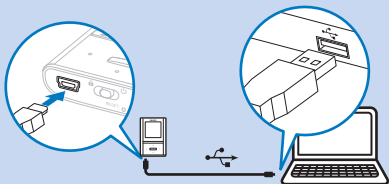


 2000 / XP / Vista / 7

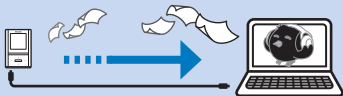


www

# 1



# 2



This section shows the installation process across two operating systems:

- Windows XP:** A screenshot of the Start menu with the 'All Programs' folder open. The 'Philips Songbird - Install' application is highlighted. A blue box labeled 'XP' is in the top right corner.
- Windows Vista:** A screenshot of the Start menu with the 'All Programs' folder open. The 'Philips Songbird - Uninstall' application is highlighted. A blue box labeled 'Vista' is in the top right corner.

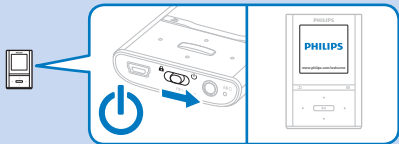
An arrow points from the Vista screenshot to a final product box:

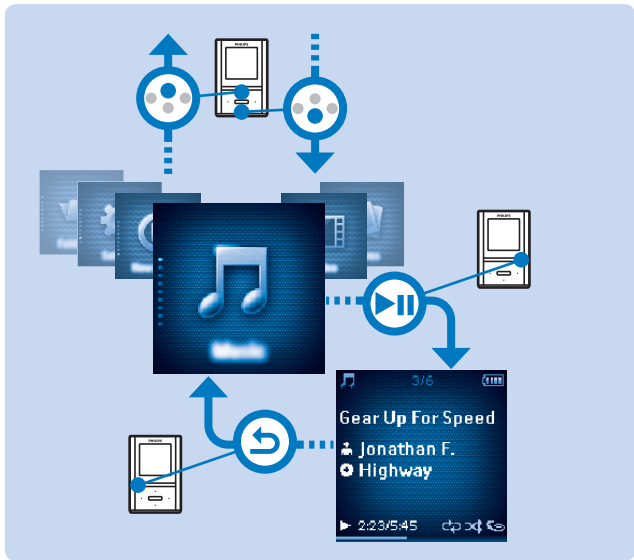
- PHILIPS Songbird:** A box containing the Philips logo, the text 'Philips Songbird', and an image of the software's globe icon.

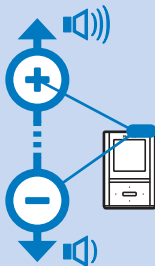
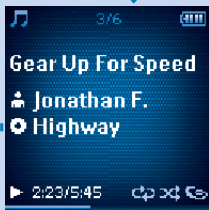
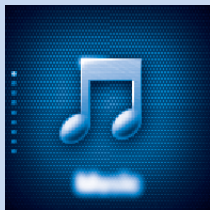
3

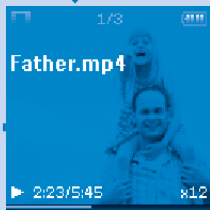
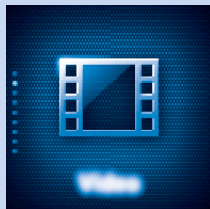


4

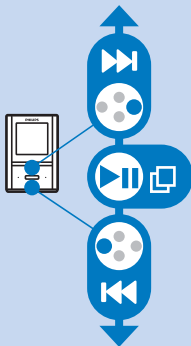
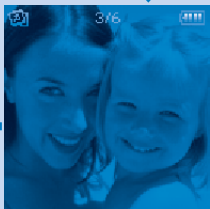
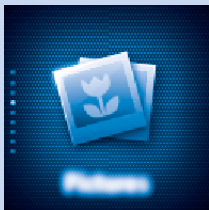


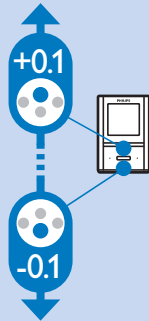
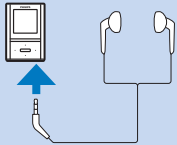


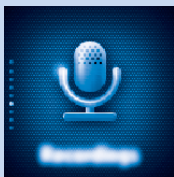














Be responsible  
Respect copyrights

Specifications are subject to change without notice.

Trademarks are the property of Koninklijke Philips Electronics N.V. or their respective owners

© 2010 Koninklijke Philips Electronics N.V.

All rights reserved.

[www.philips.com](http://www.philips.com)



Printed in China  
wk10211

SA2VBE\_00\_QSG\_V1.1