

# PHILIPS

Wet and dry electric shaver

Shaver series 9000

V-Track blade system PRO

8-direction  
ContourDetectHeads

SmartClean System Plus

SmartClick precision trimmer



S9531/26



## Perfection in every pass

Cuts up to 20% more hair\* in a single pass

The Shaver 9000 is our most advanced shaver yet. The unique contour detect technology offers exceptional coverage over every contour of your face, and the V-Track system guides hairs into the best cutting position for the closest results.

### Designed for perfection

- Our best shaving system on 1-3 day beard
- Heads flex in 8 different directions for a superb result

### A comfortable shave

- Personalize your shave by choosing between three settings
- Get a comfortable dry or refreshing wet shave with Aquatec

### Get the most of your shaver

- Keep your shaver like new with SmartClean
- Click-on trimmer for perfect mustache and sideburn trimming

### Easy to use

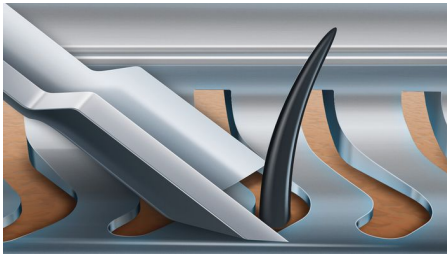
- Monitor shaver functions at a glance
- 50 minutes cordless shaving after a one-hour charge
- Shaver can be rinsed clean under the tap
- With 2 year guarantee



[asimpleswitch.com](http://asimpleswitch.com)

# Highlights

## V-Track blade system PRO



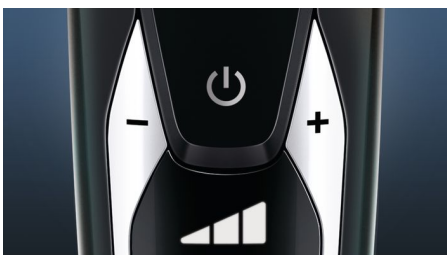
Get the perfect close shave. The V-Track Precision PRO Blades gently position each hair in the best cutting position, from 1 day up to 3 day beard and even the flat laying and different length of hairs. Cuts 30% closer\* in less strokes leaving your skin in great condition.

## 8-direction ContourDetectHeads



Follow every contour of your face and neck with 8-directional ContourDetect heads. You'll catch 20% more hairs with every pass. Resulting in an extremely close, smooth shave.

## Personal comfort settings



Choose between 3 modes to customize your shave: Sensitive – for a gentle, yet thorough shave. Normal – for a thorough, everyday shave. Fast – for a quick shave that saves you time.

## Aquatec Wet & Dry



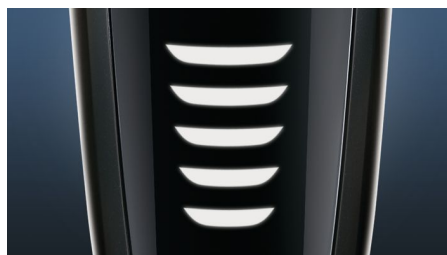
Choose how you prefer to shave. With the Aquatec Wet & Dry seal, you can opt for a quick yet comfortable dry shave. Or you can shave wet – with gel or foam – even under the shower.

## SmartClean System PLUS



At the touch of a button SmartClean PLUS cleans, lubricates, dries and charges your shaver, so it'll perform at its best every day.

## 5 level LED display



You can easily see how much power is left with the 5-level LED display. Your Philips close shaver will not only tell you when it's time to charge, it has indicators for locking, cleaning and replacing the head.

## 50 minutes of cordless shaving



Our advanced charging system gives you two convenient options: charge for one hour and you'll get 50 minutes of running time, or do a quick charge for one full shave. All 9000 Series Shavers contain a powerful energy-efficient, long-lasting lithium-ion battery. They are designed to operate only in cordless mode, to ensure you'll always be safe when shaving with water, even under the shower.

## SmartClick precision trimmer



Click on our skin-friendly Precision Trimmer to finish your look. It's ideal for maintaining your mustache and trimming your sideburns.

## Fully washable shaver

Simply open the shaver head to rinse it thoroughly under the tap.



[asimpleswitch.com](http://asimpleswitch.com)

## Philips Green Logo

Philips Green Products can reduce costs, energy consumption and CO2 emissions. How? They offer a significant environmental improvement in one or more of the Philips Green Focal Areas – Energy efficiency, Packaging, Hazardous substances, Weight, Recycling and disposal and Lifetime reliability.

# Specifications

## Shaving Performance

**Shaving system:** V-Track blade system PRO

**Contour following:** 8-direction

ContourDetectHeads

**SkinComfort:** AquaTec Wet & Dry

**Personal Comfort Settings:** Sensitive-Normal-Fast settings

## Accessories

**SmartClean PLUS:** Cleans, Dries, Charges, Lubricates, Cleaning cartridge (included)

**SmartClick:** Precision trimmer

**Pouch:** Travel pouch

## Ease of use

**Display:** 5 level battery indicator, Battery low indicator, Cleaning indicator, Replace shaving heads indicator, Travel lock indicator

**Cleaning:** Fully washable

## Design

**Color:** Altum

**Handle:** Ergonomic grip & handling

## Power

**Battery Type:** Lithium-ion

**Run time:** 50 min / 17 shaves

**Charging:** 1 hour full charge, Quick charge for 1 shave

**Automatic voltage:** 100-240 V

**Stand-by power:** 0.1 W

**Max power consumption:** 9 W

## Service

**2-year guarantee**

**Replacement head:** Replace every 2 yrs with SH90

## Software

**Software update:** Philips offers relevant software updates for a period of 2 years after the date of purchase

