

PHILIPS

Wet and dry electric shaver

Shaver series 9000

V-Track Precision Blades

8-direction
ContourDetectHeads

SmartClick precision trimmer



S9111/12



Perfection in every pass

Cuts up to 20% more hair* in a single pass

The Shaver 9000 is our most advanced shaver yet. The unique contour detect technology offers exceptional coverage over every contour of your face, and the V-Track system guides hairs into the best cutting position for the closest results.

Designed for perfection

- Blades perfectly guide hairs into position for a close shave
- Heads flex in 8 different directions for a superb result

A comfortable shave

- Get a comfortable dry or refreshing wet shave with Aquatec

Easy to use

- Intuitive icons make the functions easy to use
- 50 minutes cordless shaving after a one-hour charge
- Shaver can be rinsed clean under the tap
- With 2 year guarantee

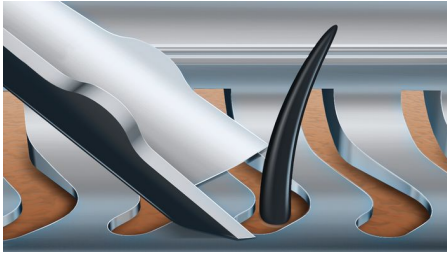
Get the most of your shaver

- Click-on trimmer for perfect mustache and sideburn trimming



Highlights

V-Track precision blade system



Get the perfect close shave. The V-Track Precision Blades gently positions each hair in the best cutting position, even the flat laying and different length of hairs. Cuts 30% closer in less strokes leaving your skin in great condition.

8-direction ContourDetectHeads



Follow every contour of your face and neck with 8-directional ContourDetect heads. You'll catch 20% more hairs with every pass. Resulting in an extremely close, smooth shave.

Aquatec Wet & Dry



Choose how you prefer to shave. With the Aquatec Wet & Dry seal, you can opt for a quick yet comfortable dry shave. Or you can shave wet – with gel or foam – even under the shower.

SmartClick precision trimmer



Click on our skin-friendly Precision Trimmer to finish your look. It's ideal for maintaining your mustache and trimming your sideburns.

3 level LED display



The intuitive display shows relevant information, enabling you to get the best performance out of your shaver: - 3-level battery and travel lock indicators - Cleaning Indicator - Battery Low Indicator - Replacement Head Indicator

50 minutes of cordless shaving



Our advanced charging system gives you two convenient options: charge for one hour and you'll get 50 minutes of running time, or do a quick charge for one full shave. All 9000 Series Shavers contain a powerful energy-efficient, long-lasting lithium-ion battery. They are designed to operate only in cordless mode, to ensure you'll always be safe when shaving with water, even under the shower.

Built to last



We back this Philips shaver with a 2-year guarantee. Our 9000 Series Shavers are designed for performance and durability, promising you an extremely close shave time after time.

Fully washable shaver



Simply open the shaver head to rinse it thoroughly under the tap.



IF DESIGN AWARD 2015

Shaver series 9000Precision, control and maneuverability are the defining features of the 9000 shaver. The V-Track system guides hairs into the best cutting position for the closest result, while fully flexible eight directional heads catch more hairs for a clean shave in fewer strokes. The "AquaTec Wet & Dry" seal of this shaver allows for a comfortable dry shave or a refreshing wet shave, using a shaving gel or foam for extra skin comfort.

Specifications

Shaving Performance

Shaving system: V-Track Precision Blade System, Super Lift & Cut Action

Contour-following: 8-direction ContourDetectHeads

Skin comfort: AquaTec Wet & Dry

Accessories

SmartClick: Precision trimmer

Pouch: Travel pouch

Ease of use

Display: 3 level battery indicator, Cleaning indicator, Battery low indicator, Replace shaving heads indicator, Travel lock indicator

Cleaning: Fully washable

Design

Color: Glacier Blue

Handle: Ergonomic grip & handling

Power

Battery Type: Lithium-ion

Run time: 50 min / 17 shaves

Charging: Quick charge for 1 shave, 1 hour full

charge

Automatic voltage: 100-240 V

Max power consumption: 9 W

Stand-by power: 0.1 W

Service

2-year guarantee

Replacement head: Replace every 2 yrs with SH90

