



Philips Fidelio  
Headphones with mic

### High resolution audio

In-ear  
Ultra-soft silicone caps  
Flat cable



S2WT

## High fidelity, premium quality

Wherever you go

Philips Fidelio S2 headphones are precisely engineered to deliver natural, balanced sound, revealing every details as the artist intended. Amazing sound presented in a lightweight yet durable design for true comfort and pleasure on the go.

#### Designed for precision

- High Resolution audio reproduces music in its purest form
- High-powered 13.5mm neodymium drivers for exceptional sound
- Layered motion control drivers for refined high frequencies
- Engineered metal housing reduces vibration and resonance
- Semi-closed back design for sound balance and bass extension

#### Listen in comfort

- 2 Comply™ Foam Tips for comfy fit and noise isolation
- Ultra-soft silicone tips in 5 sizes for a custom, snug fit
- Copper alloy outer housing for lightweight durability
- Ergonomic earphones fit perfectly while dispersing pressure
- Anti-scratch high gloss coating for added protection

#### Created for convenience

- Switch between music and calls with in-line control and mic
- Protective pouch to store your headphones when not in use



2014



**PHILIPS**  
Fidelio

Headphones with mic  
High resolution audio In-ear, Ultra-soft silicone caps, Flat cable

S2WT/00

## Highlights

### 13.5mm neodymium drivers

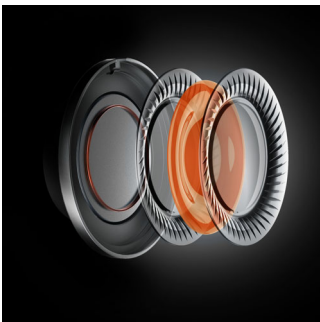


Each speaker driver is carefully hand picked, tuned and tested before being paired to ensure delivery of the most balanced, natural sound. The 13.5mm drivers utilize high power neodymium magnets to deliver deep bass impact, transparent mid-range and refined high frequencies.

### Semi-closed back design

The semi-closed back architecture combined with large, premium-quality drivers, ensure greater bass extension, while the design itself is optimized to minimize sound leakage. Front pressure equalization channels allow for more detailed and balanced sound, which reduces the occlusion effect for a more natural listening experience.

### Layered motion control drivers



Layered Motion Control (LMC) drivers feature a multi-layered polymer diaphragm that encases a layer of damping gel. Unlike traditional single-layer drivers at higher audio frequencies that are rigid and reproduce uncontrolled and unnatural timbre, our LMC driver's multiple layers form a non-rigid boundary to hold a layer of gel in shape. The gel absorbs and dampens any exaggerated

energies, resulting in a smooth and flatter frequency response, and therefore more balanced, natural and refined high frequency range.

### Copper alloy outer housing



Copper alloy outer housing for lightweight durability

### Engineered metal housing



The metal housing is meticulously engineered to reduce resonance and vibration, delivering authentically precise sound marked by incredible sound detail.

### Ergonomic earphones



The Fidelio S2 earphones are ergonomically shaped to fit your ear's natural curve, all the

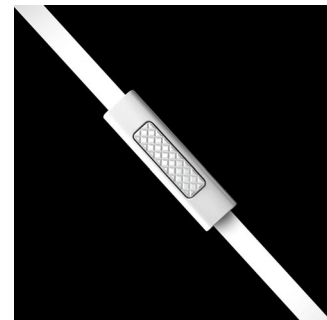
while dispersing pressure. Its lightweight copper alloy construction and superior materials ensure long-lasting comfort, allowing you to experience true comfort as you enjoy your music to the fullest.

### High gloss coating



The ergonomically designed earshell is protected by a high-gloss finish in classic piano-white lacquer finish, which not only imparts a premium look and feel but also durability and resistance to scratches. The protective coating makes the earphones easy to clean and even easier to bring along with you anywhere you go. Just a wipe and they'll look as good as new.

### In-line control and mic



The Fidelio S2 in-ear headphones feature an in-line remote and microphone so you can switch easily between your music and calls. Stay connected with important people – and your music, always.

Headphones with mic  
High resolution audio In-ear, Ultra-soft silicone caps, Flat cable

S2WT/00

# Specifications

## Sound

- Frequency response: 5- 40 000 Hz
- Sensitivity: 107 dB
- Speaker diameter: 13.5 mm
- Maximum power input: 40 mW
- Impedance: 22 ohm
- Acoustic system: Semi-closed

## Design

- Color: White

## Accessories

- Storage pouch

## Connectivity

- Cable Connection: 3.5mm 4 pole (1.2M)
- Compatible with: iPhone®, BlackBerry®, HTC, LG, MOTOROLA, Sony, Nokia\*, SAMSUNG\*.  
\*Extra connector available through customer support for Sony Ericsson, older models from NOKIA and SAMSUNG



Issue date 2016-07-15

Version: 4.2.7

12 NC: 8670 000 97386  
EAN: 69 23410 71929 1

© 2016 Koninklijke Philips N.V.  
All Rights reserved.

Specifications are subject to change without notice.  
Trademarks are the property of Koninklijke Philips N.V.  
or their respective owners.

[www.philips.com](http://www.philips.com)