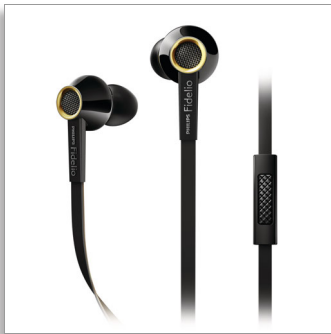




Philips Fidelio
Headphones with mic

High resolution audio

In-ear
Ultra-soft silicone caps
Flat cable



S2BK

High fidelity, premium quality

Wherever you go

Philips Fidelio S2 headphones are precisely engineered to deliver natural, balanced sound, revealing every details as the artist intended. Amazing sound presented in a lightweight yet durable design for true comfort and pleasure on the go.

Designed for precision

- High Resolution audio reproduces music in its purest form
- High-powered 13.5mm neodymium drivers for exceptional sound
- Layered motion control drivers for refined high frequencies
- Engineered metal housing reduces vibration and resonance
- Semi-closed back design for sound balance and bass extension

Listen in comfort

- Ultra-soft silicone tips in 5 sizes for a custom, snug fit
- Copper alloy outer housing for lightweight durability
- Anti-scratch high gloss coating for added protection
- 2 Comply™ Foam Tips for comfy fit and noise isolation
- Ergonomic earphones fit perfectly while dispersing pressure

Created for convenience

- Switch between music and calls with in-line control and mic
- Protective pouch to store your headphones when not in use



2014



PHILIPS
Fidelio

Headphones with mic
High resolution audio In-ear, Ultra-soft silicone caps, Flat cable

S2BK/00

Highlights

High resolution audio



High Resolution Audio offers the best in audio performance, reproducing original studio master recordings more faithfully than 16bit/44.1kHz CD formats. This uncompromising quality makes High Resolution Audio the best sound companion for the music lover. Fidelio headphones meet the stringent standards required for the Hi-Res Audio stamp of quality. Whether enjoying your Hi-Res collection or a more traditional music source, the smooth extended high frequencies of the Fidelio headphone range help you get more from your music.

13.5mm neodymium drivers

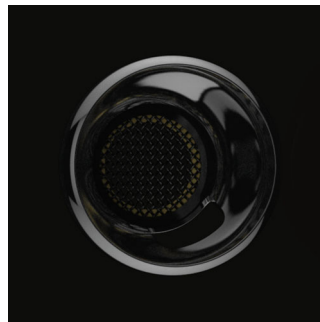


Each speaker driver is carefully hand picked, tuned and tested before being paired to ensure delivery of the most balanced, natural sound. The 13.5mm drivers utilize high power neodymium magnets to deliver deep bass impact, transparent mid-range and refined high frequencies.

Semi-closed back design

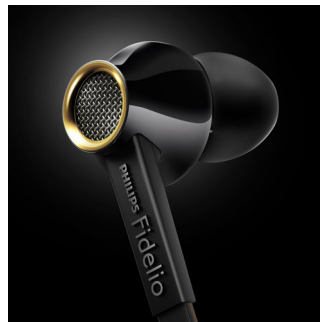
The semi-closed back architecture combined with large, premium-quality drivers, ensure greater bass extension, while the design itself is optimized to minimize sound leakage. Front pressure equalization channels allow for more detailed and balanced sound, which reduces the occlusion effect for a more natural listening experience.

Copper alloy outer housing



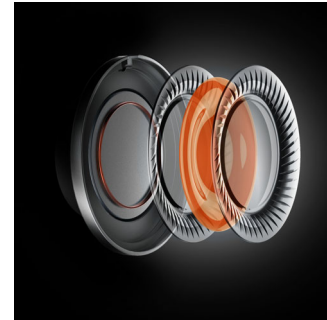
Copper alloy outer housing for lightweight durability

High gloss coating



The ergonomically designed earshell is protected by a high-gloss finish in classic piano-black lacquer finish, which not only imparts a premium look and feel but also durability and resistance to scratches. The protective coating makes the earphones easy to clean and even easier to bring along with you anywhere you go. Just a wipe and they'll look as good as new.

Layered motion control drivers



Layered Motion Control (LMC) drivers feature a multi-layered polymer diaphragm that encases a layer of damping gel. Unlike traditional single-layer drivers at higher audio frequencies that are rigid and reproduce uncontrolled and unnatural timbre, our LMC driver's multiple layers form a non-rigid boundary to hold a layer of gel in shape. The gel absorbs and dampens any exaggerated energies, resulting in a smooth and flatter frequency response, and therefore more balanced, natural and refined high frequency range.

In-line control and mic



The Fidelio S2 in-ear headphones feature an in-line remote and microphone so you can switch easily between your music and calls. Stay connected with important people – and your music, always.

Specifications

Sound

- Frequency response: 5- 40 000 Hz
- Sensitivity: 107 dB
- Speaker diameter: 13.5 mm
- Maximum power input: 40 mW
- Impedance: 22 ohm
- Acoustic system: Semi-closed

Design

- Color: Black

Accessories

- Storage pouch

Connectivity

- Cable Connection: 3.5mm 4 pole (1.2M)
- Compatible with: iPhone®, BlackBerry®, HTC, LG, MOTOROLA, Sony, Nokia*, SAMSUNG*.
*Extra connector available through customer support for Sony Ericsson, older models from NOKIA and SAMSUNG



Issue date 2017-03-16

Version: 5.2.7

12 NC: 8670 000 97384
EAN: 69 23410 71930 7

© 2017 Koninklijke Philips N.V.
All Rights reserved.

Specifications are subject to change without notice.
Trademarks are the property of Koninklijke Philips N.V.
or their respective owners.

www.philips.com