

PHILIPS

Shaving unit

Discontinued

Buy SH70 instead



RQ12/70



Reset your shaver to new

Change heads every 2 years for best results

Within two years your shaver heads cut 9 million hairs on your face. Replace the shaver heads and get back to 100% performance.

Compatibility

- Replacement shaving unit for SensoTouch 3D shavers

Perfection in every pass

- Our best shaving system on 1-3 day beard
- Heads flex in 8 different directions for a superb result

Easy to use

- Easy to replace shaving heads
- Reset your shaver after replacing shaving heads
- Reset your shaver to new

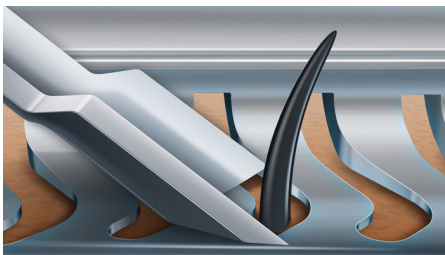
Highlights

Compatible with SensoTouch 3D



RQ12 shaving unit is compatible with SensoTouch 3D (RQ12xx) and Arcitec (RQ10xx) shavers.

V-Track blade system PRO



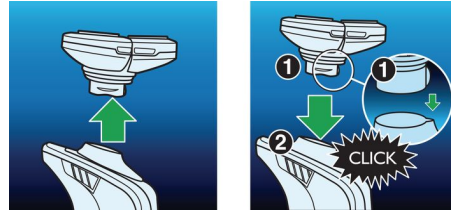
Get the perfect close shave. The V-Track Precision PRO Blades gently positions each hair in the best cutting position, from 1 day up to 3 day beard and even the flat laying and different length of hairs. Cuts 30% closer* in less strokes leaving your skin in great condition.

8-direction ContourDetectHeads



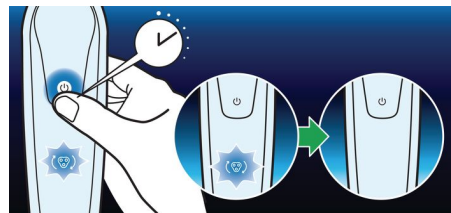
Follow every contour of your face and neck with 8-directional ContourDetect heads. You'll catch 20% more hairs with every pass. Resulting in an extremely close, smooth shave.

Simple replacement



Easily renew your shaving unit using our click off, click on system.

How to reset your shaver



The latest Philips shavers have an inbuilt replacement reminder which will indicate you when to replace shaving heads. After replacing shaving heads, you can reset replacement trigger by pressing the on/off button for more than 5 seconds. Otherwise, replacement trigger will turn off automatically after 9 successive shaves.

Reset your shaver to new



To get back to 100% performance, replace your shaving heads every 2 years.

Specifications

Shaving heads

Fits product type: SensoTouch 3D (RQ12xx), Arcitec (RQ10xx)

Important: If SH70 is also out of stock, unfortunately, there is no replacement available. SH71 is not compatible with SensoTouch or Arcitec shavers.

Upgraded shaving heads: RQ12 has been replaced by SH70

