



Shaving heads

- V-Track Precision blades
- 8-direction ContourDetect Heads

RQ12/60

Reset your shaver to new

Change heads every 2 years for the best results

Within two years your shaver heads cut 9 million hairs on your face. Replace the shaver heads and get back to 100% performance.

Benefits

Single pass, precise shave

- Perfectly guides hairs for a close shave with V-Track blades
- Heads flex in 8 different directions for a superb result
- Lifts hairs to cut comfortably close

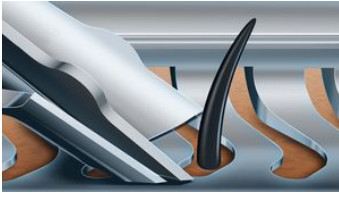
Easy to use

- Easy to replace shaving heads
- Reset your shaver after replacing shaving heads
- Replacement shaving head for SensoTouch 3D and arcitec shavers
- Reset your shaver to new

PHILIPS

Features

V-Track Precision Blades



The patented V-Track Precision Blades gently position each hair at the best cutting angle — even hairs that are flat or different lengths. This allows you to cut 30% closer in fewer strokes, leaving your skin in great condition.

8-direction ContourDetect Heads



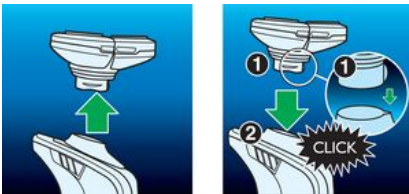
Follow every contour of your face and neck with 8-directional ContourDetect heads. You'll catch 20% more hairs with every pass, resulting in an extremely close, smooth shave.

Super Lift & Cut Action



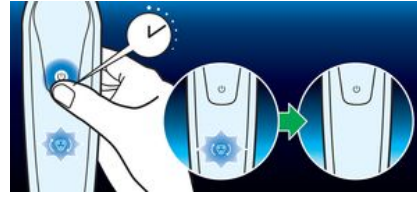
Shave closer with the dual-blade Super Lift and Cut action. The first blade raises each hair while the second blade comfortably cuts below skin level, for really smooth results.

Simple replacement



Easily renew your shaving unit using our click off, click on system.

How to reset your shaver



The latest Philips shavers have an inbuilt replacement reminder, which will tell you when to replace the shaving heads. After replacing the shaving heads, you can reset the replacement trigger by pressing the on/off button for more than 5 seconds. Otherwise, the replacement trigger will be turned off automatically after 9 successive shaves.

Compatibility



RQ12+ replacement head is compatible with all SensoTouch 3D (RQ12xx) and arcitec (RQ10xx) shavers.

Reset your shaver to new



To get back to 100% performance, replace your shaving heads every 2 years.

Specifications

Please note that this is a pre-sales leaflet. The contents of this leaflet reflect the best of our knowledge per date and country mentioned above. The contents of this leaflet are subject to change without notice. Philips does not accept any liability as to the contents of this leaflet.

Shaving heads

Fits product type	arcitec (RQ10xx) SensoTouch 3D (RQ12xx)
-------------------	--

Accessories

Included in pack	Retaining ring holder Protective cap
------------------	---

Packaging dimensions

Height	11.40 cm
Width	9.90 cm
Depth	3.80 cm
Net weight	0.04 kg

Gross weight	0.07 kg
EAN	08710103702092
Number of products included	1
Country of origin	NL
Harmonised Systems Code	851090

Outer Carton

Length	12.40 cm
Width	10.40 cm
Height	12.40 cm
Gross weight	0.26 kg
EAN	18710103702099

Shaver series 9000

Number of consumer packages 3



data subject to change
2017, February 16

Version: 4.1.1
EAN: 08710103702092

© 2017 Koninklijke Philips N.V.
All rights reserved.

Specifications are subject to change without notice. Trademarks are the property of Koninklijke Philips N.V. or their respective owners.

www.philips.com