

PHILIPS

NORELCO

2D Shaving unit

Shaver series 6000
SensoTouch

DualPrecision blades

Replacement unit

Fits S6000 (11_...)



RQ11/52



Keep a close shave

Change heads every 12 months for best results

Within one year your shaver heads cut 4.5 million hairs on your face. Replace the shaver every year for best results.

Compatibility

- Replacement heads for SensoTouch shavers

Sensationally smooth shave

- Shavers with Super Lift&Cut Action

Follows the unique contours of your face

- GyroFlex 2D system adjusts easily to the curve

An electric shaver which takes care of your skin

- Aquatec seal for comfortable dry & refreshing wet shaves
- Smooth, low-friction SkinGlide to minimize irritation

Simple replacement

- Easy click off, click on



asimpleswitch.com

Highlights

Compatible with SensoTouch



RQ11 replacement heads is compatible with SensoTouch (11__X) shavers.

Super Lift & Cut Action



The dual blade system built into the Philips electric shaver lifts hairs to cut comfortably below skin level for a closer shave.

GyroFlex 2D



GyroFlex 2D contour-following system of the shaver adjusts easily to the curves of your face, minimizing pressure and irritation for a close shave.

Aquatec



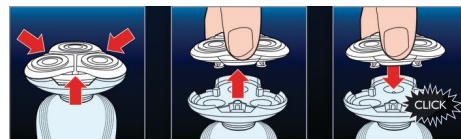
The Aquatec wet & dry seal of the electric shaver lets you choose how you prefer to shave. You can get a comfortable dry shave or a refreshing wet shave using a shaving gel or foam for extra skin comfort.

SkinGlide



The low-friction SkinGlide shaving surface of the electric shaver slides smoothly along your skin for a close easy shave.

Easy click off, click on



Simply pop the head of your Philips shaver open and use the included cleaning brush to sweep away the loose hairs.

Specifications

Shaving heads

Fits product type: Shaver series 6000 (11__X)
Shaving units per packaging: 1



asimpleswitch.com

Philips Green Logo

Philips Green Products can reduce costs, energy consumption and CO2 emissions. How? They offer a significant environmental improvement in one or more of the Philips Green Focal Areas – Energy efficiency, Packaging, Hazardous substances, Weight, Recycling and disposal and Lifetime reliability.