

PHILIPS

Grooming kit

Multigroom

35 min grooming

Beard, nose, ears use



QG3030/10



Create your own look

4 in 1 grooming kit

Philips 4 in 1 grooming kit with new improved performance and skin friendly trimmer for nose-ear-eyebrow and beard. Designed to create any style you want with excellent precision, giving you that sense of pride of a perfect end result.

Best performance that feels great

- Sharper edges for improved cutting performance
- Rounded Guard is more gentle and glides better on the skin
- Rechargeable cordless

Brings maximum ease of use

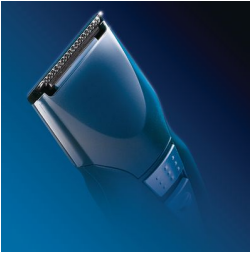
- Washable attachments

Create the look you want

- Full size trimmer for beard and head hair
- Nose, ear and eyebrow trimmer
- Beard and moustache comb locks into 9 settings

Highlights

Full size trimmer



Using the full size trimmer without a comb results in a stubble beard look.

Washable attachments



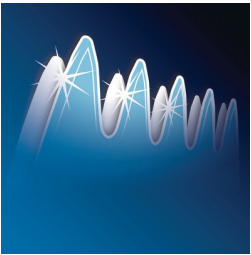
Washable attachments for fast and convenient cleaning.

9 position beard and moustache comb



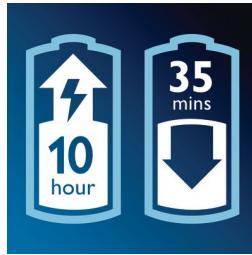
9 length settings to trim your facial hair exactly how you want with this Philips trimmer.

New sharper edges



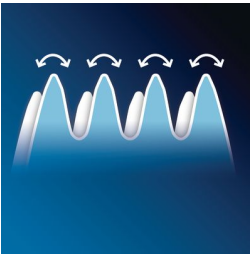
Sharper edges provides an improved cutting performance for faster and better results

Charging and usage time



10-hour charge for up to 35 minutes of cordless operation

Rounded guard



Rounded trimmer tip's prevents scratching on the skin and provide the ultimate body comfort

Nose, ear and eyebrow trimmer



To trim unwanted hairs easily and pain-free.



Specifications

Ease of use

Wet & Dry: Washable attachments

Power system

Battery type: NiMH

Charging time: 10 hours

Running time: 35 minutes

Usage: Cordless only

Worldwide voltage: 100-240 V

Accessories

Charging stand

Storage pouch

Create the look you want

Styling tools: Beard and moustache comb

Number of length settings: 9 secured length settings

Attachments

Full size trimmer blade

Nose, ear and eyebrow trimmer

Maintenance

Guarantee: 2-year worldwide guarantee

Lubrication: Blades need no oiling

