

# Always there to help you

Register your product and get support at  
[www.philips.com/support](http://www.philips.com/support)



PX5112T



## User manual

# PHILIPS



# Contents

<b>1</b>	<b>Safety</b>	<b>2</b>	
<b>2</b>	<b>Your CD Soundmachine</b>	<b>3</b>	
	Introduction	3	
	What's in the box	3	
	Overview of the main unit	4	
<b>3</b>	<b>Get started</b>	<b>6</b>	
	Connect power	6	
	Turn on	7	
	Turn off	7	
	What's in the box	7	
<b>4</b>	<b>Play</b>	<b>8</b>	
	Play CD	8	
	Play from USB devices	8	
	Play from Bluetooth-enabled devices	8	
	Play from an external device	9	
<b>5</b>	<b>Play options</b>	<b>10</b>	
	Control play	10	
	Program tracks	10	
	Adjust sound	10	
<b>6</b>	<b>Listen to FM/AM radio</b>	<b>11</b>	
	Tune to FM/AM radio stations	11	
	Store radio stations automatically	11	
	Store radio stations manually	11	
	Select a preset radio station	11	
<b>7</b>	<b>Product information</b>	<b>12</b>	
	Specifications	12	
	Supported MP3 disc formats	13	
	USB playability information	13	
	Maintenance	13	
<b>8</b>	<b>Troubleshooting</b>	<b>14</b>	
	About Bluetooth device	14	
<b>9</b>	<b>Notice</b>	<b>15</b>	

# 1 Safety



## Warning

- Never remove the casing of this apparatus.
- Never place this apparatus on other electrical equipment.
- Never look into the laser beam inside this apparatus.



## Caution

- Use of controls or adjustments or performance of procedures other than herein may result in hazardous laser exposure or other unsafe operation.



## Warning

- Never remove the casing of this apparatus.
- Never lubricate any part of this apparatus.
- Never look into the laser beam inside this apparatus.
- Never place this apparatus on other electrical equipment.
- Keep this apparatus away from direct sunlight, naked flames or heat.
- Ensure that you always have easy access to the power cord, plug or adaptor to disconnect the apparatus from the power.

- The device shall not be exposed to dripping or splashing.
- Do not place any source of danger on the device (e.g. liquid filled objects, lit candles).
- Where the MAINS plug or an appliance coupler is used as the disconnect device, the disconnect device shall remain readily operable.
- Make sure that there is enough free space around the product for ventilation.
- Battery usage CAUTION – To prevent battery leakage which may result in bodily injury, property damage, or damage to the unit:
  - Install all batteries correctly, + and - as marked on the unit.
  - Batteries (packed or installed) shall not be exposed to excessive heat such as sunshine, fire or the like.
  - Remove batteries when the unit is not used for a long time.
- Only use attachments/accessories specified by the manufacturer.

## 2 Your CD Soundmachine

---

### Introduction

With this CD Soundmachine, you can:

- listen to FM radio;
- enjoy audio from discs, tapes, USB storage device, Bluetooth enabled devices, and other external audio devices; and
- program the play sequence of tracks.

The CD sound machine offers you Dynamic Bass Boost (DBB) to enrich sound.

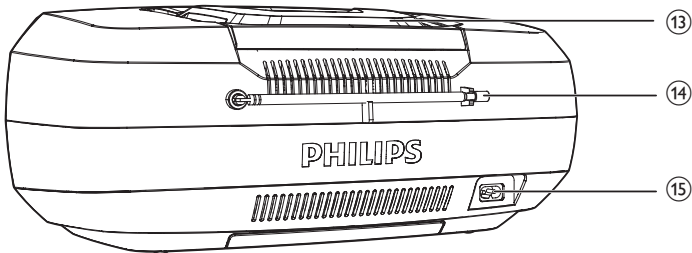
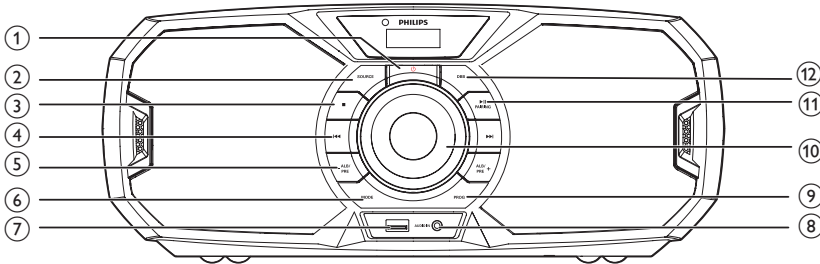
---

### What's in the box

Check and identify the contents of the package:

- Main unit
- AC power cord
- Short User Manual
- The "Round to flat pin" adaptor

## Overview of the main unit



- ①
  - Turn the CD sound machine on or off.
- ② **SOURCE**
  - Select a source.
  - Turn the CD sound machine on or off.
- ③
  - Stop play.
  - Erase a program.
- ④
  - Skip to the previous or next track.
  - Search within a track.
  - Press and hold to fast-forward or fast-backward.
- ⑤ **-ALB/PRE/ALB/PRE+**
  - Skip to the previous/next album.
  - Select a preset radio station.
- ⑥ **MODE**
  - Select repeat or shuffle mode.
- ⑦
  - Connect USB storage devices.
- ⑧ **AUDIO-IN**
  - Connect an external audio device.
- ⑨ **PROG**
  - Program tracks.
  - Program radio stations.
  - Search for radio stations automatically.
- ⑩ **-VOL+ knob**
  - Adjust volume.
- ⑪ **/PAIRING**
  - Start or pause play.
  - In Bluetooth mode, press and hold to enter pairing mode.
- ⑫ **DBB**
  - Turn on or off dynamic bass enhancement.
- ⑬ **Disc compartment**

- ⑭ FM antenna
- ⑮ AC MAINS ~ socket

# 3 Get started

## ! Caution

- Use of controls or adjustments or performance of procedures other than herein may result in hazardous laser exposure or other unsafe operation.

Always follow the instructions in this chapter in sequence.

If you contact Philips, you will be asked for the model and serial number of your apparatus. The model number and serial number are on the bottom of your apparatus. Write the numbers here:

Model No. \_\_\_\_\_

Serial No. \_\_\_\_\_

## Connect power

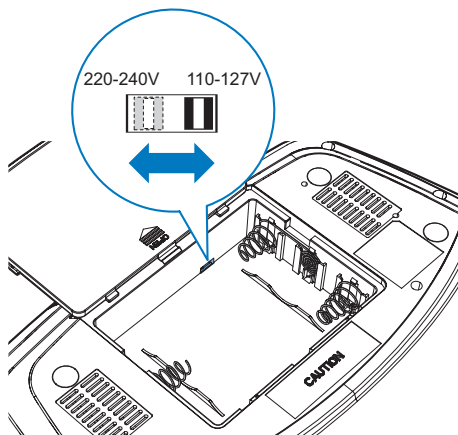
The unit can be powered by either AC power or batteries.

### Option 1: AC power

## ! Warning

- Risk of product damage! Make sure that the power supply voltage corresponds to the voltage printed on the back or the underside of the unit.
- Risk of electric shock! When you disconnect the AC power, always pull the plug from the socket. Never pull the cord.

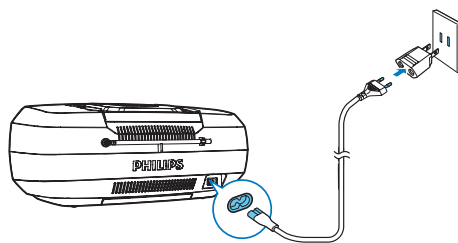
- 1 Switch the voltage selector in the battery compartment according to your local power supply.



- 2 Connect the AC power cord to:
  - the **AC~ MAINS** socket on the CD sound machine.
  - the wall socket.

## \* Tip

- To save energy, turn the CD sound machine off after use.



### Option 2: Battery power

## ! Caution

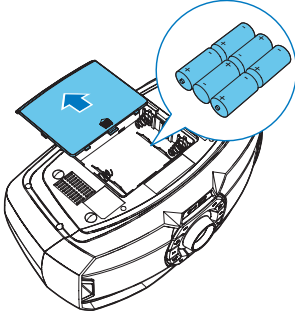
- Batteries contain chemical substances, so they should be disposed of properly.

## ≡ Note

- Batteries are not supplied with the accessories.

- 1 Open the battery compartment.
- 2 Insert 6 batteries (type: R-20, UM-1 or D-cells) with correct polarity (+/-) as indicated.
- 3 Close the battery compartment.

6X1.5V R14/UM2/C CELL



---

## Turn on

Press **⏻**.

- ↳ The CD sound machine switches to the last selected source.



### Tip

- To select a source, press **SOURCE** repeatedly.

---

## Turn off

Press **⏻** again.

- ↳ The CD sound machine turns off.

---

## What's in the box

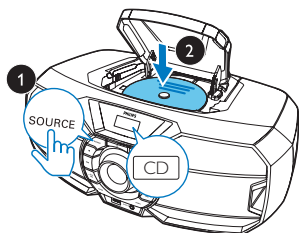
Check and identify the contents of the package:

- Main unit
- AC power cord
- Short User Manual
- The "Round to flat pin" adaptor

## 4 Play

### Play CD

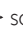
- 1 Press **SOURCE** repeatedly to select the disc source.
- 2 Open the CD compartment.
- 3 Insert a disc with the printed side facing up, then close the disc tray.  
↳ Play starts automatically.

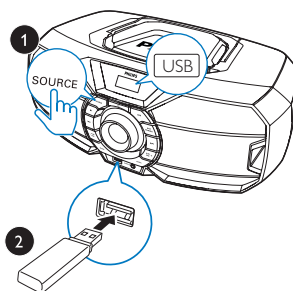


### Play from USB devices

#### Note

- Make sure that the USB device contains playable audio content.

- 1 Press **SOURCE** repeatedly to select the USB source.
- 2 Insert the USB device into the  socket.  
↳ Play starts automatically. If not, press **▶II**.



### Play from Bluetooth-enabled devices

With this product, you can listen to audio from Bluetooth-enabled devices.

#### Connect a device

#### Note

- The operational range between this product and a Bluetooth device is approximately 10 meters (30 feet).

- 1 Press **SOURCE** repeatedly to select **BT** source.  
↳ The bluetooth indicator flashes blue.  
↳ **[BT]** is displayed.
- 2 On your Bluetooth device, enable Bluetooth and search for Bluetooth devices (refer to the user manual of the device).
- 3 Select **[Philips PX5112T]** on your device for pairing. If necessary, enter default password "0000".  
↳ After successful pairing and connection, the product beeps twice, and the LED indicator turns solid blue.
  - If you fail to search for "Philips PX5112T" or cannot pair with this product, press and hold **▶II / PAIRING** for three seconds until the Bluetooth indicator flashes blue quickly to enter pairing mode.

## Note

- [No BT] is displayed when no device is connected with the CD sound machine.

## Play from Bluetooth device

After successful Bluetooth connection, play audio on the Bluetooth device.

- ➔ Audio streams from your Bluetooth device to the product.

## Disconnect the Bluetooth-enabled device

- Press and hold **PAIRING** for 2 seconds;
- Disable Bluetooth on your device; or
- Move the device beyond the communication range.

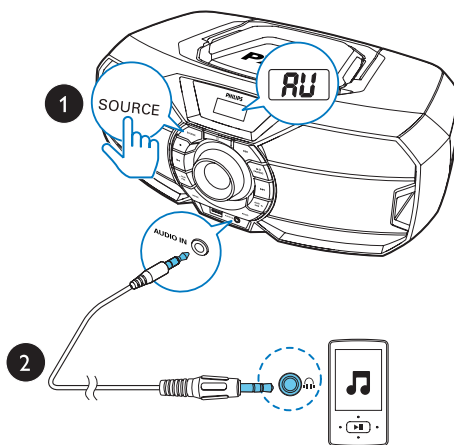
## Connect another Bluetooth-enabled device

Disable Bluetooth on the current device, and then connect another device.

## Play from an external device

You can also listen to an external audio device such as an MP3 player through the CD sound machine.

- 1 Press **SOURCE** repeatedly to select **AUX** source.
- 2 Connect an audio cable (3.5mm, not supplied) to:
  - the **AUDIO-IN** socket on the CD sound machine.
  - the headphone socket on an external device.
- 3 Play the external device (see the device's user manual).




# 5 Play options

## Control play

In CD/USB mode, you can control play through the following operations.

⏮/⏭	Press and hold to fast-forward or fast-reverse the track during playback, then release to resume play.
-PRE/ ALB+	Skip to the previous or next MP3 album.
▶	Start or pause play.
■	Stop play.
MODE	<b>[REP]</b> : Play the current track repeatedly. <b>[REP ALL]</b> : Play all tracks repeatedly. <b>[REP ALB]</b> : Play all tracks in the current album repeatedly(for MP3 files). <b>[SHUF]</b> : Play tracks randomly. To return to normal play, press repeatedly until the repeat icons disappear.

 Tip

- Only**[REP]** and **[REP ALL]** be selected when you play the programmed tracks.

## Program tracks

In CD or USB mode, you can program a maximum of 20 tracks.

- 1 Press ■ to stop playback.
- 2 Press **PROG** to activate the program mode.

- 3 For MP3 tracks, press **-ALB/PRE/ALB/PRE+** to select an album.
- 4 Press ⏮/⏭ to select a track number; then press **PROG** to confirm.
- 5 Repeat steps 3-4 to program more tracks.
- 6 Press ▶|| to play the programmed tracks.
  - To erase the program, press ■ twice.

## Adjust sound

During play, you can adjust volume and select the sound effects.

Key	Function
-VOL+ knob	Increase or decrease volume.
DBB	Turn dynamic bass enhancement on or off.

## 6 Listen to FM/AM radio

### Tune to FM/AM radio stations

#### Note

- for optimal reception, fully extend and adjust the position of the FM antenna.

- 1 Press **SOURCE** repeatedly to select FM/AM radio.
- 2 Press and hold ◀◀ / ▶▶ for 2 seconds.
  - ↳ The unit tunes to a station with strong reception automatically.

- 3 Repeat step 2 to tune to more stations.

**To tune to a radio station with weak signal:**

Press ◀◀ / ▶▶ repeatedly until you find better reception.

### Store radio stations automatically

#### Note

- You can program a maximum of 20 FM/AM radio stations.

In tuner mode, press and hold **PROG** for 2 seconds.

- ↳ **[AUTO]** (auto) is displayed.
- ↳ The CD sound machine stores all the available FM/AM radio stations.
- ↳ The first stored radio station is broadcast automatically.

### Store radio stations manually

#### Note

- You can program a maximum of 20 FM radio stations.

- 1 Tune to an FM/AM radio station.
- 2 Press **PROG** to activate the storing mode.
- 3 Press **-ALB/PRE/ALB/PRE+** to allocate a number (1 to 20) to this radio station, then press **PROG** to confirm.
  - ↳ The preset number and the frequency of the preset station are displayed.
- 4 Repeat the above steps to store other stations.

#### Note

- To remove a pre-stored FM/AM radio station, store another station in its place.

### Select a preset radio station

In FM/AM tuner mode, press **-ALB/PRE/ALB/PRE+** to select a preset number.

# 7 Product information

## Note

- Product information is subject to change without prior notice.

## Specifications

### Amplifier

Max Output Power	2x 7.5 W RMS
Frequency Response	63 -20000 Hz, +/-3dB
Signal to Noise Ratio	>67 dB
Total Harmonic Distortion	<1 %
Audio-in Input	600 mV RMS 20kohm

### Disc

Laser Type	Semiconductor
Disc Diameter	12cm/8cm
Support Disc	CD-DA, CD-R, CD-RW, MP3-CD
Total Harmonic Distortion	<1%
Frequency Response	63 -20KHz
S/N Ratio	>72 dBA

### Bluetooth

Bluetooth Version	V4.1+EDR
Supported Profiles	A2DP, AVRCP
Range	10 m (Free space)
Bluetooth Frequency Band	2.4GHz ~ 2.48GHz ISM Band

### Tuner(FM)

Tuning Range	87.5 - 108MHz
Tuning grid	100 kHz
Preset stations	20
-Mono, 26dB S/N Ratio	<22dBf
Search Selectivity	<35dBf
Total Harmonic Distortion	<3%
Signal to Noise Ratio	>50 dB

### Tuner(AM)

Tuning Range	AM:530 - 1700KHz
Tuning grid	10 kHz
Preset stations	20
Mono, 26dB S/N Ratio,	<75dBuV
Total Harmonic Distortion	<5%
Signal to Noise Ratio	>50 dB

### General

Power supply	110-127V~/220-
- AC Power	240V~, 50/60 Hz;
- Battery	9 V, 6 x 1.5 V, R-20/ UM-1/D-cells
Operation Power Consumption	25 W
Standby Power Consumption	<3 W
Dimensions - Main Unit (W x H x D)	390 x 162 x 258 mm
Weight (Main Unit)	2.86 kg

---

## Supported MP3 disc formats

- ISO9660, Joliet
- Maximum title number: 512 (depending on file name length)
- Maximum album number: 255
- Supported sampling frequencies: 32 kHz, 44.1kHz, 48 kHz
- Supported Bit-rates: 32~256 (kbps), variable bit rates

---

## USB playability information

### Compatible USB devices:

- USB flash memory (USB 2.0 or USB1.1)
- USB flash players (USB 2.0 or USB1.1)
- memory cards (requires an additional card reader to work with this apparatus)

### Supported formats:

- USB or memory file format FAT12, FAT16, FAT32 (sector size: 512 bytes)
- MP3 bit rate (data rate): 32-320 Kbps and variable bit rate
- Directory nesting up to a maximum of 8 levels
- Number of albums/ folders: maximum 99
- Number of tracks/titles: maximum 999
- File name in Unicode UTF8 (maximum length: 128 bytes)

### Unsupported formats:

- Empty albums: an empty album is an album that does not contain MP3/ WMA files, and is not be shown in the display.
- Unsupported file formats are skipped. For example, Word documents (.doc) or MP3 files with extension .dlf are ignored and not played.
- AAC, WAV, PCM audio files
- DRM protected WMA files (.wav, .m4a, .m4p, .mp4, .aac)
- WMA files in Lossless format

---

## Maintenance

### Clean the cabinet

- Use a soft cloth slightly moistened with a mild detergent solution. Do not use a solution containing alcohol, spirits, ammonia or abrasives.

### Clean discs

- When a disc becomes dirty, clean it with a cleaning cloth. Wipe the disc from the centre out.



- Do not use solvents such as benzene, thinner, commercially available cleaners, or antistatic spray intended for analogue records.

### Clean the disc lens

- After prolonged use, dirt or dust may accumulate at the disc lens. To ensure good play quality, clean the disc lens with Philips CD lens cleaner or any commercially available cleaner. Follow the instructions supplied with cleaner.

# 8 Troubleshooting



## Warning

- Never remove the casing of this device.

To keep the warranty valid, never try to repair the system yourself.

If you encounter problems when using this device, check the following points before requesting service. If the problem remains unsolved, go to the Philips Web page ([www.philips.com/support](http://www.philips.com/support)). When you contact Philips, make sure that the device is nearby and the model number and serial number are available.

**No power**

- Ensure that the Mains cord is connected securely.
- Ensure that there is power at the AC Mains.
- Ensure that the batteries are inserted correctly.

**No sound or poor sound**

- Adjust the volume.

**No response from the unit**

- Disconnect and reconnect the AC power plug, then turn on the system again.
- As a power-saving feature, the unit switches off automatically 15 minutes after track play reaches the end and no control is operated.

**Poor cassette sound quality**

- Make sure that heads in the cassette holder are clean.

**Remote control does not work**

- Before you press any function button, first select the correct source with the remote control instead of the main unit.
- Reduce the distance between the remote control and the unit.
- Insert the battery with its polarities (+/- signs) aligned as indicated.
- Replace the battery.
- Aim the remote control directly at the sensor on the front of the unit.

**USB device not supported**

- The USB device is incompatible with the apparatus. Try another one.

**No disc detected**

- Insert a disc.
- Check if the disc is inserted upside down.
- Wait until the moisture condensation at the lens has cleared.
- Replace or clean the disc.
- Use a finalized CD or correct format disc.

**Poor radio reception**

- Increase the distance between the unit and your TV or other radiation sources.
- Fully extend the antenna.

---

## About Bluetooth device

**The audio quality is poor after connection with a Bluetooth-enabled device.**

- The Bluetooth reception is poor. Move the device closer to this product or remove any obstacle between them.

**Cannot connect with the device.**

- The Bluetooth function of the device is not enabled. Refer to the user manual of the device for how to enable the function.
- This product is already connected with another Bluetooth-enabled device. Disconnect that device and then try again.

**The paired device connects and disconnects constantly.**

- The Bluetooth reception is poor. Move the device closer to this product or remove any obstacle between them.
- For some devices, Bluetooth connection may be deactivated automatically as a power-saving feature. This does not indicate any malfunction of this product.

## 9 Notice

Any changes or modifications made to this device that are not expressly approved by Gibson Innovations may void the user's authority to operate the equipment.

### Disposal of your old product



Your product is designed and manufactured with high quality materials and components, which can be recycled and reused. Do not throw away the product with the normal household waste at the end of its life, but hand it in at an official collection point or recycling. By doing this, you help to preserve the environment.

### Environmental information

All unnecessary packaging has been omitted. We have tried to make the packaging easy to separate into three materials: cardboard (box), paper pulp (buffer) and polyethylene (bags, protective foam sheet.)

Your system consists of materials which can be recycled and reused if disassembled by a specialized company. Please observe the local regulations regarding the disposal of packaging materials, exhausted batteries and old equipment.

**This apparatus includes these labels:**



Class II equipment symbol



This symbol indicates that the apparatus has a double insulation system.



**Be responsible  
Respect copyrights**

The making of unauthorized copies of copy-protected material, including computer programs, files, broadcasts and sound recordings, may be an infringement of copyrights and constitute a criminal offence. This equipment should not be used for such purposes.



The USB-IF Logos are trademarks of Universal Serial Bus Implementers Forum, Inc.



The Bluetooth® word mark and logos are registered trademarks owned by Bluetooth SIG, Inc. and any use of such marks by Gibson Innovations Limited is under license. Other trademarks and trade names are those of their respective owners.



### Note

- The type plate is located on the bottom of the apparatus.



2015 © Gibson Innovations Limited. All rights reserved.

This product has been manufactured by, and is sold under the responsibility of Gibson Innovations Ltd., and Gibson Innovations Ltd. is the warrantor in relation to this product.

Philips and the Philips Shield Emblem are registered trademarks of Koninklijke Philips N.V. and are used under license from Koninklijke Philips N.V.

PX5112T\_55\_UM\_V1.0

