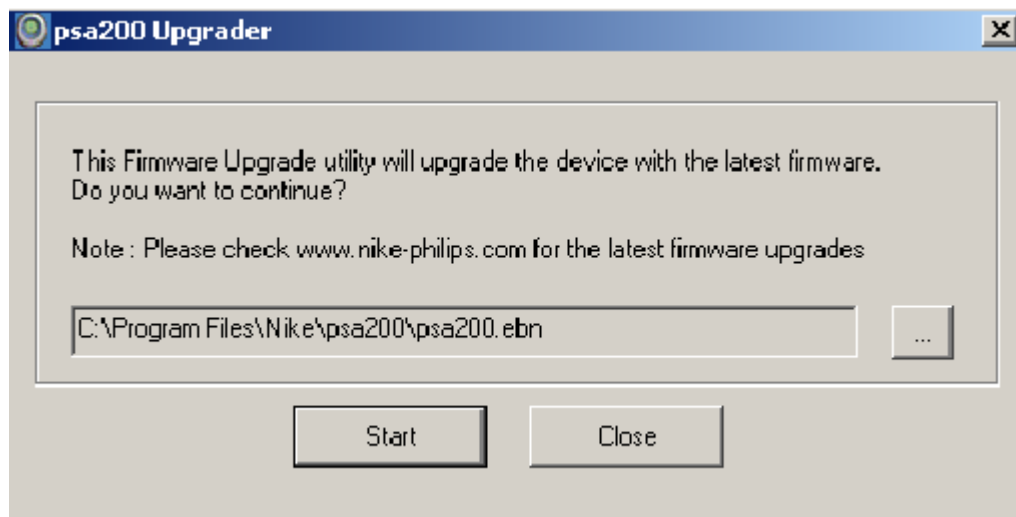
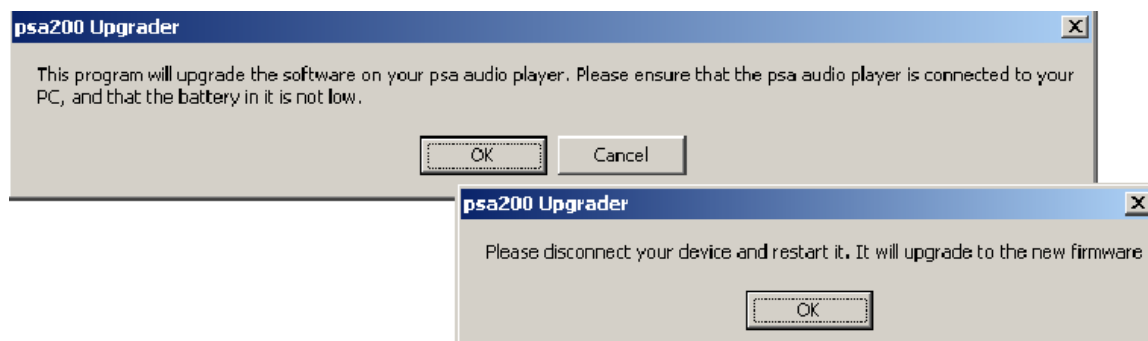


PSA200 Firmware upgrade procedure

1. Download the zip file from the site. Then unzip the file into a temp folder on your computer.
2. At Start->Programs->Nike->psa200, select and launch “Upgrader”.
3. When the user starts the Upgrader with no device connected, the following screen is seen with the *Start* button disabled.
 - The *Start* button is enabled only when the correct device is connected



- Click on the “...” button to browse and select the unzipped firmware file to be loaded into the device and then click open
- Place a fresh battery to the set and connected to the PC
- The user is informed that the device will be upgraded with the new firmware. On pressing OK, the firmware is loaded.



- Disconnect the device so that the device upgrades to the new firmware

- Press the play key and the LCD display shows :” FUpgrade”
- Wait until the set switch off automatically.
- The set is then upgraded.