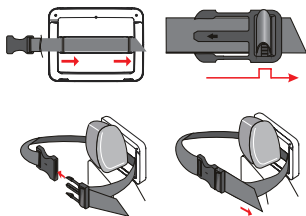


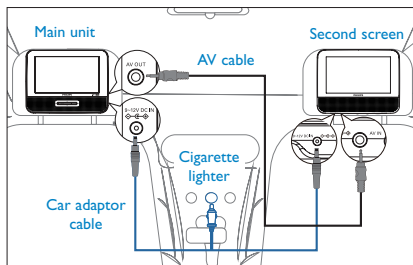
# Quick start guide

## 1 Prepare (for in-car use)

- 1 Attach the main unit and the second screen to the back of the front seat headrests.



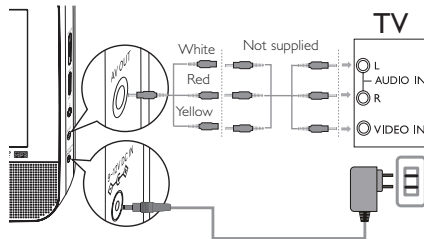
- 2 Connect the supplied AV cable to the **AV OUT** jack on the main unit and the **AV IN** jack on the second screen.
- 3 Connect the supplied car adaptor cable to the **DC IN** jacks on the main unit and the second screen, and to the car cigarette lighter socket.



## 1 Prepare (for domestic use)

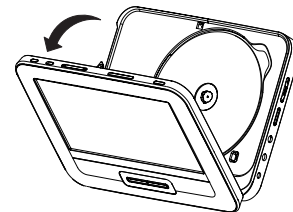
### Connect additional equipment (TV for example)

- 1 Connect the **AV OUT** socket on the main unit to the video and audio sockets on a TV as shown directly.
- 2 Connect the AC adaptor cable to the **DC IN** Jack on the main unit and the power outlet.



- 3 Switch on the TV and set to the correct video-in channel.  
 → You can consult the owner's manual of your TV. (If your TV does not have Audio and Video inputs, you will need to purchase a RF modulator. Please consult your dealer.)

## 2 Enjoy



- 1 Slide the **ON/OFF** switch to **ON** to switch on the main unit.
- 2 Slide **OPEN** ► on the main unit.
- 3 Remove the protective card (if any) and load a disc with the label side facing up.
- 4 Close the disc compartment.  
 → Playback will start automatically. If not, press **HI/OK**.
- 5 To stop playback, press ■.

### Note:

During play, you can:

- Press **OPTION** to select some play options: audio, subtitle, repeat, and time display.
- Press **BRIGHTNESS** on the main unit or rotate **BRIGHTNESS -/+** on the second screen to adjust brightness of screen to match lighting conditions.

