

Always there to help you

Register your product and get support at

www.philips.com/welcome

PD9010

Question?
Contact
Philips



User manual

PHILIPS

Contents

1 Important	3
Safety and notice	3
Safety	3
Compliance	4
Care of the environment	5
Copyright	6
Warranty	7
<hr/>	
2 Your portable DVD player	8
Introduction	8
What's in the box	8
Overview of the main unit	9
<hr/>	
3 Get started	11
Prepare	11
Switch on/off	13
Select OSD language	13
<hr/>	
4 Play music or movies	15
Play discs	15
Connect additional equipment	18
Play from USB	18
<hr/>	
5 Set the main unit	20

1 Important

Safety and notice

Read and understand all instructions before you use this product. If damage is caused by failure to follow the instructions, the warranty does not apply.

Safety

Only use attachments/accessories specified by the manufacturer.

Use only power supplies listed in the user manual.

The product shall not be exposed to dripping or splashing.

Do not place any sources of danger on the product (e.g. liquid filled objects, lighted candles).

Batteries (battery pack or batteries installed) shall not be exposed to excessive heat such as sunshine, fire or the like.

Danger of explosion if battery is incorrectly replaced. Replace only with the same or equivalent type.

Where the plug of the Direct Plug-in Adapter is used as the disconnect device, the disconnect device shall remain readily operable.

Modification of the product could result in hazardous radiation of EMC or other unsafe operation.



Warning

- Never remove the casing of this product.
- Never lubricate any part of this product.
- Never place this product on other electrical equipment.
- Keep this product away from direct sunlight, naked flames or heat.
- Never look into the laser beam inside this product.
- Ensure that you always have easy access to the power cord, plug or adaptor to disconnect the product from the power.
- Where the MAINS plug or an appliance coupler is used as the disconnect device, the disconnect device shall remain readily operable.

Hearing safety



A pleine puissance, l'écoute prolongée du baladeur peut endommager l'oreille de l'utilisateur.



Warning

- To prevent possible hearing damage, do not listen at high volume levels for long periods.

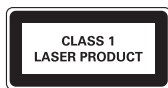
The maximum output voltage of the player is not greater than 150 mV.

Compliance



This product complies with the radio interference requirements of the European Community.

This apparatus includes this label:



Note

- The type plate is located on the bottom of the product.

Care of the environment

Environmental information

All unnecessary packaging has been omitted. We have tried to make the packaging easy to separate into three materials: cardboard (box), polystyrene foam (buffer) and polyethylene (bags, protective foam sheet.)

Your system consists of materials which can be recycled and reused if disassembled by a specialized company. Please observe the local regulations regarding the disposal of packaging materials, and old equipment.



Your product is designed and manufactured with high quality materials and components, which can be recycled and reused.



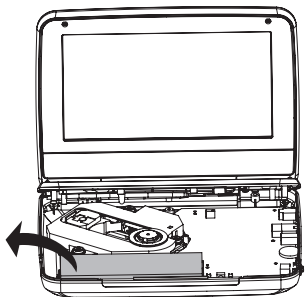
When this crossed-out wheeled bin symbol is attached to a product it means that the product is covered by the European Directive 2002/96/EC.

Please inform yourself about the local separate collection system for electrical and electronic products.

Please act according to your local rules and do not dispose of your old products with your normal household waste. Correct disposal of your old product helps to prevent potential negative consequences for the environment and human health.



Your product contains batteries covered by the European Directive 2006/66/EC, which cannot be disposed with normal household waste. Please inform yourself about the local rules on separate collection of batteries because correct disposal helps to prevent negative consequences for the environmental and human health. Always bring your product to a professional to remove the built-in battery.



Copyright



Be responsible
Respect copyrights

This item incorporates copy protection technology that is protected by U.S. patents and other intellectual property rights of Rovi Corporation. Reverse engineering and disassembly are prohibited.

Specifications are subject to change without notice. Trademarks are the property of Koninklijke Philips Electronics N.V or their respective owners. Philips reserves the right to change products at any time without being obliged to adjust earlier supplies accordingly.



Manufactured under license from Dolby Laboratories.
Dolby and the double-D symbol are trademarks of Dolby Laboratories.



ABOUT DIVX VIDEO: DivX® is a digital video format created by DivX, Inc, a subsidiary of Rovi Corporation. This is an official DivX Certified® device that plays DivX video. Visit divx.com for more information and software tools to convert your files into DivX videos.

ABOUT DIVX VIDEO-ON-DEMAND: This DivX Certified® device must be registered in order to play purchased DivX Video-on-Demand (VOD) movies. To obtain your registration code, locate the DivX VOD section in your device setup menu. Go to vod.divx.com for more information on how to complete your registration.

Warranty

- Never attempt to repair the product, this could lead to the risk of injury, damage to the product and will void your warranty.
- Use the product and accessories only as intended by the manufacturer. The caution sign printed on the back of the product indicates risk of electric shock.
- Never remove the cover of the product. Always contact Philips Customer Support for service or repairs.
- Any operation expressly prohibited in this manual, or any adjustments and assembly procedures not recommended or authorized in this manual shall void the warranty.

2 Your portable DVD player

Congratulations on your purchase, and welcome to Philips! To fully benefit from the support that Philips offers, register your product at www.philips.com/welcome.

Introduction

On this portable DVD player, you can play the following discs (including CD-R, CD-RW, (S)VCD, DVD±R and DVD±RW):

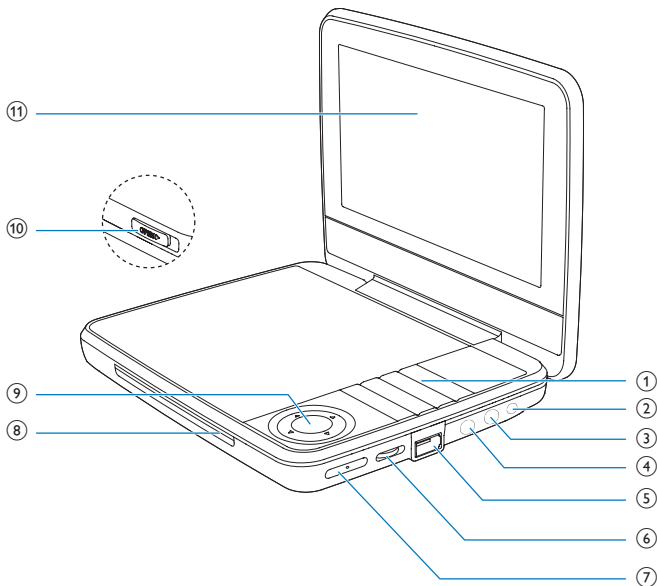
- DVD-Video
 - Video CD
 - Audio CD
 - MP3 CD
 - Divx
 - Discs with JPEG files
-

What's in the box

Check and identify the contents of your package:

- Portable DVD player
- AC power adaptor, AY5808/12 or DSA-9PFB-09 FEU090100
- Car adaptor
- Short user manual
- Safety and warranty sheet

Overview of the main unit



① ①

- Turns on/off DVD player.

SOURCE

- Switches between DISC and USB.

SETUP

- Accesses or exits the setup menu.

OPTIONS

- Accesses options relating to the current activity or selection.
- Accesses or exits the setup menu.

STOP

- Stops play.

DISC MENU

- For DVD, accesses or exits disc menu.
- For VCD, turns on or off PBC (Playback Control) mode.
- For VCD version 2.0 or SVCD with PBC turned on, returns to the menu.



- Skips to the previous or next title, chapter, or track.

② 9-12V DC IN

- Power supply socket.

③ AV OUT

- Audio/video output jack.

④

- Headphone jack.

⑤

- USB socket.

⑥ VOL +/-

- Increases or decreases volume.

⑦ RESET

- When the player hangs up, press it with a ball-point pen or similar tool to reset the player.

⑧ ▲, ▼, ◀, ▶

- Navigates menus.



- Searches backward/forward at different speeds.



- Confirms an entry or selection.
- Starts, pauses or resumes disc play.

⑨ CHR/IR/

- Charging indicator/Remote control sensor/Power indicator.

⑩ OPEN

- Opens the disc compartment.

⑪ Display panel

3 Get started



Caution

- Use the controls only as stated in this user manual.
- Always follow the instructions in this chapter in sequence.

If you contact Philips, you will be asked for the model and serial number of your player. The model number and serial number are on the bottom of your player. Write the numbers here:

Model No. _____

Serial No. _____

Prepare

Charge power

Charge through the AC adaptor



Caution

- Risk of product damage. Ensure that the power supply voltage corresponds to the voltage printed on the bottom of the player.
- Use only the supplied adaptors to charge the battery.

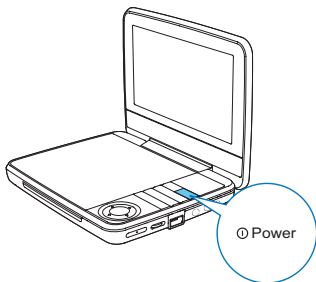


Note

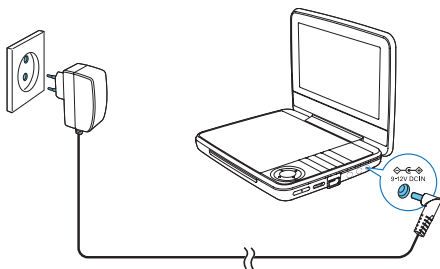
- The type plate is located on the bottom of the player.

To fast charge the battery,

1 press  to switch off the player.



- 2 Connect the supplied AC adaptor to the player and to the AC outlet.



- ↳ The **CHR** indicator turns on (red).
- ↳ When the battery is fully charged, the **CHR** indicator turns off.

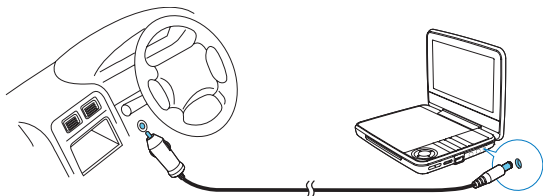


Tip

- You can also charge the battery during play.
- To maximize battery life, recharge the battery immediately once the battery is fully discharged. If you do not use the player for a long time, recharge the battery once every two months.

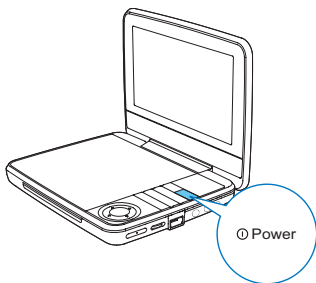
Charge through the car adaptor


Connect the supplied car adaptor to the player and car cigarette lighter.



Switch on/off

- 1 Press  to switch on the player.
↳ The power indicator turns on (green).



- 2 To switch off the player, press .
↳ The power indicator turns off.

Select OSD language

You can choose a different language for the on-screen display text.

- 1 Press **SETUP**.

↳ The setup menu is displayed.

- 2 Go to **[General]** > **[Language]**.
- 3 Press ▲ / ▼ to select a language option.
- 4 Press ► || /OK to confirm.
- 5 Press **SETUP** to exit.

4 Play music or movies

Play discs

- 1 Slide **OPEN** ► on the player.
- 2 Insert the disc with label side facing up.
- 3 Push down to close the disc compartment.
 - ↳ Play starts automatically. If not, press ►||/OK.
 - If a menu is displayed, select an item, then press ►||/OK to start play.
 - To pause, press ►||/OK. Press again to resume play.
 - To stop, press **STOP** twice.
 - To select the previous/next item, press ◀ or ▶.
 - To start search within video/audio, press ◀ or ▶ once or more.

Play options

Select a subtitle language

You can select a subtitle languages on DVDs.

- 1 Press **OPTIONS**.
 - ↳ The option menu is displayed.
- 2 Select **[Subtitles]**, then press ►||/OK.
- 3 Press ▲ / ▼ to select a subtitle.
- 4 Press ►||/OK to confirm.
- 5 Press **OPTIONS** to exit.

Select an audio language

You can select an audio language on DVDs or DivX discs.

- 1 Press **OPTIONS**.
 - ↳ The setup menu is displayed.
- 2 Select **[Audio language]**, then press ►||/OK.
- 3 Press ▲ / ▼ to select a language.
- 4 Press ►||/OK to confirm.

Select an audio mode

When you play VCDs, you can select an audio mode.

- 1 Press **OPTIONS**.
↳ The option menu is displayed.
- 2 Select **[Audio]**, then press **▶||/OK**.
- 3 Press **▲/▼** to select audio channel: **[Stereo]**, **[Left-mono]** or **[Right-mono]**.

Repeat

During play, you can select different repeat options.

- 1 Press **OPTIONS**.
↳ The option menu is displayed.
- 2 Select **[Repeat]** and press **▶||/OK**.
↳ The repeat options are displayed.

For DVD

- **[Repeat A]**: the start of the section to repeat
- **[Repeat B]**: the end of the section to repeat
- **[Repeat Chapter]**: repeat the current chapter
- **[Repeat Title]**: repeat the current title or track
- **[Repeat all]**: repeat all titles on the disc
- **[Repeat Off]**: switch off the repeat mode

For VCD

- **[Repeat A]**: the start of the section to repeat
- **[Repeat B]**: the end of the section to repeat
- **[Repeat 1]**: repeat the current track
- **[Repeat all]**: repeat all tracks on the disc
- **[Repeat Off]**: switch off the repeat mode

For MP3/CD/DivX

- **[Repeat 1]**: repeat the current track
- **[Repeat Folder]**: repeat all the tracks in current folder
- **[Off]**: switch off the repeat mode

- 3 Select an option, then press **▶||/OK** to confirm.



Tip

- You cannot repeat items when PBC is on during VCD/SVCD play.

Random play

You can play all tracks in random order on CDs or MP3 CDs.

- 1 Press **OPTIONS**.
↳ The option menu is displayed.
- 2 Select [**Shuffle All**] and press **▶||/OK**.
- 3 Select [**On**] or [**Off**].
- 4 Press **▶||/OK** to confirm.

Zoom

You can zoom in and out for video images or pictures on DVDs, VCDs, or JPEG CDs.

- 1 Press **OPTIONS**.
↳ The option menu is displayed.
- 2 Select [**Zoom & Pan**] and press **▶||/OK**.
- 3 Press **▶||/OK** repeatedly to zoom in and out.
- 4 When the video image or picture is enlarged, press **▲, ▼, ◀, ▶** to pan through it.

Display play information

You can view the play information during play on DVDs or VCDs.

- 1 Press **OPTIONS**.
↳ The option menu is displayed.
- 2 Select [**Display**] and press **▶||/OK** to confirm.
↳ For DVDs, title number, chapter number and elapsed play time is displayed. For VCDs, track number and elapsed play time is displayed.

Rotate pictures

For JPEG CDs only, While the JPEG is displayed:

- Press **▲** to flip up/down.
- Press **▼** to flip left/right.

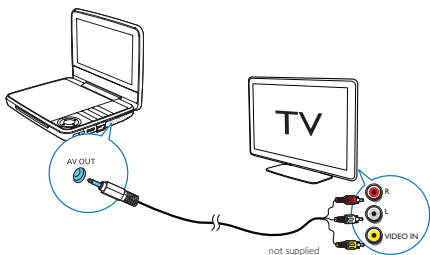
Connect additional equipment

You can connect the player to a TV or an amplifier to enjoy DVDs.



Caution

- Turn off your player before you connect it to any additional equipment.

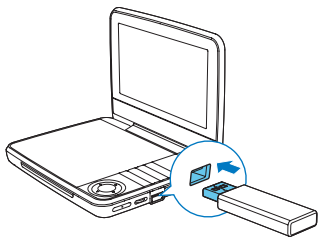


- 1 Connect the AV cable (not supplied) to the **AV OUT** jack of the player.
- 2 Match the color of the AV cables (not supplied) with the jacks on your TV:
 - the yellow cable is for the yellow video jack,
 - the red or white cable is for the red or white audio jacks.

Play from USB

You can play DivX, VOB, MP3, or JPEG files that are stored on a USB storage device.

- 1 Connect the USB device to the player.
 - ↳ The content menu is displayed.



- 2 Press **SOURCE** to switch to USB mode.
- 3 Select a file, then press **▶||**.
↳ Play starts.
- 4 To stop play, press **STOP**.

5 Set the main unit

To maximize your play experience, use **SETUP** to fine tune your settings.

- 1 Press **SETUP**.
↳ The setup menu is displayed.
- 2 Use navigation keys to select an option and press **▶||/OK** to confirm.

[General]	
[Language]	Select on-screen display language
[PBC settings]	Set playback control function on/off.
[Power save]	Set power saving mode.
[DivX (VOD)]	Get DivX registration code.
[DivX subtitles]	Select DivX subtitle language.
[Parental(DVD)]	Select parental options.
[Set password]	Change existing password (3308 by default).
[Factory settings]	Restore factory settings.
[Video]	
[LCD Display]	Set screen display aspect ratio.
[TV standard]	Set video output format to TV system.
[Brightness]	Adjust screen brightness.
[Contrast]	Adjust screen contrast.
[Audio]	
[Dolby]	Set Dolby output.
[Version]	Check the version information.

- 3 Press **◀** to go back to the previous menu.
- 4 Press **SETUP** to exit.

6 Product information



Note

- Product information is subject to change without prior notice.

Dimensions	239 x 39 x 178 mm
Weight	1.1 kg
AC power adaptor	UK: AY5808/05 or DSA-9PFB-09 FEU090100 EU: AY5808/12 or DSA-9PFB-09 FEU090100
Power supply	Input: 100-240V~ 50/60Hz Output: DC 9V $\overline{=}$ 1.0A
Power consumption	11.5 W
Operating temperature range	0-45°C
Laser wavelength	650 nm
Video output	
Format	PAL & NTSC
Output level	1V _{p-p} ± 20%
Load impedance	75 Ω
Audio line out	
Audio out (analog audio)	Output level: 2V ± 10%
Load impedance	10 K Ω
Audio distortion + noise	≤ -80 (1KHz)
Frequency response	20Hz-20KHz ± 1dB
Signal/noise ratio	≥ 80 dB
Channel separation	≥ 80 dB
Dynamic range	≥ 80 dB

Playable media

Disc	DVD, DVD-Video, VCD/SVCD, Audio CD DVD+R/+RW, DVD-R/-RW, DVD+R/-R DL (Dual Layer) CD-R/CD-RW, MP3 media, JPEG files
------	--

File format

Video	.avi, .divx, .mp4, xvid
-------	-------------------------

Audio	.mp3
-------	------

Picture	.jpg, .jpeg
---------	-------------

USB

Compatibility	Hi-Speed USB (2.0)
---------------	--------------------

Class support	USB Mass Storage Class (UMS)
---------------	------------------------------

File system	FAT16, FAT32
-------------	--------------

Support USB HDD (Hard Disc Drive)	an external power source may be needed
-----------------------------------	--

7 Troubleshooting



Warning

- Risk of electric shock. Never remove the casing of the player.

To keep the warranty valid, never try to repair the system yourself.

If you encounter problems when using the player, check the following points before requesting service. If the problem remains unsolved, register your player and get support at www.philips.com/support. When you contact Philips, ensure that your apparatus is nearby and the model number and serial number are available.

No power

- Ensure that both plugs of the mains cord are properly connected.
- Ensure that there is power at the AC outlet.
- Check if the built-in battery is drained.

No sound

- Ensure that the AV cable is connected correctly.

Distorted picture

- Clean the disc. With a clean, soft, lint-free cloth, wipe the disc outwards from the center.
- Make sure that the video output format of the disc is compatible with the TV.
- Change the video output format to match your TV or program.
- The LCD is manufactured using high precision technology. You may, however, see tiny black points and/or bright points (red, blue, green) that continuously appear on the LCD. This is a normal result of the manufacturing process and does not indicate a malfunction.

Cannot play disc

- Ensure the disc label is upwards.
- Clean the disc. With a clean, soft, lint-free cloth, wipe the disc outwards from the center.
- Check if the disc is defective by trying another disc.

No response to the remote control

- Ensure that the path between the remote control and the player is clear from obstacles.
- From a close distance, point the remote control directly at the player.
- Replace the remote control batteries.
- The function does not work for this disc. Refer to the disc instructions.

Not work properly or freeze up

- Press **RESET** with a ball-point pen or similar tool to switch off the player, and press ① to restart.

The player feels warm

- When the player is in use for a long period of time, its surface will be heated. This is normal.

