

USB Hub Setup Guide

(For PHILIPS LCD monitor)



1. About this product

1.1 Package Contents

Each package should include the following parts:

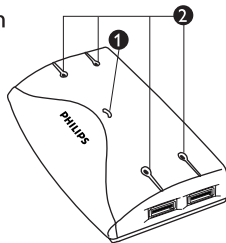
- 1 USB 4-port Clip-On HUB
- 1 USB cable
- 1 Switching AC Adapter
- 1 Owner's manual

1.2 Features

- Fulfill the USB-IF Specification Revision 1.1 and HID Class Definition Rev.1.0
- Support up to 127 USB devices simultaneously.
- Stand-alone or clip-on to Philips monitor range.
- Support for realtime dynamic insertion and removal.
- 1 Upstream port and 4 Downstream ports.
- Over current protection on all downstream ports.
- Self-powered by using the supplied AC Adapter or Bus-powered through USB bus.

1.3 Identification

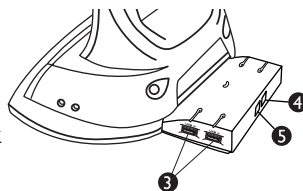
- 1 Power LED: Red light is lit when power is supplied.
- 2 LEDs: Green light is lit for each of the ports when they are connected and active.



- 3 Down Stream Ports: 4 USB A-type receptacles on both sides connect to USB devices.

- 4 Up Stream Port: 1 USB B-type receptacle to connect to the PC.

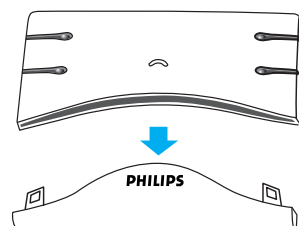
- 5 Power Socket: For the supplied AC Adapter jack to connect to.



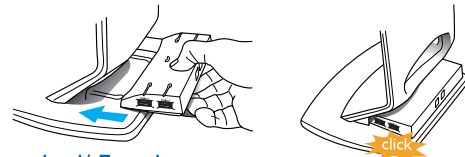
2. Installation

This Hub consists of two parts: functional and aesthetic. The aesthetic element is a removable cover. A slot for this Hub to install in can be found in the back of the LCD monitor base

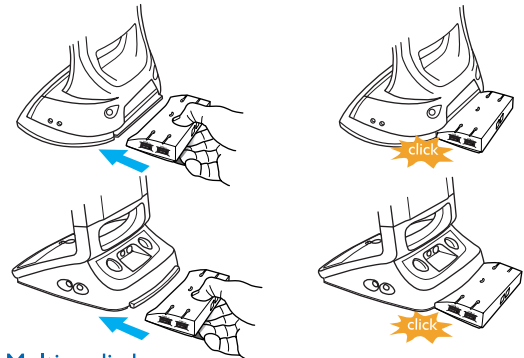
2.1 To remove the cover, simply by pulling it apart from the Hub body.



2.2 Insert the straight into the slot until a click sound is heard



Standard/ Ergo base



Multimedia base

2.3 Power connection

- It is recommended that the AC adapter be plugged into the electrical outlet before the hub.
- It is recommended that the AC adapter is used at all time for high-speed devices and multiple devices may cause a power shortage in the hub.
- It is recommended that the AC adapter be used whenever multiple hubs in a stacking configuration.
- Do not remove the AC adapter while the hubs is working.

2.4 USB connection

- USB devices
This hub can be connected or disconnected to your PC when the computers up and running programs, by using any USB port on your computer.
This product allows your computer to interface with various USB devices.

- A & B type connector

Insert A connector into the down stream port on the PC or this hub.

Insert B connector into the up stream port of this hub or other USB devices.

Make sure that those all the way into the socket and is firmly connected.

2.5 Setup

- When connecting this hub for the first time, a message of "Searching for unknown hardware device, searching software for installation" will appear.
- Your computer will then start up the Device Driver Wizard, and install the hub.
- Once the setup has finished the installation, you can connect USB devices to it.